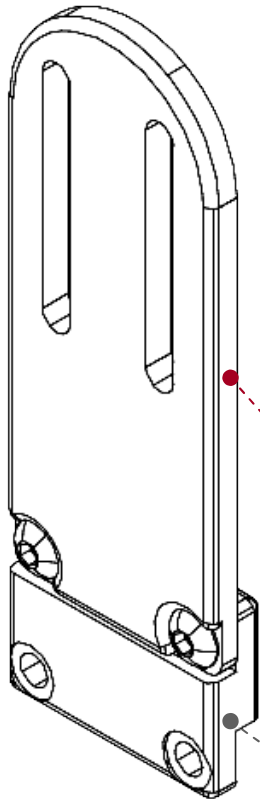


### LT510-L

### Standard Configuration



\*Pad included w/ part # LT510  
Specify Pad Size upon ordering

#### The LT510 Includes:

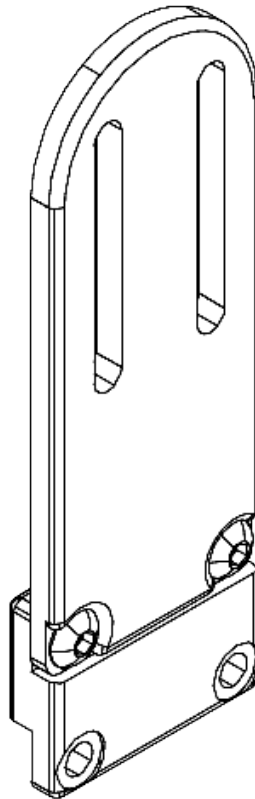
1. Flush Pad Mount
2. 2" Depth Adaptor

#### Pad Mount

5 inch Flush Pad Mount LHW140

**Modifications** - Standard configuration comes with 1" Depth Adaptor LHW120

### LT510-R



### LT510

The LT510 is a versatile fixed thoracic lateral bracket that is designed to be fully modular to accommodate the needs of almost any client. The standard configuration comes with a 3 inch flush pad mount, 2 inch height adaptor and a standard 4 inch "L" Bracket for mounting to a planar back. A variety of different sized pad mounts, offsets, mounting hardware and adjustable modifications are available to get any configuration you need.

#### TECHNICAL DATA

1. 5/32 tool for 1/4- 20 button head screws.(Pad Mounts, Mounting Hardware, Mods)

#### SELLING POINTS

1. Heavy duty fixed hardware is sturdy and reliable.
2. Smooth finished edging on every piece.
3. Fully modular to accommodate the needs of almost any client.

#### STANDARD CONFIGURATION DIMENSIONS

##### Profile View

<b>Pad Mount</b>	<b>5"</b>
<b>Standard Mod Height Adaptor</b>	<b>1"</b>

Use these standard dimensions to determine which modifications you will need. See back for height adaptors, offsets or alternate pad mounts

<b>7" Flush Pad Mount</b>	<b>LHW-142</b>
<b>6" Flush Pad Mount</b>	<b>LHW-141</b>
<b>5" Flush Pad Mount</b>	<b>LHW-140</b>
<b>3" Flush Pad Mount</b>	<b>LHW-139</b>

<b>1" Offset Adaptor</b>	<b>LHW-121</b>
<b>2" Offset Adaptor</b>	<b>LHW-123</b>
<b>1" Depth Adaptor</b>	<b>LHW-120</b>
<b>2" Depth Adaptor</b>	<b>LHW-122</b>
<b>3" Depth Adaptor</b>	<b>LHW-124</b>

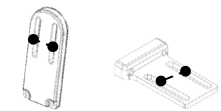
**Pad Mount** - 3 inch Flush Pad Mount - LHW-139

<b>2GTR Track Nut</b>	<b>LTHW503</b>
<b>Standard Track Mount</b>	<b>LTHW515</b>
<b>All Season Bracket</b>	<b>LTHW504</b>
<b>Planar Mount</b>	<b>LTHW505</b>

- Invacare TDx System
- Standard modular track mounting
- Width Adjustable Planar Mount
- Standard for mounting to flat backs

#### Modifications

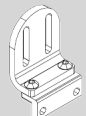
1" Depth Adaptor LHW120



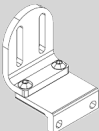
Standard pad mounts and "L" brackets have 1" slot spacing.

## Offsets

Offsets can be added to accommodate hip width for growth in the seat.

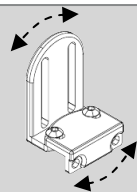


**1" Offset Adaptor** – LHW-121



**2" Offset Adaptor** – LHW-123

## 20° Adjustable Pad Mount



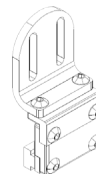
Add the 20° Adjustable pad mount for lateral angle adjustment. Generally used to accommodate clients whose legs are windswept.

**20° Adjustable Pad Mount** – LPHW-406

## Example Configuration

### **LT510**

This example configuration is shown with a 1 inch offset, 1 inch depth adaptor, and a track nut for mounting hardware.



## Retrofitted Mounting Hardware

A variety of mounting hardware has been retrofitted to other manufacturer's chairs



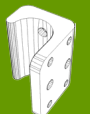
**Tru Comfort Back Mount** – LTHW508

Can be used with the Quantum Tru-Comfort Back



**Formula Contour Bracket** – LTHW507

Can be used with the Invacare Formula Seating



**Pride Synergy Cane Clamp** – LTHW506

Can be used with the Pride Synergy Seating



**Permobil Corpus Tracks**

**Left Side** – LTHW518

**Right Side** – LTHW520

Can be used with the Permobil Corpus Seating

## Mounting Hardware

### Tracks

**2" Track** – SBHD-234

**3" Track** – SBHD-235

**6" Track** – SBHD-233

**7" Track** – SBHD231

**8" Track** – SBHD-236

**10" Track** – SBHD-140

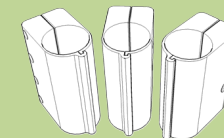
**12" Track** – SBHD-232

**14" Track** – SBHD-237

**16" Track** – SBHD-238

**18" Track** – SBHD-239

### Cane Mount Clamps



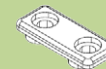
**1"** – LTHW500

**3/4"** – LTHW501

**7/8"** – LTHW502

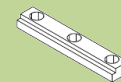
**Anti Rotation Nuts** – LHW-145

Used for mounting hardware or pad mounting to prevent rotation in the slots.

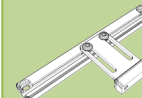


**2GTR Nut** – LTHW503

Can be used with the Invacare TDX system and Motion Concepts Backs

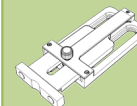


**Planar Mount w/ Track** – LTHW515



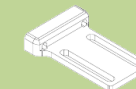
**All Season Bracket** – LTHW504

Width adjustable planar mount for flat backs, for curved backs use part number – LTHW509



**Planar Mount** – LTHW505

Standard for mounting to flat backs, for curved backs Use part number – LTHW510



## Height Adaptors

Height adaptors can be used in conjunction with offsets to achieve the height needed for cushion thickness.



**1" Depth Adaptor** – LHW-120



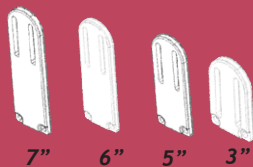
**2" Depth Adaptor** – LHW-122



**3" Depth Adaptor** – LHW-124

## Flush Pad Mounts

If an offset is not needed, then different sized flush pad mounts can be added in order to achieve the right height for cushion thickness.



**3" Flush Pad Mount** – LHW-139

**5" Flush Pad Mount** – LHW-140

**6" Flush Pad Mount** – LHW-141

**7" Flush Pad Mount** – LHW-142