

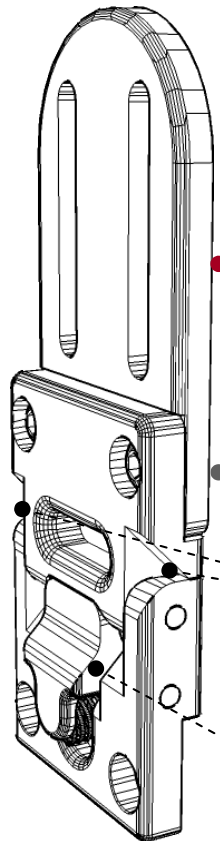
### LT520-L

\*Pad not included w/ part # LT520

### Standard Configuration

The LT520 Includes:

1. Flush Pad Mount
2. Modular Swing Away Mechanism



#### Pad Mount

3 inch Flush Pad Mount LHW-139

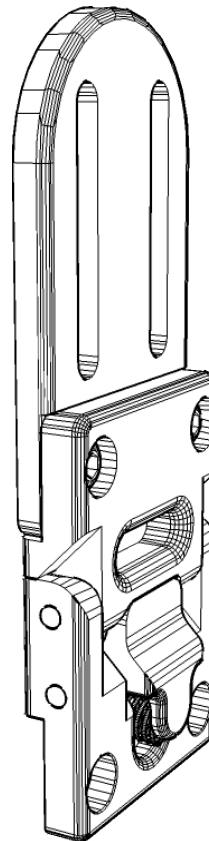
**Modifications** - Standard configuration comes with no mods.

#### Set Screw Adjustment

Adjust set screws to prevent movement (play) in the hardware

#### Quick Release Button

### LT520-R



### LT520

The LT520 is an extremely versatile swing away thoracic lateral bracket that is designed to be fully modular to accommodate the needs of almost any client. The standard configuration comes with a 3 inch flush pad mount, quick release swing away mechanism and a standard 4 inch "L" Bracket for mounting to the seat pan. A variety of different sized pad mounts, offsets, mounting hardware and adjustable modifications are available to get any configuration you need.

### TECHNICAL DATA

1. 5/32 tool for 1/4- 20 button head screws. (Pad Mounts, Mounting Hardware, Mods)

### SELLING POINTS

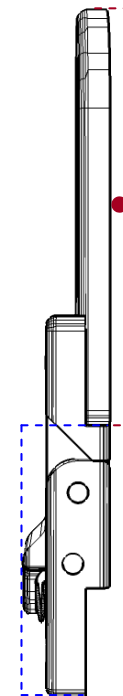
1. Push button quick-release swing-away mechanism to easily transfer client from chair.
2. Smooth finished edging on every piece.
3. Fully modular to accommodate the needs of almost any client.

### STANDARD CONFIGURATION DIMENSIONS

#### Profile View

|                             |               |
|-----------------------------|---------------|
| <b>Pad Mount</b>            | <b>3"</b>     |
| <b>Swing Away Mechanism</b> | <b>2.125"</b> |

Use these standard dimensions to determine which modifications you will need. See back for height adaptors, offsets or alternate pad mounts



|                    |         |
|--------------------|---------|
| 7" Flush Pad Mount | LHW-142 |
| 6" Flush Pad Mount | LHW-141 |
| 5" Flush Pad Mount | LHW-140 |
| 3" Flush Pad Mount | LHW-139 |

#### Pad Mount

3" inch Flush Pad Mount - LHW-139

|                   |         |
|-------------------|---------|
| 1" Offset Adaptor | LHW-121 |
| 2" Offset Adaptor | LHW-123 |
| 1" Depth Adaptor  | LHW-120 |
| 2" Depth Adaptor  | LHW-122 |
| 3" Depth Adaptor  | LHW-124 |

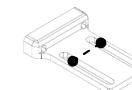
|                       |          |
|-----------------------|----------|
| 2GTR Track Nut        | LTHW503  |
| Planar Mount w/ Track | LTHW515  |
| All Season Bracket    | LTHW504  |
| Planar Mount          | LTHW-505 |

Invacare TDX System

Standard Track Mount for flat backs

Width adjustable planar mount

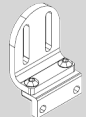
Standard for mounting to flat backs



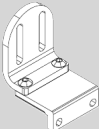
Standard pad mounts and mounting hardware have 1" slot spacing

## Offsets

Offsets can be added to accommodate hip width for growth in the seat.

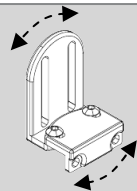


**1" Offset Adaptor** – LHW-121



**2" Offset Adaptor** – LHW-123

## 20° Adjustable Pad Mount



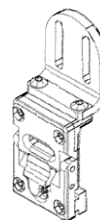
Add the 20° Adjustable pad mount for lateral angle adjustment. Generally used to accommodate clients whose legs are windswept.

**20° Adjustable Pad Mount** – LPHW-406

## Example Configuration

### LP420

This example configurations is shown with a 1 inch offset and a track nut for mounting hardware.



## Retrofitted Mounting

A variety of mounting hardware has been retrofitted to other manufacturer's chairs



**Tru Comfort Back Mount** – LTHW508

Can be used with the Quantum Tru-Comfort Back  
**8" Tapered Tru Comfort Track Only** – LTHW516



**Formula Contour Bracket** – LTHW507

Can be used with the Invacare Formula Seating



**Pride Synergy Cane Clamp** – LTHW506

Can be used with the Pride Synergy Seating



**Permobil Corpus Tracks**

**Left Side** – LTHW518

**Right Side** – LTHW520

Can be used with the Permobil Corpus Seating

## Mounting Hardware

### Tracks

**2" Track** – SBHD-234

**3" Track** – SBHD-235

**6" Track** – SBHD-233

**7" Track** – SBHD231

**8" Track** – SBHD-236

**10" Track** – SBHD-140

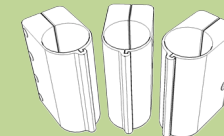
**12" Track** – SBHD-232

**14" Track** – SBHD-237

**16" Track** – SBHD-238

**18" Track** – SBHD-239

### Cane Mount Clamps



**1" – LTHW500**

**3/4" – LTHW501**

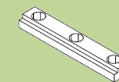
**7/8" – LTHW502**

### Anti Rotation Nuts – LHW-145



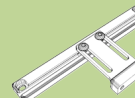
Used for mounting hardware or pad mounting to prevent rotation in the slots.

### 2GTR Nut – LTHW503

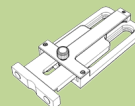


Can be used with the Invacare TDX system and Motion Concepts Backs

### Planar Mount w/ Track – LTHW515

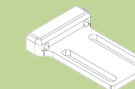


### All Season Bracket – LTHW504



Width adjustable planar mount for flat backs, for curved backs use part number – LTHW509

### Planar Mount – LTHW505



Standard for mounting to flat backs, for curved backs Use part number – LTHW510

## Height Adaptors

Height adaptors can be used in conjunction with offsets to achieve the height needed for cushion thickness.



**1" Depth Adaptor** – LHW-120



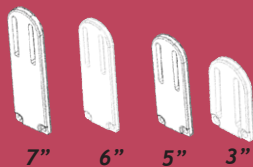
**2" Depth Adaptor** – LHW-122



**3" Depth Adaptor** – LHW-124

## Flush Pad Mounts

If an offset is not needed, then different sized flush pad mounts can be added in order to achieve the right height for cushion thickness.



**3" Flush Pad Mount** – LHW-139

**5" Flush Pad Mount** – LHW-140

**6" Flush Pad Mount** – LHW-141

**7" Flush Pad Mount** – LHW-142