



Installation Manual



Swing Away Hardware

Installation Instructions for Comfort Plus Swing-Away
Facial Lateral Support Hardware for Permobil

Stealth Products strives for 100% customer satisfaction. Your complete satisfaction is important. Please contact us with feedback or suggested changes that will help improve the quality and usability of these products. You may reach us at:



Stealth Products, LLC
104 John Kelly Drive, Burnet, TX 78611
Phone: (512) 715-9995 Toll Free: 1(800) 965-9229
Fax: (512) 715-9954 Toll Free: 1(800) 806-1225
info@stealthproducts.com www.stealthproducts.com



MDSS GmbH
Schiffgraben 41
30175 Hannover, Germany



Installation Date: _____

Dealer: _____

Dealer Stamp:

Serial Number:

Warning Labels

2.1

Warnings are included for the safety of the user, client, operator and property. Please read and understand what the signal words **SAFETY**, **NOTICE**, **CAUTION**, **WARNING** and **DANGER** mean, how they could affect the user, those around the user, and property.

⚠ DANGER	Identifies an imminent situation which (if not avoided) will result in severe injury, death, and property damage .
⚠ WARNING	Identifies a potential situation which (if not avoided) will result in severe injury, death, and property damage .
⚠ CAUTION	Identifies a potential situation which (if not avoided) will result in minor to moderate injury, and property damage .
NOTICE	Identifies important information not related to injury, but possible property damage .
SAFETY	Indicates steps or instructions for safe practices, reminders of safe procedures, or important safety equipment that may be necessary.

Limited Liability

2.2

Stealth Products, LLC accepts no liability for personal injury or damage to property that may arise from the failure of the user or other persons to follow the recommendations, warnings, and instructions in this manual.

Testing

2.3

Initial setup and driving should be done in an open area free of obstacles until the user is fully capable of driving safely.

The hardware should always be tested without any person sitting in the wheelchair until every alteration or adjustment is complete.

1.0 Customer Satisfaction	i
2.0 Warning Labels	ii
2.1 Warning Labels	ii
2.2 Limited Liability	ii
2.3 Testing	ii
3.0 Table of Contents	iii
4.0 Installation Instructions	1
4.1 Egg Switch Mounting.....	1
4.2 Facial Pad Mounting.....	1
4.3 Lateral Rod Mounting.....	2
4.4 Mounting Swing-Away to Headrest.....	2
5.0 Warranty	5
5.1 In Case of Product Failure	5
6.0 Maintenance	6
6.1 Cleaning	6
6.2 Disinfecting	6

Egg Switch Mounting

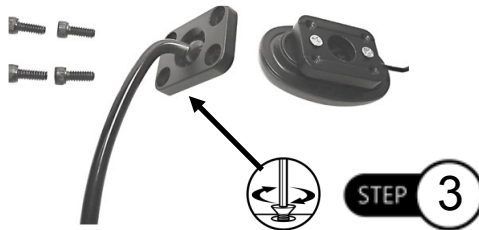
4.1

Step 1: Place the wire in the inset groove on the back of the egg switch.

Step 2: With a Phillips head screwdriver, tighten the screws into the adjacent holes shown.



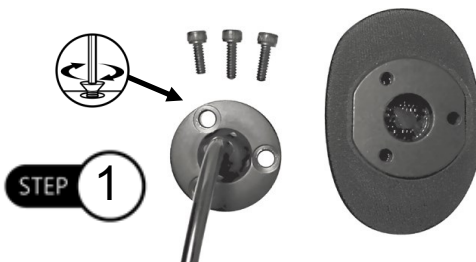
Step 3: After the mount is fastened, place the lateral rod into the 4-hole ring. With a 5/32" hex tool, fasten the four screws into the adjacent holes. The ball should be between the egg switch mount and 4-hole ring.



Facial Pad Mounting

4.2

Step 1: With a 5/32" hex tool, tighten the screws into the adjacent holes on the 3-hole ring and pad, making sure that ball end is between the two.

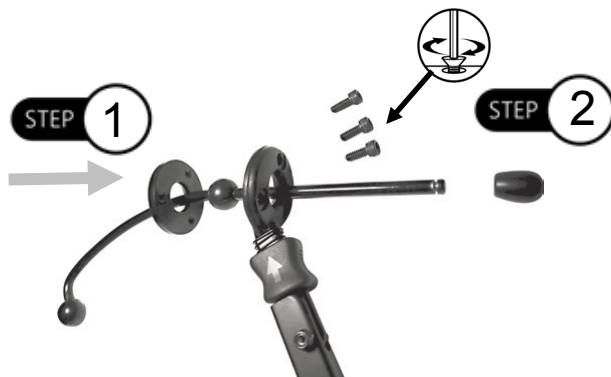


Lateral Rod Mounting

4.3

Step 1: Slide end of the lateral through the ring, split ball, and the swing-away ring.

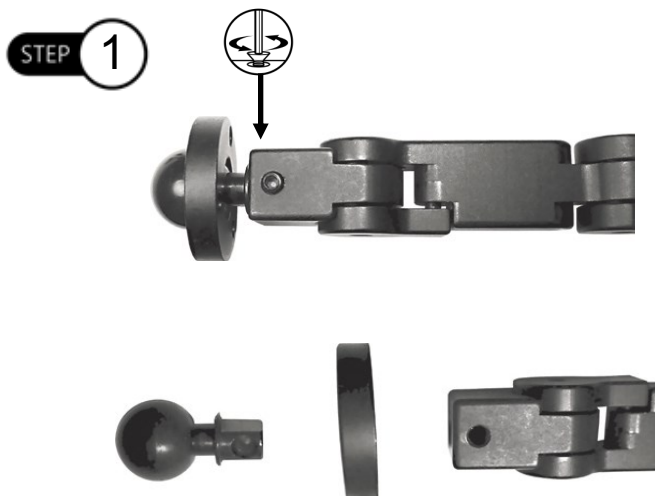
Step 2: With a 5/32" hex tool fasten the rings around the split ball.



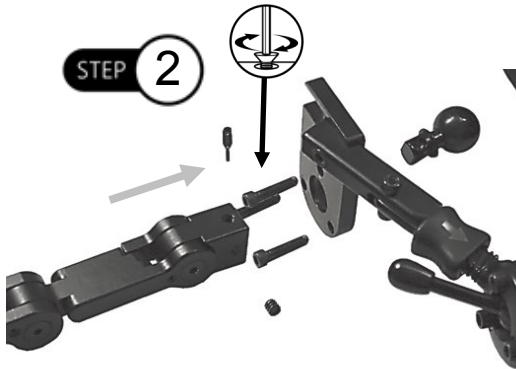
Mounting Swing-Away to Headrest

4.4

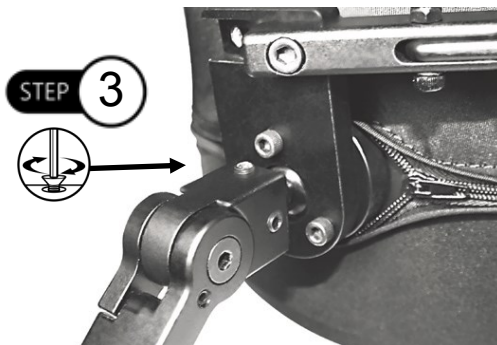
Step 1: To mount the CPS9 to a headrest system, use a 1/8" hex tool remove the screw on top of the hardware shown and loosen the set screw on the side.



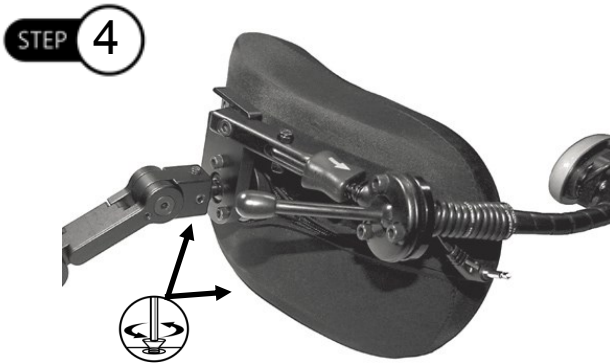
Step 2: Replace the CP 3-hole ring with the CPS9, placing it between the ball and ball receiver. Replace and tighten the tapered screw and set screw.



Step 3: After the CPS9 Ring is mounted to the hardware, with a 5/32" hex tool fasten the socket head screws into the adjacent holes on the CPS9 and Comfort Plus Headrest.



Step 4: When hardware is secure, adjust the headrest and swing-away hardware to desired position. Loosen the rings holding the pad/switch, lateral rod or headrest with the 5/32" hex tool, allowing for free adjustment of the hardware. When in desired position tighten the screws.



Step 5: The product is ready for use! Ensure the hardware you are using stays in working order, periodically check hardware and pads for damage.



Our products are designed, manufactured, and produced to the highest of standards. If any defect in material or workmanship is found, Stealth Products will repair or replace the product at our discretion. Any implied warranty, including the implied warranties of merchantability and fitness for a particular purpose, shall not extend beyond the duration of this warranty. Stealth Products, LLC does not warrant damage due to, but not limited to:

- Misuse, abuse, or misapplication of products.
- Modification of product without written approval from Stealth Products, LLC.
- Any alteration or lack of serial number, where applicable, will automatically void this warranty.
- Stealth Products, LLC is liable for replacement parts only.
- Stealth Products, LLC is not liable for any incurred labor costs.

No person is authorized to alter, extend, or waive the warranties of Stealth Products, LLC.

Stealth Products warrants against failure due to defective materials or workmanship:

Covers: 2 years

Hardware: 5 years

Electronics: 3 years

In Case of Product Failure

5.1

In the even of product failure covered by our warranty, please follow the procedures outlined below:

1. Call Stealth at +1 (512) 715-9995 or toll free +1-800-965-9229.
2. Request the Returns Department or obtain an RA from the Returns Department and follow department or documentation instructions.

We recommend that all products be checked for wear and function on a periodic basis and repaired, if necessary, by a wheelchair professional.

- Repairs should be performed with Stealth parts or fasteners or items appropriate for the service needed.
- Discontinue use after identifying loose or broken components.
- Check and retighten all fasteners according to the installation instructions.
- If you must lubricate a moving part or hinge do so sparingly using only a product approved for the situation.

Cleaning

6.1

- Positioning accessories can be wiped clean with a damp cloth and mild nonabrasive cleaner.
- Ensure all cleaners are approved for finished steel, aluminum, plastic and upholstered surfaces.
- Do not immerse in water or rinse with a water hose.
- Do not coat the metal surface with waxes or silicones.

Disinfecting

6.2

- When needed, surfaces can be wiped with an approved disinfecting product.
- Ensure the disinfectant is approved for finished steel, aluminum, plastic and upholstered surfaces.
- Covers: follow the fabric care labels affixed to the product.
- Fixed Covers: Take care to notice the cover's fit to the pad so it can be refitted in the correct orientation.
- Zip the cover closed to avoid catching. Wash in warm water (40°C/104°F) by hand or gentle machine cycle and drip or tumble dry on low heat.
- Some covers consist of different materials for the sides and contact surfaces. For these combinations take care to wipe clean only.

CAUTION

Do not treat any seating or positioning surfaces with silicones, waxes or preservatives meant for leather or vinyl. They will make the surface slippery and defeat the positioning functions of the product.



Stealth Products, LLC. • info@stealthproducts.com • www.stealthproducts.com
+1(800) 965-9229 | +1(512) 715-9995 | 104 John Kelly Drive, Burnet TX 78611