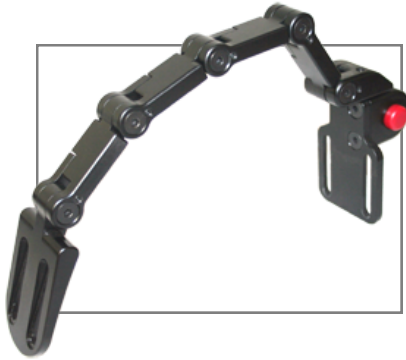
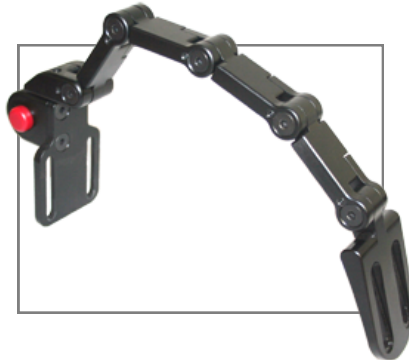


TECHNICAL DATA



TWBSHR-R

Right Side Swing away Shoulder Retractor



TWBSHR-L

Left Side Swing away Shoulder Retractor

TWBSHR-R includes:

- TWB Link Assemblies
- Standard Pad Mount
- Quick Release Mount

TWBSHR-L includes:

- TWB Link Assemblies
- Standard Pad Mount
- Quick Release Mount

SHOULDER RETRACTOR PADS



TWBSHR-3x3

TWBL 3" x 3" Lateral Pad
For Shoulder Retractor.

TWBSHR-3x5

TWBL 3" x 5" Lateral Pad
For Shoulder Retractor.

SHRMD100

Custom Lateral Pad
For Shoulder Retractor.

PRODUCT DESCRIPTION

The TWB Shoulder Retractors were intuitively designed with out "TWB Linking" hardware to provide more strength, versatility, adjustability, and sleek visuals. We also incorporated our quick release button to allow the shoulder retractors to swing-away during patient transfers.

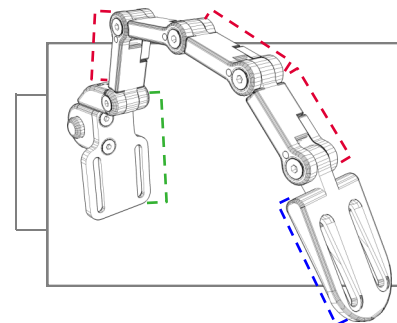
TECHNICAL DATA

- 5/32 tool for 1/4-20 button head screws (Links).
- 3/16 tool for 1/4-20 socket head screws (Mounting Hardware).
- Set screw adjustment in links and swing away arm.

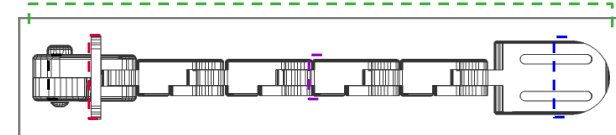
SELLING POINTS

- Push button quick release swing-away allows for easy and simple user transfer.
- Adjustable links allows for full adjustability to accommodate any client.
- Modifications like the full surface contact and additional links can be purchased to provide an even better adjustable positioning.

DIMENSIONS



TWB Adjustable Link Length	3"
Pad Mount Length	3 1/2"
Chair Mount Length	4"

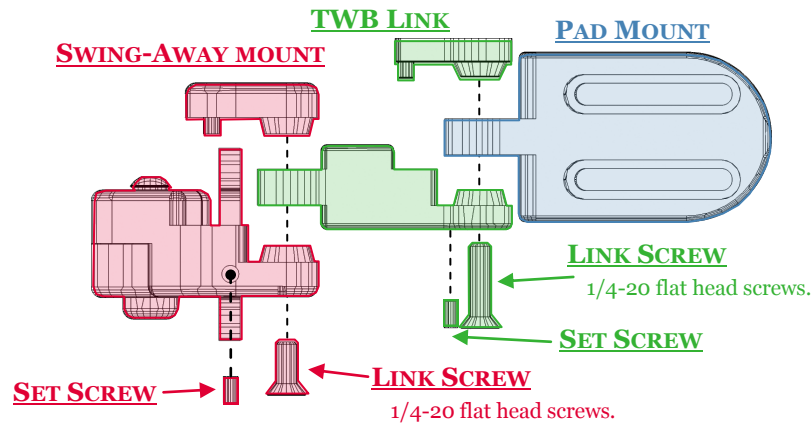


Total Hardware Length	15"
Swing-Away Mechanism Width	1 1/4"
TWB Link Width	1"
Chair Mount Width	2 1/4"
Pad mount Width	2"

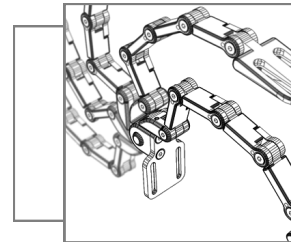
TECHNICAL DATA

More information available at www.stealthproducts.com

ASSEMBLY*

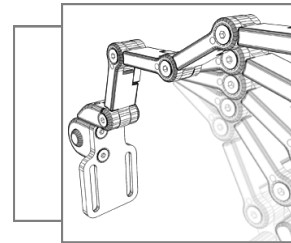


*Image only shows assembly of one link. Stealth's shoulder retractor has a total of four of these links.



SWING-AWAY

Made for easy transfers, the Swing-Away mechanism flips 180° out of the way with an easy push of a button. Located on the Swing-Away mechanism is a set screw that ensures a snug fit while the hardware is in position.



LINK ADJUSTMENT

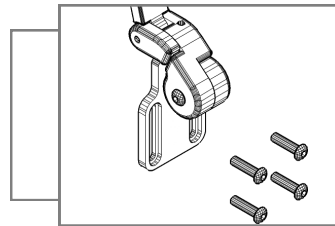
Links are extremely versatile hardware that are adjustable to provide excellent support and positioning. Screws connect the links at the joints and allow for adjustment. Loosening the screws allows the links to be adjusted and tightening them makes the links rigid.

MOUNTING



MOUNTING TO CHAIR'S BACK

The TWBSRH can be directly mounted to a back base. Stealth's back bases include t-nuts with proper spacing to easily mount any of Stealth's hardware. There are many other ways these can be mounted.



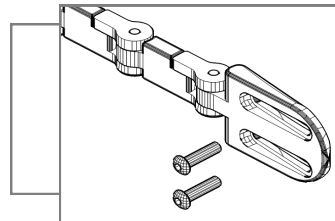
HARDWARE MOUNTING

On a standard Stealth back and hardware mount, the square screw pattern has a spacing of 1 1/2" between each screw. Keep the spacing in mind if you are to mount the hardware to a non-Stealth back base. Two screws can be used instead of four and it's required for tracks.



MOUNTING TO A TRACK

Pictured to the left is a 2" Track. With tracks you have a little more control on the positioning of the hardware as well as an easier way to remove the hardware. Go to our website to see all tracks.



PAD MOUNTING

When using a stealth pad, holes and t-nuts are already provided in the pad's base. All you need to do is position the pad mount on the pad and tighten it to the base till it's rigid. For more adjustability, go on our website or ask us about our Full Surface Contact Feature!