

Stealth Products[®]

Alternative Drive Controls



OWNERS MANUAL



Hand Warmer

Stealth's mo-Vis Series Adjustable Heating Device



Stealth Products strives for 100% customer satisfaction. Your complete satisfaction is important. Please contact us with feedback or suggested changes that will help improve the quality and usability of our products. You may reach us at:



Stealth Products, LLC

104 John Kelly Drive, Burnet, TX 78611

Phone: (512) 715-9995

Toll Free: 1(800) 965-9229

Fax: (512) 715-9954

Toll Free: 1(800) 806-1225

info@stealthproducts.com

www.stealthproducts.com



MDSS GmbH

Schiffgraben 41

30175 Hannover, Germany



General

Read and understand all instructions prior to the use of the product. Failure to adhere to instructions and warnings in this document may result in property damage, injury, or death. Product misuse due to failure of the following instructions will void the warranty.

Immediately discontinue use if any function is compromised, parts are missing, loose, or shows signs of excessive wear. Consult with your supplier for repair, adjustment, or replacement.

Important Information!

All persons responsible for fitting, adjustment, and daily use of the devices discussed in these instructions must be familiar with and understand all safety aspects of the devices mentioned. In order for our products to be used successfully, you must:

- Read and understand all instructions and warnings.
- Maintain our products according to our instructions on care and maintenance.
- Devices should be installed and adjusted by a trained technician.

Supplier Reference

Supplier: _____

Telephone: _____

Address: _____

Purchase Date: _____

Model: _____

Before you install or begin using this product, it is important that you read and understand the content of these installation and operating instructions.

The installation instructions will guide you as an installer through the options and possibilities with the mo-Vis product. The mo-Vis product should be adjusted with the mo-Vis Configurator Software.

Instructions are written with the expressed intent of use with standard configurations. They also contain important safety and maintenance information, as well as describe possible problems that can arise during use. For further assistance, or more advanced applications, please contact your supplier or Stealth Products (512) 715-9995 or toll free at 1-800-965-9229.

Always keep the operating instructions in a safe place so they may be referenced as necessary.

All information, pictures, illustrations and specifications are based on the product information that was available at the time of printing. Pictures and illustrations shown in these instructions are representative examples and are not intended to be exact depictions of the various parts of the product.

Ordering Documentation

You can download additional copies of this user manual on the Stealth website:

<https://stlpro.site/stealth-docs>

and search: *mo-Vis Hand Warmer Owners Manual* in the search bar at the top of the page.

Our products are designed, manufactured, and produced to the highest of standards. If any defect in material or workmanship is found, Stealth Products will repair or replace the product at our discretion. Any implied warranty, including the implied warranties of merchantability and fitness for a particular purpose, shall not extend beyond the duration of this warranty. Stealth Products, LLC does not warrant damage due to, but not limited to:

- Misuse, abuse, or misapplication of products.
- Modification of product without written approval from Stealth Products, LLC.
- Any alteration or lack of serial number, where applicable, will automatically void this warranty.
- Stealth Products, LLC is liable for replacement parts only.
- Stealth Products, LLC is not liable for any incurred labor costs.

No person is authorized to alter, extend, or waive the warranties of Stealth Products, LLC.

Stealth Products warrants against failure due to defective materials or workmanship:

Covers: 2 years

Hardware: 5 years

Electronics: 3 years

In Case of Product Failure

In the event of product failure covered by our warranty, please follow the procedures outlined below:

1. Call Stealth Products at +1 (512) 715-9995 or toll free at +1 (800) 965-9229.
2. Request the Returns Department or obtain a Return Authorization (RA) from the Returns Department and follow department documentation instructions.

1.0 Customer Satisfaction	i
2.0 Important Information.....	ii
3.0 Introduction	iii
4.0 Warranty	iv
5.0 Table of Contents.....	v
6.0 Warning Labels.....	viii
6.1 Warning Labels.....	viii
6.2 Limited Liability	viii
6.3 Testing.....	viii
7.0 Safety Precautions	ix
8.0 Design and Function.....	1
8.1 Intended Use.....	1
8.2 Features.....	1
8.3 Mounting.....	1
9.0 Parts and Accessories	2
9.1 Hand Warmer Set.....	2
9.2 Hand Warmer Accessory	3
10.0 Installation Instructions	4
10.1 Preparations.....	4
10.2 Tools	4
10.3 Installation Plan	4
11.0 Hand Warmer Installation	5
11.1 Installation	5
11.2 Connection	5

12.0 Functioning	6
12.1 Operation and Level Selection	6
12.2 Parameter Configuration	6
12.3 Automatic Error Detection	6
13.0 Configuration Software	7
13.1 Software Capabilities	7
13.2 Software Download	7
14.0 Testing	12
14.1 Check that the Hand Warmer	12
14.2 Operational Test	12
14.3 Test Drive	12
15.0 Adjustments	13
15.1 User Adjustments	13
16.0 Troubleshooting	14
17.0 Error Codes	15
18.0 Settings	17
18.1 Parameter Settings	17
19.0 First Time Use	18
19.1 Dealer Assistance	18
19.2 User Testing	18
19.3 Conditions of Use	18
20.0 Maintenance	19
20.1 Cleaning	19
20.2 Monthly Check	19
20.3 Hand Warmer Maintenance	19

21.0 Technical Data	20
21.1 Product Description and Code	20
21.2 Dimensions.....	20
21.3 Voltage Supply.....	20
21.4 Current Supply.....	21
21.5 Power Consumption	21
21.6 Cable Length.....	21
21.7 XLR Connector	21
21.8 Weight.....	21
21.9 Heater Temperature Shutdown	21
21.1.0 EMC Requirements	22
22.0 Notes.....	23

Warning Labels

6.1

Warnings are included for the safety of the user, client, operator and property. Please read and understand what the signal words **SAFETY, NOTICE, CAUTION, WARNING** and **DANGER** mean, how they could affect the user, those around the user, and property.

DANGER

Identifies an **imminent** situation which (if not avoided) will result in **severe injury, death, and property damage**.

WARNING

Identifies an **potential** situation which (if not avoided) will result in **severe injury, death, and property damage**.

CAUTION

Identifies an **potential** situation which (if not avoided) will result in **minor to moderate injury, and property damage**.

NOTICE

Identifies important information not related to injury, but possible **property damage**.

SAFETY

Indicates steps or instructions for safe practices, reminders of safe procedures, or important safety equipment that may be necessary.

Limited Liability

6.2

Stealth Products, LLC accepts no liability for personal injury or damage to property that may arise from the failure of the user or other persons to follow the recommendations, warnings, and instructions in this manual.

Stealth Products does not hold responsibility for final integration of final assembly of product to end user. Stealth Products is not liable for user death or injury.

Testing

6.3

Initial setup and driving with the new accessory installed should be done in an open area free of obstacles until the user is fully capable of driving safely.

- The Hand Warmer is intended to be fitted on any power wheelchair with 24V connection.
- Incorrect use or installation may lead to risk of injury to the user and damage to the wheelchair or other property.
- In order to reduce these risks, you should carefully read this manual, paying attention to the safety instructions and warnings.
- Any unauthorized use of the product may lead to increased risk of accident. Carefully follow the recommendations in this manual in order to prevent accidents from use.
- The Hand Warmer unit is a non-serviceable part.
- Always contact your dealer or service technician for questions concerning the operation or adjustment of the Hand Warmer.

 **CAUTION**

At full power the Hand Warmer will produce warm air (up to 70°C/158°F), it is advised to leave a minimum distance between the hand and the warmer of 100mm (4in).

 **CAUTION**

The Hand Warmer's air inlet and outlet are both at the front. Leave at least a distance of minimal 50mm (2in) between the front of the Hand Warmer and any object.

 **WARNING**

The Hand Warmer has an open structure at the front. Mount the Hand Warmer in a way that water cannot enter into the interface. Some drops of water will not cause problems, however excess water must be avoided.

 **WARNING**

The XLR connector is internally fused with a fuse of 5A. This is necessary because the wire gauge cannot carry more current. The XLR connector should not be cut in order to make a connection directly to the wheelchair batteries unless a fuse of 5A is added.

- The Hand Warmer continuously measures the temperature and supply voltage. When a fault is detected the device will switch itself off. If there is an undetected fault, the interface contains an additional internal fast blow fuse of 4A and a PTC fuse of 3A.

Intended Use

8.1

The mo-Vis hand warmer improves flexibility of cold body parts. The hand warmers main functionality is to keep the area around a wheelchairs input device warm. This increases the comfort of the user and their ability to control the input device .

Features

8.2

The Hand Warmer is:

- An air heater powered by the wheelchair battery power (24V).
- Contains its own control electronics.
- Air is drawn at the front, heated, and forced out again at the front using an internal fan.
- The air inlet and outlet are at the same side, therefore warm air is recycled instead of using air from the cold environment.
- Easily adjustable with the mo-Vis Configurator Software.
- Temperatures can be adjusted, with a minimum temperature of 104°F (40°C) and a maximum temperature of 122°F (50°C).

Mounting

8.3

The Hand Warmer can be mounted at any location on the wheelchair.

- Use the included rod, clamp, and bolt.
- On a flat surface.
- The optional dome (IDM-DOME) can be mounted with the provided Velcro to a flat surface.

Hand Warmer Set

9.1

The Hand Warmer Set consists of the following parts:



Product Description	Product Code
Hand Warmer Set	IDM-HW
Hand Warmer Unit	
Hand Warmer Extension Lead 180cm	
Hand Warmer Mounting Set: <ul style="list-style-type: none"> • Quick-to-Mount Half Clamp 6mm in Diameter, 14mm long • Quick-to-Mount Rod 6mm in Diameter, 50mm long • Hand Warmer Dual Lock (22mm x 9mm x 3.5mm) 2 Pieces 	

Hand Warmer Accessory

9.2



Product Description	Product Code
2-Hands Dome	IDM-DOME

To enclose the area around the hands, and to better maintain the air temperature, a dome-shaped hood is available as an option.

- This dome reduces heat loss, resulting in a decreased power consumption, without compromising comfort.
- The dome can be ordered as an optional accessory.
- The dome is delivered with four sets of hook and loop tape strips to attach the dome to any flat surface (ex. Tray).
- The dome openings can be easily adjusted by cutting or shaving in order to meet the users needs.

CAUTION

Use the proper tools to adjust the dome openings. The warranty will be voided for any fault as a result of adjusting the dome.

Preparations

10.1

Only a qualified service technician may install the Hand Warmer.

WARNING

An incorrect programming of the Hand Warmer or chair electronics may cause damage to the devices or injury to the user.

Tools

10.2

Use the proper tools to install and adjust the Hand Warmer set to the chair.

CAUTION

Use the proper tools to install and adjust the Hand Warmer. The use of improper tools may cause damage to the device.

Installation Plan

10.3

Set up an installation plan before starting the installation of the Hand Warmer. This plan should be based on the users' needs:

- Where the Hand Warmer should be placed.
- How the Hand Warmer will be operated.
- The Hand Warmer parameter settings.

CAUTION

Any connection must always be secured with all delivered screws. Only use the screws provided in the package.

Installation

11.1

1. Define the place and position of the Hand Warmer on the wheelchair. The Hand Warmer can be mounted on any location of the chair.
2. Secure the Quick-to-Mount half clamp and bolt on the bottom of the Hand Warmer housing. (2 positions is 90° steps are possible)
3. Slide the unit over a Quick-to-Mount rod to position the Hand Warmer on the wheelchair. (The rod and bolt are included)

CAUTION

Tighten screws firmly, but not excessively. Excessive force may damage the unit.

Connecting

11.2

Place and connect the Hand Warmer Extension Lead (included) with the Hand Warmer connector and lead the XLR power cable to the wheelchair joystick or battery. Secure the power cable to the wheelchair.

WARNING

Make sure that cabling is mounted in such a way that excessive wear and tear is avoided.

WARNING

The XLR power cable connector contains a fuse. Use an adapter to connect to non-XLR power connections.

Operation and Level Selection

12.1

At the back of the device, a push button and jack connection are available. A button connected to the jack connection has the same functionality as the on-board push button.

The functionality of the button is to cycle through the levels (powers settings) of the device. You can adjust the number of levels using the mo-Vis Configurator Software to alter the parameters.

The green LED at the front of the hand warmer interface indicates the status of the device:

Mode	LED Indicator
Sleep Mode	Off
Stand-by	Short on, very long off
Active Level 1	Short on, long off
Active Level 2	Short on, medium off
Active Level 3	Short on, short off
Fault	Number of flashes, long off

Parameter Configuration

12.2

The device is equally equipped with an isolated mini USB connection at the back. Use this connection to connect the device to a PC to connect with the mo-Vis Software.

Automatic Error Detection

12.3

The Hand Warmer contains a controller that continuously checks the integrity of the device. Whenever a problem is detected, the device will be switched off automatically. Check the fault flash code or use the configurator to check why the device has stopped.

Software Capabilities

13.1

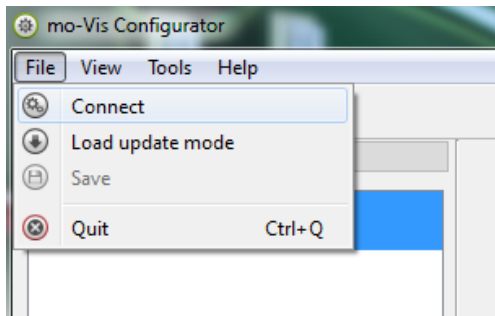
It is possible to adjust the working of the Hand Warmer according to the users' needs. The following are fully adjustable:

- Auto Off time
- Number of Power Settings (Maximum of 3)
- Minimum/Maximum temperature of the heater
- Minimum/Maximum speed of the fan (airflow)

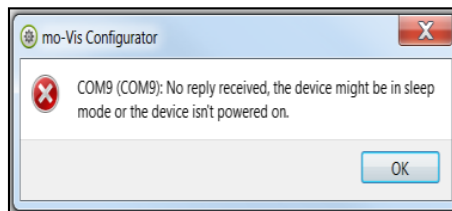
Software Download

13.2

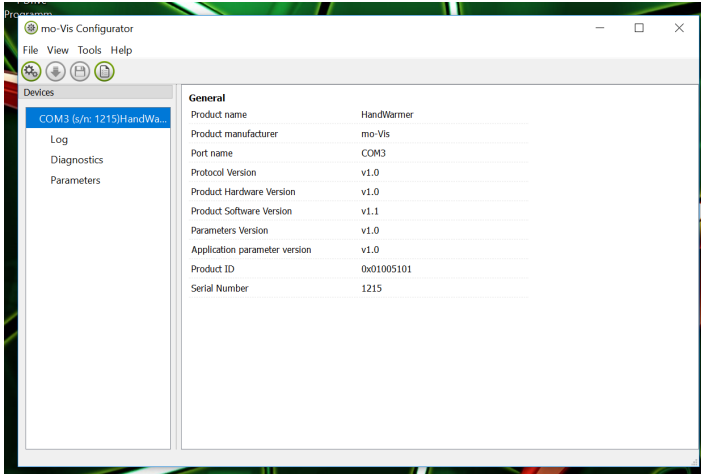
1. You can download the software on the Stealth website: www.stealthproducts.com.
2. Connect the Hand Warmer to the PC using a mini USB cable.
3. Open the mo-Vis Configurator Software. Your computer will choose a COM port and recognize the product that is linked to the PC, but will still show the status "Disconnected".
4. Click on the Connect icon to make the connection between the Configurator Software and the Hand Warmer, or choose in the menu bar, File-Connect.



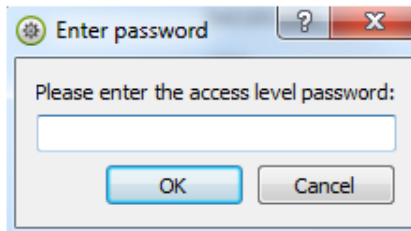
5. When the device is in sleep mode or not powered on, you will receive this message:



6. Once the connection is made, the software will receive all the details and information out of the mo-Vis device and will display them on the right hand side of the window.



7. The software program always starts at the lowest Access Level. In order to receive more information or see and change more parameters, you can upgrade your Access Level from User to Attendant or Dealer.
- To change levels, click on Tools. In the drop down menu, select the Access Level you would like to use. For a User profile, no password is required.
 - You will be asked to enter your password. This password will need to be requested.

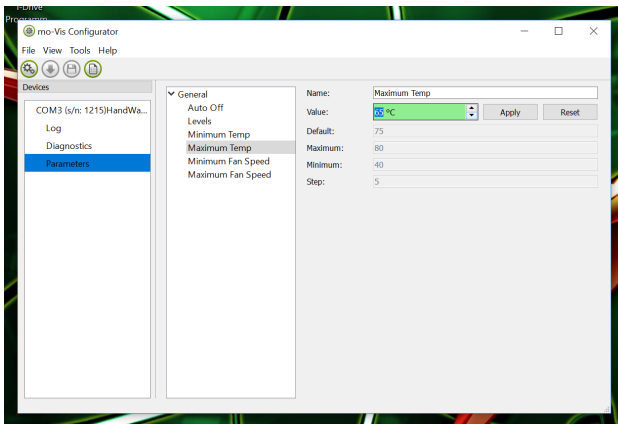
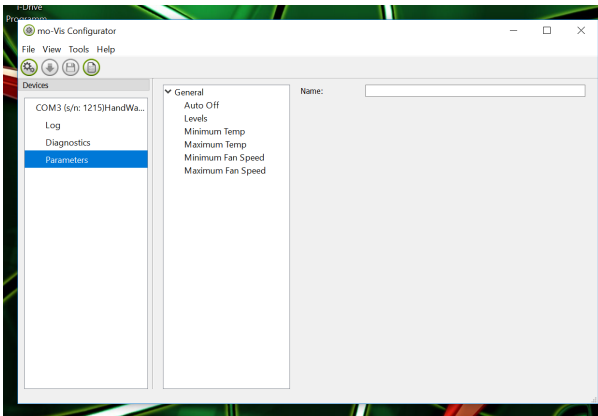


Contact Stealth Products to obtain passwords for Dealer and/ or User Access Levels.

8. After the password has been correctly entered, you will be asked to restart the application. **Any unsaved changes will be lost. If you did make changes and want to save them, choose NO and first save your changes.** If it is okay to restart the application, click Yes. The device will now be disconnected.
- Repeat Step 4 to connect the device back to the computer.
 - Depending on the Access Level, you will see General Information, Parameters, Log, and Diagnostics.

9. When Parameters is selected, a list of parameters will be shown.

- By selecting the specific parameter you wish to adjust, the view on the right will display the stored *Default*, *Minimum* and *Maximum* values of the specific parameter.
- The parameter can now be changed by entering a new value in the textbox, by clicking the arrows next to the box, or by selecting a new value from the drop down box.
- Values that are being changed will be shown in green.



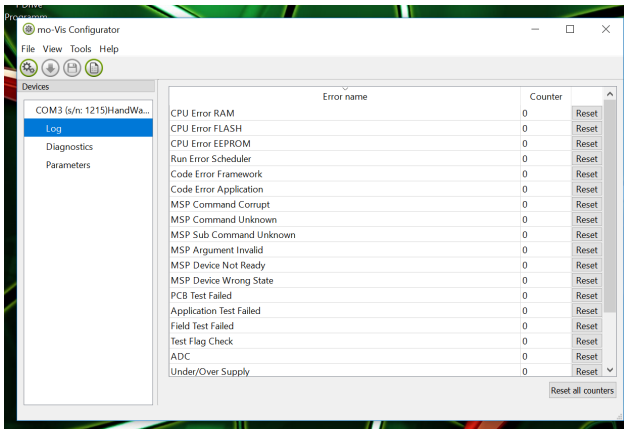
- Click *Apply* to write the temporary value in the device. You can immediately test it, but the new value is not stored yet.
- If you lose connection, any changes you made will be lost. If you would like to store the parameter values into the device, click on the *Save* icon or click in the menu bar, *File-Save*. The new parameter values will now be stored permanently in the device.

Attention: When a parameter is changed without clicking the Apply button, the new values are not remembered. Once another parameter setting is selected, the previous parameter will go back to the original setting.

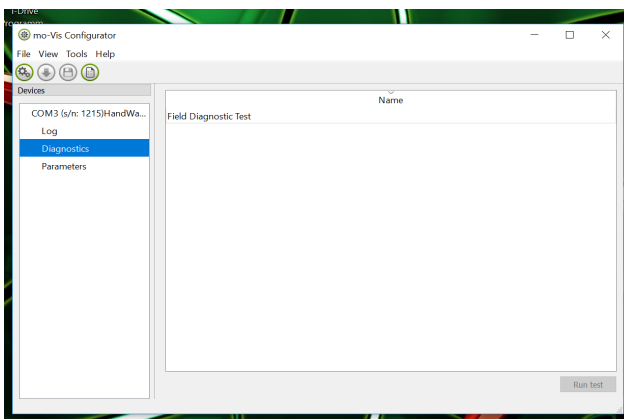
Clicking on the *Reset* button will set the parameter value back to the default value. Click *Apply* to store locally and *Save* to make the change to the device.

10. When your Access Level is set to *Dealer*, the categories *Log* and *Diagnostics* will be displayed as well.

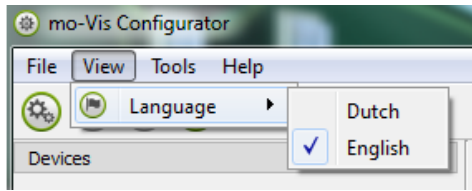
- When *Log* is selected, an overview of all occurred errors and/or actions will be displayed with a number of times that they occurred, and a Reset button to set the counter back to zero.



- When *Diagnostics* is selected, you will be able to run a Field Diagnostic Test. Click on *Field Diagnostic Test* and then *Run Test* to start the Field Test.



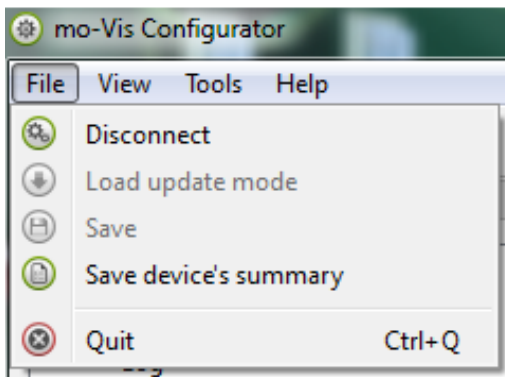
11. To change the language of the Configurator Software, click File-View on the menu bar and select the language you prefer.



12. Save the device summary. You can save all general product information and values of the different parameters in any folder on your computer.
- Make sure the Hand Warmer is connected to the USB port of the PC.
 - If the Hand Warmer is recognized it will appear in the *Device View*.
 - Select the correct device in *Device View*.
 - Click on the menu bar on *File-Save Device's Summary* or click directly on the *Save Device Summary* icon. Choose a location to save the file.
13. To close the Configurator Software, choose *File-Quit (Ctrl + Q)* in the menu bar, or click on the X of the window.

Attention: You will lose all unsaved values if you quit the software without first clicking on *Apply* and *Save*. If you use the menu bar to quit, your values will be saved automatically once you have clicked *Apply*.

If you use the small cross on the right cross on the right corner of the window, the software will automatically ask if you would like to save your changes before closing.



After the installation of the Hand Warmer, execute the following tests before the wheelchair is delivered or put into service, in this order:

- Check the Hand Warmer for intactness
- Operational Test
- Test Drive

Check that the Hand Warmer

14.1

- Is not damaged.
- Housing, cabling, and all connectors are not damaged.
- Adjusts to the programmed temperature for the user.

Operational Test

14.2

1. Activate the wheelchair.
2. Check for any error messages. If the LED light is flashing, an error is detected. Do not proceed before resolving the error.

Test Drive

14.3

The Hand Warmer can be mounted at any location on the wheelchair.

1. Perform a test drive with the wheelchair.
2. Check that the chair and Hand Warmer and all of its operations are fully functioning.

Check that no cabling or parts may become damp.

WARNING

Check that the Hand Warmer is the correct temperature and that the user can operate the chair properly with the Hand Warmer attached.

User Adjustments

15.1

As a user or attendant, you can make a limited number of parameter adjustments with the mo-Vis Configurator Software.

Although the number of parameters you can change as a user or attendant is limited, we advise changing only parameters you are familiar with.

For a list of parameter settings, see *Section 18.0*.

WARNING

Changes in parameter settings may cause damage to devices or to the wheelchair, or may cause injuries to those around.

CAUTION

Only change parameters when there is no person sitting in the wheelchair.

CAUTION

Only test new chair settings when there is no person sitting in the wheelchair.

When a fault occurs the LED will start to flash. There is a long delay and then a number of flashes with a short delay. Count the number of flashes and look up the according code in the table below.

Flash Count	Reason	Required Action
1	-	-
2	-	-
3	Power Supply, Under/Over Voltage	Check Power Connections and power cable
4	Temp Sensor	Replace PCB
5	Power Switch	Replace PCB
6	ADC Interanal Analog to Digital Convertor	Replace PCB
7	Test failed or diagnostic failed	Redo Tests Replace PCB
8	CPU Fault	Replace PCB
9	Scheduler Fault	Update Software Replace PCB
10	Coding Error	Update Software Replace PCB

If the problem persists after intervening, please contact your dealer to assist with the problem.

User Adjustments

15.1

As a user or attendant, you can make a limited number of parameter adjustments with the mo-Vis Configurator Software.

Although the number of parameters you can change as a user or attendant is limited, we advise changing only parameters you are familiar with.

For a list of parameter settings, see *Section 18.0*.

Fault	Reason	Required Action
CPU Error RAM	-CPU consistency check failed	Replace PCB
CPU Error FLASH		
CPU Error EEPROM		
Run Error Scheduler	-Firmware Consistency check failed.	Update Software or Replace PCB
Code Error Framework		
Code Error Application		
MSP Command Corrupt	-Corrupt command was received.	Connection with the PC (Configurator program) went wrong, try again.
MSP Command Unknown	-Unknown command was received.	Connection with the PC (Configurator program) went wrong. Update Firmware or update Configurator Software. Try again.
MSP Sup Command Unknown	-Unknown Sub Command was received.	
MSP Argument Invalid	-Invalid argument received.	
MSP Device Not Ready	-Device as not ready to receive an MSP command.	
MSP Device Wrong State	-The device is not able to receive a command in the current device state.	

Fault	Reason	Required Action
PCB Test Failed	-Factory test failed.	A fault occurred during factory testing.
CPU Error FLASH		
Field Test Failed	-Field test failed (Calibration).	A fault occurred during field testing (Calibration).
Test Flag Check	-Corrupt command was received.	Connection with the PC (Configurator program) went wrong, try again.
ADC	-ADC Conversion Error.	Replace Device
Under/ Over Supply	-Over/ Under voltage detected.	Check the power connection and power cable
Too Hot	-Heating system or temp sensor is faulty.	Remove dust in device and replace device if not solved.
Power Switch	-Internal safety power switch faulty.	Replace Device
Temp Sensor	-Temp sensor failed	

Parameter Settings

18.1

With the mo-Vis Configurator Software you can change the parameters of the Hand Warmer. Depending on your user profile (User, Attendant, Dealer, OEM), you will be able to change a number of parameters.

Parameter	Min	Max	De-fault	Description
Auto Off	0	600	240	-The device will automatically switch off after a set time (in minutes). -Changing the level (using the button) will reset the timer. -A value of 0 means the device will never switch off.
Levels	1	3	3	-The number of available power levels.
Minimum Temperature	40°C 104°F	80°C 176°F	50°C 122°F	-The temperature of the heater at the lowest power level.
Maximum Temperature	40°C 104°F	80°C 176°F	75°C 167°F	-The temperature of the heater at the highest power level.
Minimum Fan Speed	10	100	20	-The fan speed (airflow) (in%) at the lowest power level.
Maximum Fan Speed	10	100	85	-The fan speed (airflow) (in %) at the highest power level.

Dealer Assistance

19.1

During first time use by the client, it is advised that the dealer or service technician assists and explains the different drive configurations to the customer (the user and/or the attendant). If needed, the dealer can make final adjustments.

User Testing

19.2

It is important that the customer is fully aware of the installation, how to use it, and what can be adjusted in order to gain as much mobility as possible. As a dealer, proceed as follows:

- Explain and show the customer how you have executed the installation, and explain the function of every new item.

Have the user test all positions of the Hand Warmer (and the optional 2-hands dome):

- Is the Hand Warmer well positioned in accordance with the client's needs?
- Can the user safely operate the Hand Warmer with the least effort?
- Is the heating of the Hand Warmer in available levels optimal for the user?

If needed, adjust the Hand Warmer and retest until it is in the optimal position and functions properly.

Explain to the customer the possible problems and how to address them.

Conditions of Use

19.3

The Hand Warmer is intended for use as installed by the dealer, in accordance to the instructions in this manual.

- The foreseen conditions of use are communicated by the dealer or service technician to the user and/or attendant during the first time use.
- If the conditions of use change significantly, please contact your dealer or a qualified service technician to avoid excessive wear and tear or unintended damage.

Cleaning

20.1

Clean all parts of the Hand Warmer and the optional 2-Hands Dome on a regular basis, or when needed.

- Gently remove dust and dirt with a damp cloth.
- Use only non-aggressive disinfectant cleaning agents.

WARNING

Do not immerse the Hand Warmer in water or use excessive amounts of liquid near the Hand Warmer.

Monthly Check

20.2

Monthly, or when needed, check that:

- All bolts and screws are firmly tightened.
- There is no damage to any wiring.
- There is no excessive wear to any of the parts.

Hand Warmer Maintenance

20.3

The Hand Warmer is maintenance free. Under regular use circumstances, the Hand Warmer unit does not require additional maintenance.

Product Description and Code

21.1

- Hand Warmer Set (IDM-HW)
- Hand Warmer Dome (IDM-DOME)

Dimensions

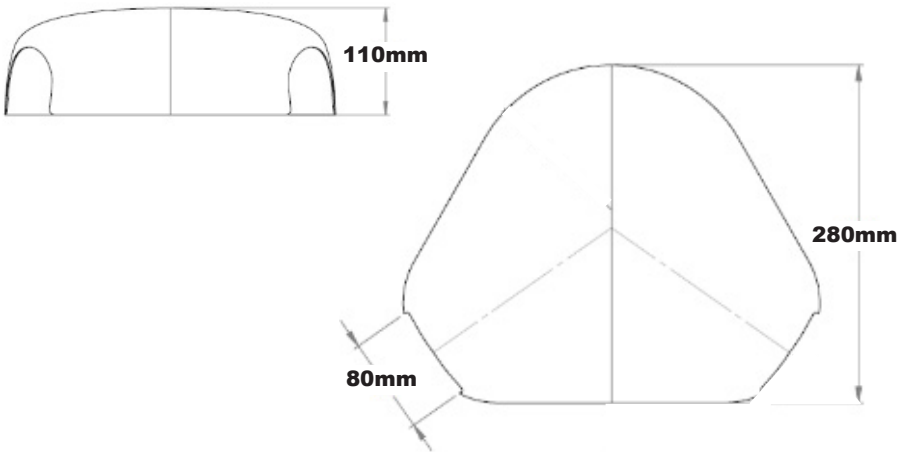
21.2

Hand Warmer Dimensions

- 50mm x 29mm x 29mm (H x W x D)
1.97in x 1.41in x 1.41in (H x W x D)

Hand Warmer Dome Dimensions

- 100mm x 80mm x 280mm (H x W x D) (W=Width of hand opening)
3.93in x 3.14in x 11.02in (H x W x D) (W=Width of hand opening)



Voltage Supply

21.3

- Safety Limits: 12 to 35V
- Normal Use: 18 to 26V

Current Supply 21.4

- At full power: 2.0A

Power Consumption 21.5

- Idle Mode: 20mA
- Sleep Mode: 1.7mA

Cable Length 21.6

- Pigtail: 150mm (5.9in) (.49ft)
- Extension Lead: 1800mm (70.86in) (5.9ft)

XLR Connector 21.7

- Pin 1: V+ (internally fused 5 A)
- Pin 2: GND
- Pin 3: NC

Weight 21.8

- 125g (4.4oz)

Heater Temperature Solution 21.9

- 100°C (212°F)

EMC Requirements

20.1.0

The electronics of a power wheelchair and its options can be affected by external electromagnetic fields (ex. Mobile phones). Similarly, the electronics of the wheelchair or options themselves can also emit electromagnetic fields that can affect the immediate surroundings.

The limit values for Electromagnetic Compatibility (EMC) with respect to power wheelchairs are set in the harmonized standards for the EU in the Medical Devices Directive, No. 93/42/EEC. The Hand Warmer complies with these limit values.



Stealth Products, LLC. • info@stealthproducts.com • www.stealthproducts.com
+1(800) 965-9229 | +1(512) 715-9995 | 104 John Kelly Drive, Burnet TX 78611