

Stealth Products[®]



**Backs &
Support**



ADI 4-Point PRO Hardware

Owner's Manual - Maintenance Guide
ADI 4-Point PRO Mounting Hardware
for Aluminum & Carbon Series Backs

Customer Satisfaction i
 General i

Important Information ii-iii
 Warranty ii
 Supplier Reference ii
 Warning Labels iii
 Limited Liability iii

Parts and Accessories 1-2
 Tools Required for Installation and Adjustment 1
 Parts Required 1
 4 Point PRO Mounting Hardware Assembly 1
 4 Point PRO Torque Specification 2

Installation Instructions 3-7
 Hardware Installation 3
 Angle Adjustment 6
 Depth Adjustment 6
 Width Adjustment 7

First-Time Use 8
 Dealer Assistance 8
 User Testing 8
 Conditions of Use 8

Maintenance 9
 Cleaning 9
 Disinfection 9

Notes 10

Stealth Products is committed to 100% customer satisfaction. Your complete satisfaction is important to us. Please contact us with feedback or suggestions to help us improve the quality and usability of our products.

You may reach us at:



Stealth Products, LLC

104 John Kelly Drive, Burnet, TX 78611

Phone: (512) 715-9995

Fax: (512) 715-9954

Toll Free: (800) 965-9229

Toll Free: (800) 806-1225

info@stealthproducts.com

www.stealthproducts.com



<p>EC REP</p> <p>MDSS GmbH Schiffgraben 41 30175 Hannover Germany</p>	<p>CH REP</p> <p>SODIMED SA Chemin Praz Devant 12 1032 Romanel sur-Lausanne Switzerland</p>	<p>UK Authorized Representative</p> <p>MDSS-UK RP 6 Wilmslow Road, Rusholme Manchester M14 5TP United Kingdom</p>
---	---	---

General

Read and understand all instructions prior to the use of the product. Failure to adhere to instructions and warnings in this document may result in property damage, injury, or death. Product misuse or failure to follow instructions will void the warranty.

Immediately discontinue use if any function is compromised, if parts are missing or loose, or if any component shows signs of excessive wear. Consult with your supplier for repair, adjustment, or replacement.

All persons responsible for fitting, adjustment, and daily use of the devices discussed in these instructions must be familiar with and understand all safety aspects of the devices mentioned. In order for our products to be used successfully, you must read and understand all instructions and warnings, and maintain our products according to our instructions on care and maintenance.

The installation instructions will guide you through this product's options and possibilities.

Instructions are written with the expressed intent of use with standard configurations. They also contain important safety and maintenance information, as well as describe possible problems that can arise during use. For further assistance, or more advanced applications, please contact your supplier or **Stealth Products** at (512) 715-9995 or toll free at (800) 965-9229.

Always keep the operating instructions in a safe place so they may be referenced as necessary.

All information, pictures, illustrations, and specifications are based on the product information that was available at the time of printing. Pictures and illustrations shown in these instructions are representative examples and are not intended to be exact depictions of the various parts of the product.

 **CAUTION**

These products are designed to be fitted, applied, and installed exclusively by a healthcare professional trained for these purposes. The fitting, application, and installation by a non-qualified individual could result in serious injury.

Warranty

Our products are designed, manufactured, and produced to the highest of standards. If any defect in material or workmanship is found, Stealth Products will repair or replace the product at our discretion. Any implied warranty, including the implied warranties of merchantability and fitness for a particular purpose, shall not extend beyond the duration of this warranty. **Stealth Products** does not warrant damage due to, but not limited to: misuse, abuse, or misapplication of product, and/or modification of product without written approval from **Stealth Products, LLC**. Any alteration or lack of serial number, where applicable, will automatically void all warranty.

Stealth Products, LLC is liable for replacement parts only. **Stealth Products, LLC** is not liable for any incurred labor costs.

Stealth Products warrants against failure due to defective materials or workmanship:

Covers: 2 years
Hardware: 5 years
Electronics: 3 years

In the event of a product failure covered by our warranty, please follow the procedures outlined below:

Call **Stealth Products** at (512) 715-9995 or toll free at (800) 965-9229.

Request a Return Authorization (RA) form from the Returns Department and follow the documentation instructions.

You can download additional copies of this manual by accessing the Stealth website (<https://stlpro.site/stealth-docs>) and searching "4 Point PRO" in the search bar at the top of the page.

Supplier Reference

Supplier:	
Telephone:	
Address:	
Purchase Date:	
Model:	

Warning Labels

Warnings are included for the safety of the user, client, operator, and property. Please read and understand what the signal words **DANGER**, **WARNING**, **CAUTION**, **NOTICE**, and **SAFETY** mean, and how they could affect the user, those around the user, and property.



DANGER

Identifies an **imminent** situation which, if not avoided, may result in **severe injury, death, and property damage**.



WARNING

Identifies a **potential** situation which, if not avoided, may result in **severe injury, death, and property damage**.



CAUTION

Identifies a **potential** situation which, if not avoided, may result in **minor to moderate injury and property damage**.

NOTICE

Identifies important information not related to injury, but possible **property damage**.

SAFETY

Indicates steps or instructions for safe practices, reminders of safe procedures, or important safety equipment that may be necessary.

Limited Liability

Stealth Products, LLC accepts no liability for personal injury or damage to property that may arise from the failure of the user or other persons to follow the recommendations, warnings, and instructions in this manual.

Stealth Products does not hold responsibility for final integration of final assembly of product to end user. **Stealth Products** is not liable for user death or injury.

Tools Required for Installation and Adjustment

- 4mm Allen wrench
- 10mm wrench

Parts Required

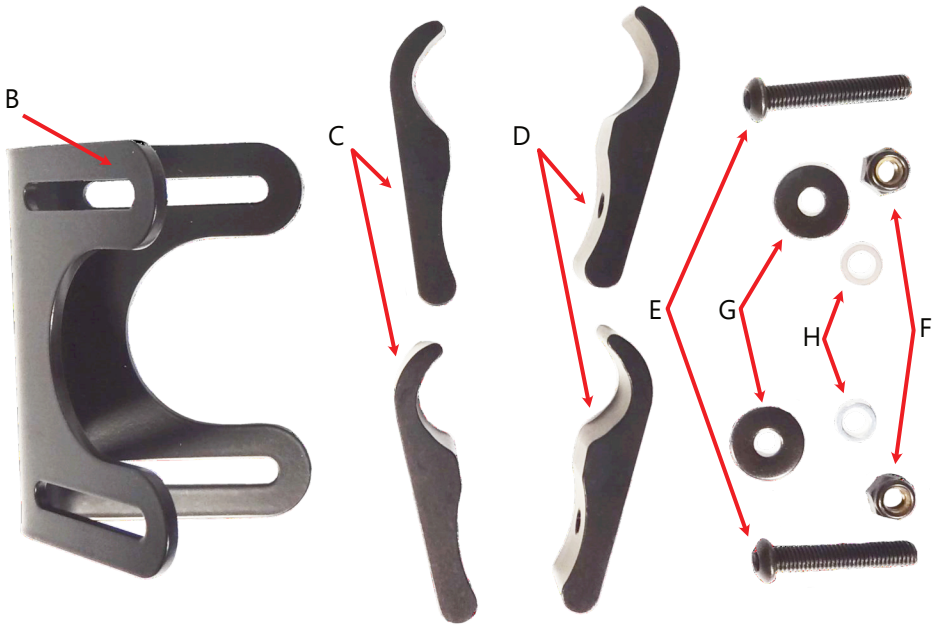
- Back Support Shell, 1 each (A)
- Bent Bracket Assembly, 2 each, attached to back (B)
- Inside Clamp, 4 each (C)
- Outside Clamp, 4 each (D)
- M6 x 35mm Bolt, 4 each (E)
- Nylock Nut, 4 each (F)
- M6 Fender Washer, 4 each (G)
- M6 ID x 10mm OD x 1mm, 4 each (H)

4 Point PRO Mounting Hardware Assembly



NOTICE

Use only the hardware supplied with the ADI back on the ADI back. Do not substitute any other screws, brackets or clamps. Use of alternate hardware or mounting brackets will void all warranty.



4 Point PRO Torque Specification



Part Number M6 X 1.0 X 35MM BHS

M6 x 35mm button head screw

Use: 4mm drive Allen Wrench

Torque Specs: 77.0 in-lbs/8.7 N-m



Part Number BR5011

Stud Plate (Inner side of shell)

Use: 10mm hex socket or wrench

Torque Specs: 117.0 in-lbs/13.2 N-m

Hardware Installation

1. Remove the existing wheelchair back according to the original manufacturer's instructions.
2. Visually determine the desired height of the back support.
3. Mark on the wheelchair back posts the desired location of mounting hardware.
4. Place one inner clamp (C) and one outer clamp (D) around the back cane on one side of the chair. Fasten with a 35mm bolt (E).

NOTICE

Clamp assembly should be rotated out slightly. Do not tighten completely at this stage.

Step 2



Step 3

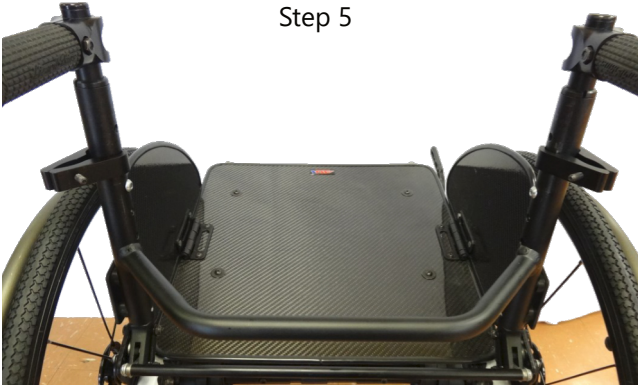


Step 4



- Repeat step 4 on the other side of the chair.
- Hold backrest in place and turn left and right clamp assemblies until the 35mm bolts (E) slide into the top slots on the bent brackets (B).

Step 5



Step 6



CAUTION

ADI backs may not fit every chair. Please consult your clinician or supplier providing your equipment.
DO NOT attach the ADI back with the user in the chair.

Installation Instructions

- Slide the remaining inner clamps (C) and outer clamps (D) into place with the 35mm bolt (E) running through the bottom slots of the bent bracket. (B).
- Fasten the bent brackets (B) onto all four 35mm bolts (E) with a washer (G) and a nylock nut (F).

Step 7

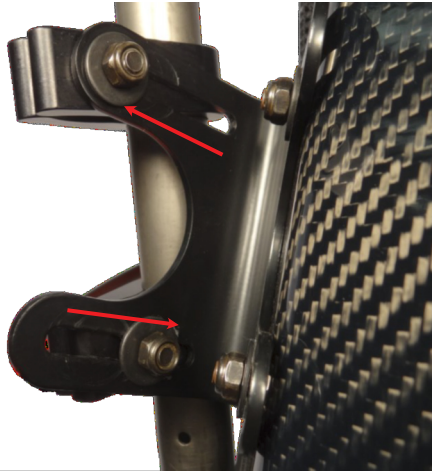


Step 8



Angle Adjustment

1. On each side of the hardware, loosen the top and bottom nuts (F) with a 10mm wrench.
2. Adjust back support to achieve desired user angle.
3. After final adjustments are complete, tighten all screws to the proper torque specification.



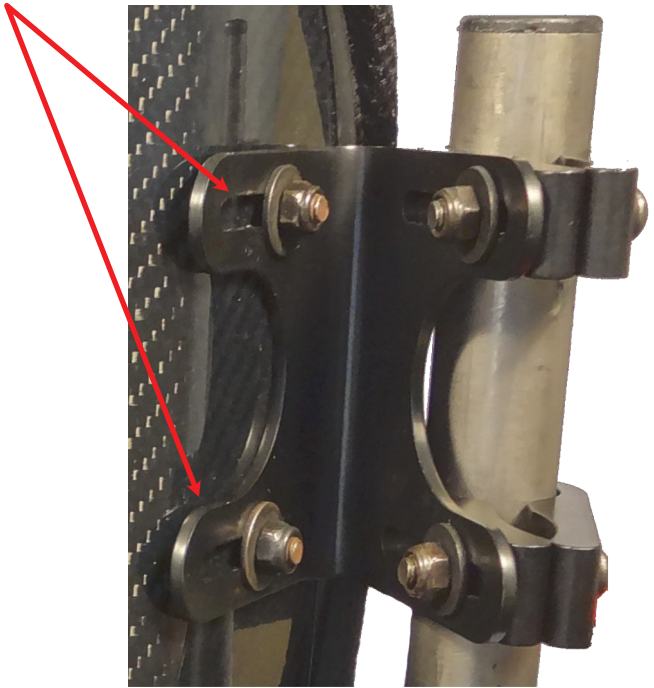
Depth Adjustment

1. On each side of the hardware, loosen the top and bottom nuts (F) with a 10mm wrench
2. Slide back support forward or aft to achieve desired users depth.
3. After final adjustments are complete, tighten all screws to the proper torque specification.



Width Adjustment

1. Remove fabric cover from back support.
2. On each side of the hardware, loosen the top and bottom nuts (as shown), using a 10mm socket or wrench.
3. Adjust hardware inward or outward to achieve required mounting hardware width.
4. After final adjustments are complete, tighten all screws to the proper torque specification.



WARNING

Protect all backs from blunt forces that may cause damage and/or breakage

CAUTION

When positioning an ADI back, the interior portion of the back support should be positioned to make a contact at the PSIS to provide optimal pelvic support and trunk control.

Dealer Assistance

During first time use by the client, it is advised that the dealer or service technician assists and explains the set-up to the customer (the user and/or the attendant). If needed, the dealer may make final adjustments.

User Testing

It is important that the customer is fully aware of the installation, how to use it, and what can be adjusted in order to gain as much mobility as possible. As a dealer, proceed as follows:

- Explain and show the customer how you have executed the installation, and explain the function of the hardware.
- If needed, adjust the hardware to the proper position.
- Explain to the customer possible problems and how to address them.

CAUTION

If you are able to fold the back canes, the back should be in the folded position when transporting the wheelchair, especially before loading for air travel.

CAUTION

Do not use ADI backs during vehicle transportation.

Conditions of Use

The ADI hardware is intended for use as installed by the dealer, in accordance with the installation instructions in this manual.

- The foreseen conditions of use are communicated by the dealer or service technician to the user and/or attendant during the first time use.
- If the usage conditions change significantly, please contact your dealer or a qualified service technician to avoid excessive wear and tear or unintended damage.

Cleaning

- Use a soft cloth to clean the back shell.
- Hand wash the foam pad cover with mild, soapy water or detergent and let dry.
- Foam pad should NOT get wet.



WARNING

DO NOT immerse foam in water.
DO NOT wash or machine dry.
DO NOT hand wash in water temperatures above 160°F (70°C).



CAUTION

Institutions **MUST** clean and disinfect product between multiple patient uses.

Disinfection

- Wipe gently with a cloth dampened with a household disinfectant.
- Allow foam to air dry thoroughly.

SAFETY

Always check all mounting hardware, making sure each fastener is properly tightened before using the back support.



WARNING

Maximum Weight Capacity
250 lb. (113.40 kg)

NOTICE

Altering an ADI backrest in any way and/or improper installation will void the warranty.



© 2022, Stealth Products, LLC

Warranty Information



Home Page



Online User Manual

