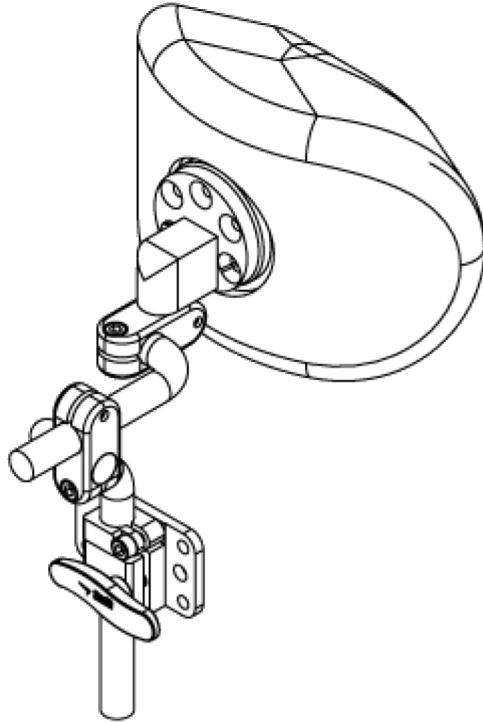


Stealth Products[®]



**Head
Support**



HMO501

Owner's Manual - Maintenance Guide

HMO501 Headrest Hardware

Table of Contents

Customer Satisfaction	i
General.....	i
Important Information.....	ii-iii
Warranty.....	ii
Warning Labels.....	iii
Limited Liability.....	iii
Testing	iii
Design and Function.....	1
Intended Use.....	1
Features.....	1
Installation Instructions	2-4
Tools.....	2
Installation Plan	2
Hardware Installation	2
Installation	3
Installing the Headrest to the Back.....	4
Adjustment Instructions.....	5-6
Height Adjustment.....	5
Depth Adjustment	6
Angle Adjustment.....	6
First Time Use	7
Dealer Assistance	7
User Testing.....	7
Conditions of Use	7
Maintenance	8
Care and Maintenance.....	8
Cleaning.....	8

Stealth Products is committed to 100% customer satisfaction. Your complete satisfaction is important to us. Please contact us with feedback or suggestions to help us improve the quality and usability of our products.

You may reach us at:



Stealth Products, LLC

104 John Kelly Drive, Burnet, TX 78611

Phone: (512) 715-9995

Toll Free: (800) 965-9229

Fax: (512) 715-9954

Toll Free: (800) 806-1225

info@stealthproducts.com

www.stealthproducts.com



<table border="1" style="width: 100%; border-collapse: collapse;"> <tr> <td style="padding: 2px;">EC</td> <td style="padding: 2px;">REP</td> </tr> </table> <p>MDSS GmbH Schiffgraben 41 30175 Hannover Germany</p>	EC	REP	<table border="1" style="width: 100%; border-collapse: collapse;"> <tr> <td style="padding: 2px;">CH</td> <td style="padding: 2px;">REP</td> </tr> </table> <p>SODIMED SA Chemin Praz Devant 12 1032 Romanel sur-Lausanne Switzerland</p>	CH	REP	<p>UK Authorized Representative</p> <p>MDSS-UK RP 6 Wilmslow Road, Rusholme Manchester M14 5TP United Kingdom</p>
EC	REP					
CH	REP					

General

Read and understand all instructions prior to the use of the product. Failure to adhere to instructions and warnings in this document may result in property damage, injury, or death. Product misuse or failure to follow instructions will void the warranty.

Immediately discontinue use if any function is compromised, if parts are missing or loose, or if any component shows signs of excessive wear. Consult with your supplier for repair, adjustment, or replacement.

All persons responsible for fitting, adjustment, and daily use of the devices discussed in these instructions must be familiar with and understand all safety aspects of the devices mentioned. In order for our products to be used successfully, you must read and understand all instructions and warnings, and maintain our products according to our instructions on care and maintenance.

The installation instructions will guide you through this product's options and possibilities.

Instructions are written with the expressed intent of use with standard configurations. They also contain important safety and maintenance information, as well as describe possible problems that can arise during use. For further assistance, or more advanced applications, please contact your supplier or **Stealth Products** at (512) 715-9995 or toll free at (800) 965-9229.

Always keep the operating instructions in a safe place so they may be referenced as necessary.

All information, pictures, illustrations, and specifications are based on the product information that was available at the time of printing. Pictures and illustrations shown in these instructions are representative examples and are not intended to be exact depictions of the various parts of the product.

Important Information

CAUTION

These products are designed to be fitted, applied, and installed exclusively by a healthcare professional trained for these purposes. The fitting, application, and installation by a non-qualified individual could result in serious injury.

Warranty

Our products are designed, manufactured, and produced to the highest of standards. If any defect in material or workmanship is found, **Stealth Products** will repair or replace the product at our discretion. Any implied warranty, including the implied warranties of merchantability and fitness for a particular purpose, shall not extend beyond the duration of this warranty. **Stealth Products** does not warrant damage due to, but not limited to: Misuse, abuse, or misapplication of product, and/or modification of product without written approval from **Stealth Products, LLC**. Any alteration or lack of serial number, where applicable, will automatically void all warranty.

Stealth Products, LLC is liable for replacement parts only. **Stealth Products, LLC** is not liable for any incurred labor costs.

Stealth Products warrants against failure due to defective materials or workmanship:

Covers: 2 years
Hardware: 5 years
Electronics: 3 years

In the event of a product failure covered by our warranty, please follow the procedures outlined below:

Call **Stealth Products** at (512) 715-9995 or toll free at (800) 965-9229.

Request a Return Authorization (RA) form from the Returns Department and follow the documentation instructions.

You can download additional copies of this manual by accessing the Stealth website (www.stlpro.site/stealth-docs) and searching "P17D582" in the search bar at the top of the page.

Supplier Reference

Supplier:	
Telephone:	
Address:	
Purchase Date:	
Model:	

Warning Labels

Warnings are included for the safety of the user, client, operator, and property. Please read and understand what the signal words **DANGER**, **WARNING**, **CAUTION**, **NOTICE**, and **SAFETY** mean, and how they could affect the user, those around the user, and property.

DANGER

Identifies an **imminent** situation which, if not avoided, may result in **severe injury, death, and property damage**.

WARNING

Identifies a **potential** situation which, if not avoided, may result in **severe injury, death, and property damage**.

CAUTION

Identifies a **potential** situation which, if not avoided, may result in **minor to moderate injury and property damage**.

NOTICE

Identifies important information not related to injury, but possible **property damage**.

SAFETY

Indicates steps or instructions for safe practices, reminders of safe procedures, or important safety equipment that may be necessary.

Limited Liability

Stealth Products, LLC accepts no liability for personal injury or damage to property that may arise from the failure of the user or other persons to follow the recommendations, warnings, and instructions in this manual.

Stealth Products does not hold responsibility for final integration of final assembly of product to end user. **Stealth Products** is not liable for user death or injury.

Testing

Initial setup and driving should be done in an open area free of obstacles until the user is fully capable of driving safely.

The HMO501 Headrest Hardware should always be tested without any person sitting in the wheelchair until every alteration of the physical installation or adjustment is complete.

Intended Use

The HMO501 is a lightweight mounting bracket for use with Stealth's headrests. This hardware is designed to provide multi-axis positioning of head supports, increasing the ability to properly accommodate asymmetrical head positioning.

Features

The HMO501 hardware:

- is lightweight, multi-axis hardware.
- offers height, depth, and angle adjustments through the loosening/tightening of a screw.
- is compatible with all Stealth headrests.
- accommodates existing headrests through the use of a multi-hole pattern.
- is compatible with after-market headrests.



WARNING

Stealth does not recommend the **HMO501** for clients with high tone.

WARNING

The **HMO501** should be installed only by a qualified service technician.

Tools

- 4mm Allen wrench/hex key
- Torque wrench

Installation Plan

Set up an installation plan before installing or making any adjustments to the hardware. Based on the user's needs, this plan should specify:

- what height is required for the headrest.
- which angle the mounting bracket and horizontal bar need to be placed in order to promote the best fit of the headrest to the client.

CAUTION

Use the proper tools to install and adjust the HMO501 hardware.
The use of improper tools may cause damage to the device.

Hardware Installation

For more detailed instructions pertaining to the installation of the HMO501, refer to the instructions located in the Diego Seating System Owner's Manual.

Installation

- Install the hardware onto the corresponding headrest for the client.
- Determine the correct placement of the hardware on the chair. If the height needs to be changed, follow the instructions in the following section on adjustment.
- If the angles of the hardware need to be adjusted, loosen the required screws and make the adjustments necessary until the headrest is in the correct position.
- Make any final adjustments necessary and ensure all screws are in place and tightened sufficiently.

CAUTION

Tighten the screws firmly, but excessively.
Excessive force may damage the unit.

CAUTION

Use only the screws provided in the package with the hardware.

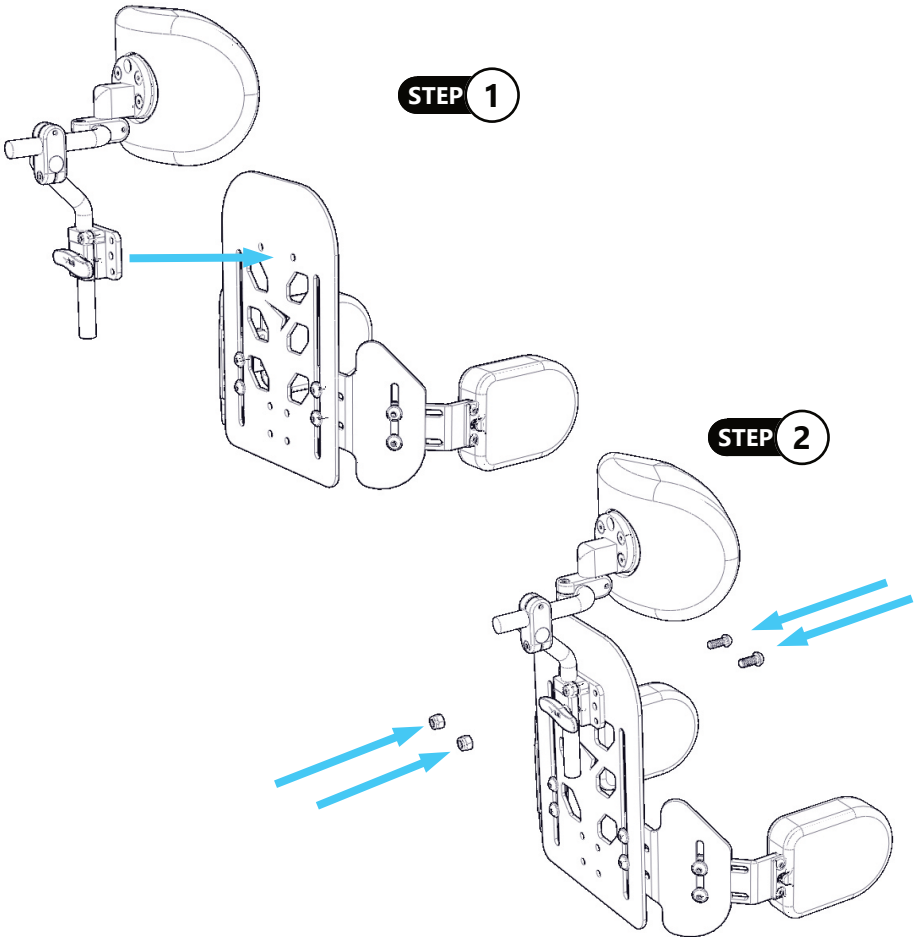
WARNING

Discontinue use if any product's function becomes compromised, loose, shows signs of excessive wear, missing parts, or does not function as needed.

Installing the Headrest to the Back

Step One: Align the holes on the Seat Back Mount with the mounting holes of the back.

Step Two: Use the M6 x 1 x 22mm Button Head Screws with the M6 x 1 Nylon Lock Nut. Torque to 10 N·m. Ensure the button head screws are installed from the user side of the back to minimize the chance of discomfort for the user.



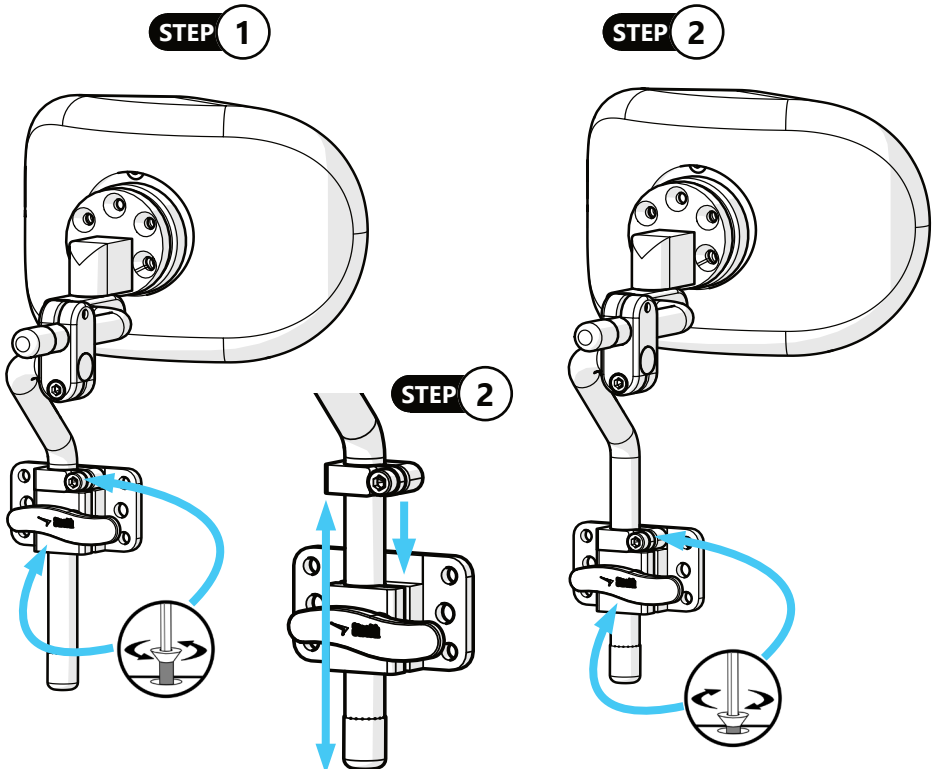
Adjustment

The HMO501 has height, depth, and angle adjustments that can easily be changed by simply loosening one of the five available adjustment points.

Height Adjustment

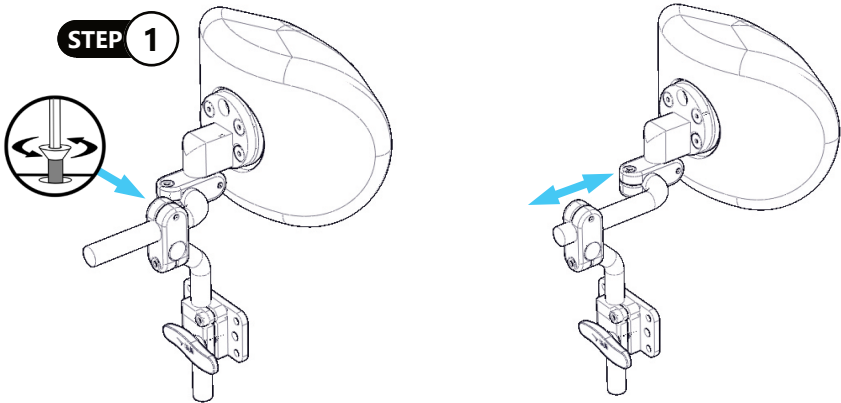
1. First, loosen the screw securing the stop collar to the vertical rod. Verify that the stop collar is free to move on the vertical rod. Loosen the handle on the seat back mount to free the vertical rod for adjustment.
2. Slide the headrest to the desired height. A total of 2.5 inches of height adjustment is available.
3. Once the desired height and position of the **HMO501** has been reached, allow the stop collar to slide down to rest on the seat back mount. Tighten the handle on the seat back mount to secure it in position. Tighten the screw on the stop collar to lock it in position.

NOTE: Minor lateral positioning (left and right with respect to the center line of the seat back mount) is possible by rotating the vertical bar in the seat back mount prior to tightening the handle.



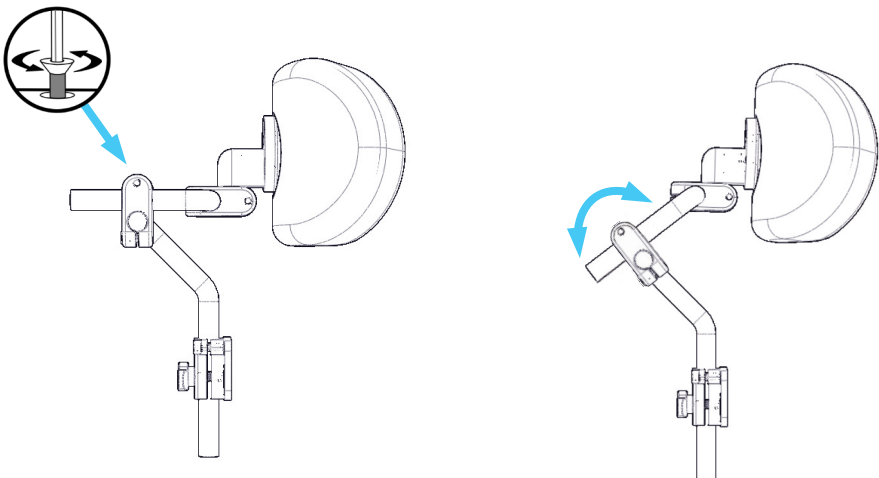
Depth Adjustment

- The depth of the horizontal bar that can be adjusted up to 2.5"
- Loosen the M5 screw on the side of the bar clamp, which holds the horizontal bar in place. By loosening the screw, depth adjustment can be made.
- When the horizontal bar has reached the desired depth on the hardware, tighten the M5 screw on the bar clamp until it is secure



Angle Adjustment

- Two points of angle adjustment are available on the hardware.
- Adjustment points include horizontal bar angle and the angle of the adapter plate.



Dealer Assistance

During first time use by the client, it is advised that the dealer or service technician assists and explains the configuration to the customer (the user and/or the attendant). If needed, the dealer can make final adjustments.

User Testing

It is important that the customer is fully aware of the installation and how the product can be adjusted in order to gain the best positioning possible. As a dealer, proceed as follows:

- Explain and show the client how you have executed the installation, and explain the function.

Have the user test the position of the product:

- Is the **HMO501** in the proper position for the client?
- Can the user safely operate the chair in the position in which they are seated?
- Is the placement of **HMO501** in an optimal position for the client?

If needed, adjust the hardware to the proper position.

Explain to the client the possible problems and how to address them.

Conditions of Use

The **HMO501** is intended for use as installed by the dealer, in accordance to the installation instructions in this manual.

- The foreseen conditions of use are communicated by the dealer or service technician to the user and/or attendant during the first time use.
- If the conditions of use change significantly, please contact your dealer or a qualified service technician to avoid excessive wear and tear or unintended damage.

Care and Maintenance

We recommend that the hardware be checked for wear and function on a periodic basis and replaced, if necessary, by a wheelchair professional.

- Discontinue use after identifying loose or broken components.
- Check and tighten all screws according to their installation instructions.
- Repairs should be performed with genuine Stealth parts, fasteners, or items appropriate for the service needed.

Cleaning

Surfaces may be wiped clean with a damp cloth and mild, non-abrasive cleaner.

Ensure all cleaners are approved for finished steel, aluminum, plastic and upholstered surfaces.



DANGER

Failure to comply with these warnings could result in serious bodily harm.



© 2023, Stealth Products, LLC

Warranty Information



Home Page



Online User Manual



Stealth Products, LLC · info@stealthproducts.com · www.stealthproducts.com
(800) 965-9229 | (512) 715-9995 | 104 John Kelly Drive, Burnet, TX 78611