



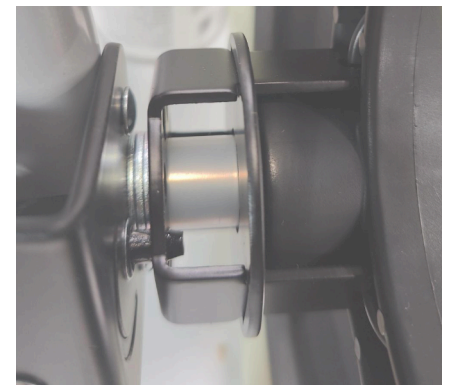
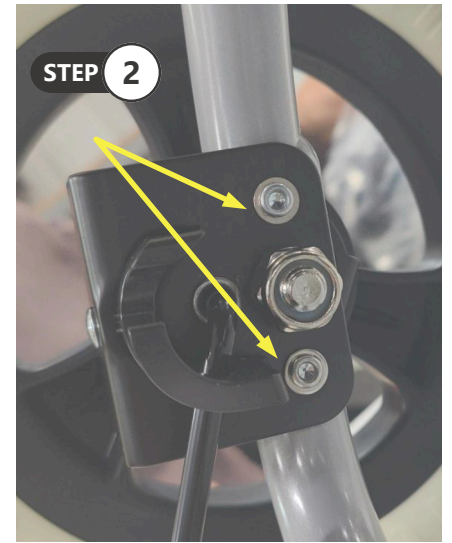
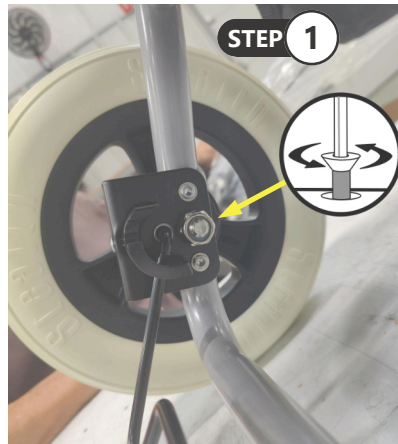
Stealth Products®

Lightning Pushchair

LT-11, LT-14, LT-16

Brake System Replacement Guide

1. Remove the rear wheels from the pushchair by removing the Nylon Lock Nut securing the axles to the frame. Keep the washers and rotor installed on the axle and set the wheels aside.
2. Using a drill with 1/4" bit or a grinder, carefully drill the center or grind the edges of the rivets located above and below the axle holes. Once the bent ends of the rivets are ground smooth and the retaining washers have come free, use a punch or other tool to press the rivet bodies out.
3. The brake assemblies and actuator rod should come free from the frame. Remove it completely and set it aside.
4. Take the new brake assembly and cut the zip ties securing the mounts to the actuator rod. Place the assembly on the frame and line up the holes in the assembly with the holes in the frame.
5. Insert two 1-1/2" 10-32 Button Head Screws from the outside (wheel) side of the brake assembly through the frame to the inside and secure them in place with the 10-32 nylon lock nuts provided. Repeat for the other side of the brake assembly.
6. Reinstall the wheels through the brake assemblies and the frame and secure with the nylon lock nuts as shown in the illustration to the right.



Remove the zip ties from the assemblies prior to attempting to install.

Once the wheels are reinstalled, verify that about 1/8" of the end of the actuator rod is protruding from the inside of the rotor.

