

Stealth Products[®]



**Pelvic
Support**



The World's Best Adductors

Owner's Manual - Maintenance Guide

The World's Best Adductors for Invacare

Customer Satisfaction i
 General i

Important Information ii-iii
 Warranty ii
 Warning Labels iii
 Limited Liability iii
 Testing iii

Installation Instructions 1-2
 Operating Laterals 1
 Adjusting Laterals 1
 Standard Cane Mounting 2

First Time Use 3
 Dealer Assistance 3
 User Testing 3
 Conditions of Use 3

Maintenance 4
 Cleaning 4
 Maintenance 4

Notes 5-6

Customer Satisfaction

Stealth Products is committed to 100% customer satisfaction. Your complete satisfaction is important to us. Please contact us with feedback or suggestions to help us improve the quality and usability of our products.

You may reach us at:



Stealth Products, LLC

104 John Kelly Drive, Burnet, TX 78611

Phone: (512) 715-9995

Fax: (512) 715-9954

Toll Free: (800) 965-9229

Toll Free: (800) 806-1225

info@stealthproducts.com

www.stealthproducts.com



EC REP MDSS GmbH Schiffgraben 41 30175 Hannover Germany	CH REP SODIMED SA Chemin Praz Devant 12 1032 Romanel sur-Lausanne Switzerland	UK Authorized Representative MDSS-UK RP 6 Wilmslow Road, Rusholme Manchester M14 5TP United Kingdom
--	--	---

General

Read and understand all instructions prior to the use of the product. Failure to adhere to instructions and warnings in this document may result in property damage, injury, or death. Product misuse or failure to follow instructions will void the warranty.

Immediately discontinue use if any function is compromised, if parts are missing or loose, or if any component shows signs of excessive wear. Consult with your supplier for repair, adjustment, or replacement.

All persons responsible for fitting, adjustment, and daily use of the devices discussed in these instructions must be familiar with and understand all safety aspects of the devices mentioned. In order for our products to be used successfully, you must read and understand all instructions and warnings, and maintain our products according to our instructions on care and maintenance.

The installation instructions will guide you through this product's options and possibilities.

Instructions are written with the expressed intent of use with standard configurations. They also contain important safety and maintenance information, as well as describe possible problems that can arise during use. For further assistance, or more advanced applications, please contact your supplier or **Stealth Products** at (512) 715-9995 or toll free at (800) 965-9229.

Always keep the operating instructions in a safe place so they may be referenced as necessary.

All information, pictures, illustrations, and specifications are based on the product information that was available at the time of printing. Pictures and illustrations shown in these instructions are representative examples and are not intended to be exact depictions of the various parts of the product.

Important Information

CAUTION

These products are designed to be fitted, applied, and installed exclusively by a healthcare professional trained for these purposes. The fitting, application, and installation by a non-qualified individual could result in serious injury.

Warranty

Our products are designed, manufactured, and produced to the highest of standards. If any defect in material or workmanship is found, **Stealth Products** will repair or replace the product at our discretion. Any implied warranty, including the implied warranties of merchantability and fitness for a particular purpose, shall not extend beyond the duration of this warranty. **Stealth Products** does not warrant damage due to, but not limited to: Misuse, abuse, or misapplication of product, and/or modification of product without written approval from **Stealth Products, LLC**. Any alteration or lack of serial number, where applicable, will automatically void all warranty.

Stealth Products, LLC is liable for replacement parts only. **Stealth Products, LLC** is not liable for any incurred labor costs.

Stealth Products warrants against failure due to defective materials or workmanship:

Covers: 2 years
Hardware: 5 years
Electronics: 3 years

In the event of a product failure covered by our warranty, please follow the procedures outlined below:

Call **Stealth Products** at (512) 715-9995 or toll free at (800) 965-9229.

Request a Return Authorization (RA) form from the Returns Department and follow the documentation instructions.

You can download additional copies of this manual by accessing the **Stealth** website (www.stlpro.site/stealth-docs) and searching "TWADD for Invacare" in the search bar at the top of the page.

Supplier Reference

Supplier:	
Telephone:	
Address:	
Purchase Date:	
Model:	

Warning Labels

Warnings are included for the safety of the user, client, operator, and property. Please read and understand what the signal words **DANGER**, **WARNING**, **CAUTION**, **NOTICE**, and **SAFETY** mean, and how they could affect the user, those around the user, and property.



DANGER

Identifies an **imminent** situation which, if not avoided, may result in **severe injury, death, and property damage**.



WARNING

Identifies a **potential** situation which, if not avoided, may result in **severe injury, death, and property damage**.



CAUTION

Identifies a **potential** situation which, if not avoided, may result in **minor to moderate injury and property damage**.

NOTICE

Identifies important information not related to injury, but possible **property damage**.

SAFETY

Indicates steps or instructions for safe practices, reminders of safe procedures, or important safety equipment that may be necessary.

Limited Liability

Stealth Products, LLC accepts no liability for personal injury or damage to property that may arise from the failure of the user or other persons to follow the recommendations, warnings, and instructions in this manual.

Stealth Products does not hold responsibility for final integration of final assembly of product to end user. **Stealth Products** is not liable for user death or injury.

Testing

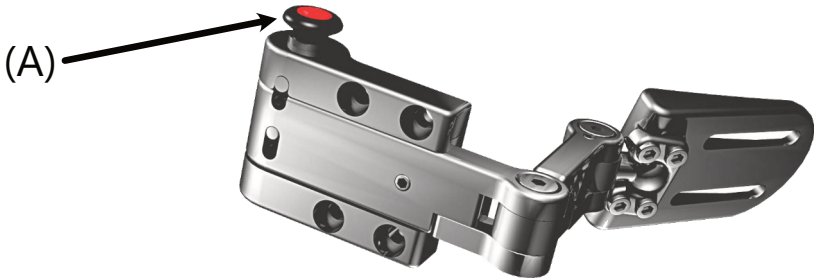
Initial setup and driving should be done in an open area free of obstacles until the user is fully capable of driving safely.

Installation Instructions

Operating Adductors

To operate the **The World's Best Adductors**:

1. Depress the quick release button (A).
2. The adductor will swing away 180° into an open, locked position.
3. Depress the quick release button again to return the swing-away arm to the closed, locked position.



NOTICE

To adjust links, use a 5/32 T-Handle.

Adjusting Adductors

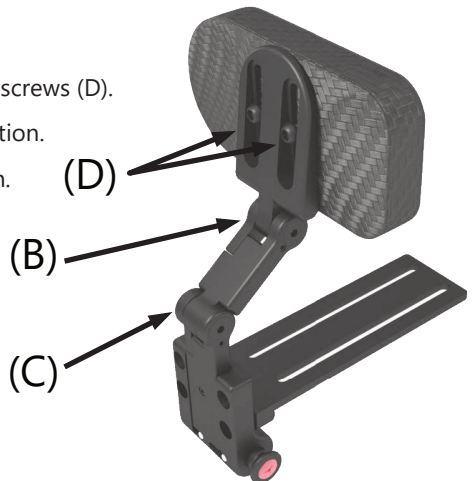
The World's Best Adductors offer three points of adjustment.

To adjust angles (B) and (C):

1. Lightly loosen 1/4-20 x 1" screws.
2. Set desired angles and tighten screws with a 3/16" T-Handle. Do not overtighten.

To adjust pad height:

1. Loosen 1/4-20 x 5/8" button head screws (D).
2. Slide the pad into the desired position.
3. Tighten screws. Do not overtighten.



Torque Specification:

1/4-20 screws - 6.3 lb-ft

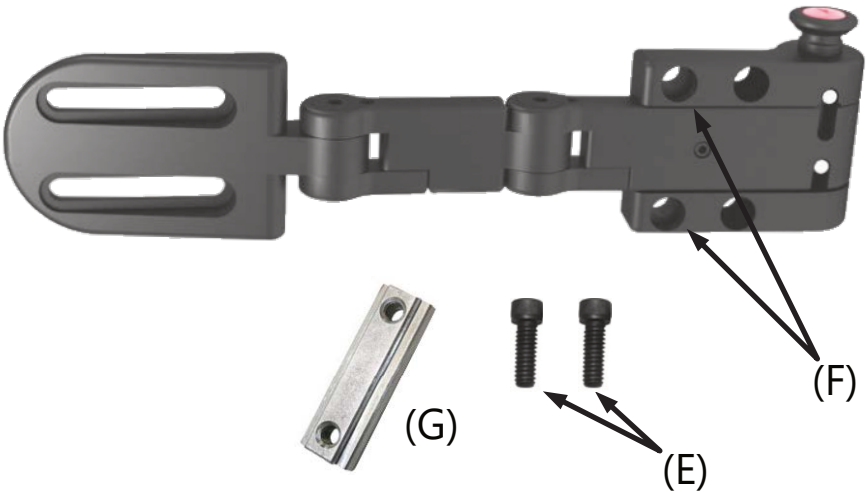
Standard Track Mounting

To install **The World's Best Adductors** on standard track mounting:

1. Select the location for the installation and slide the track nut (G) into the track on the chair.
2. Align two of the four holes (F) with the threaded holes in the track nut (G) and thread the 1/4-20 x 3/4" socket head screws into them.
3. Tighten the screws to secure the adductor to the chair.

To adjust standard track mounting:

1. Loosen the two 1/4-20 x 3/4" socket head screws (F) securing the cane clamp to the cane.
2. Slide the clamp and adductor up or down on the cane to the new position.
3. Tighten the screws to secure the clamp in place.



Dealer Assistance

During first time use by the client, it is advised that the dealer or service technician assists and explains the configuration to the customer (the user and/or the attendant). If needed, the dealer can make final adjustments.



WARNING

The World's Best Adductors should only be fitted by a qualified healthcare professional.

User Testing

It is important that the customer is fully aware of the installation and how the laterals can be adjusted in order to gain the best positioning possible. As a dealer, proceed as follows:

- Explain and show the customer how you have executed the installation, and explain the function.

Have the user test the position of **The World's Best Adductors**:

- Are the adductors in the proper position for the client?
- Can the user safely operate the chair in the position in which they are seated?
- Is the placement of each of the adductors in an optimal position for the user?

If needed, adjust the adductor to the proper position.

Explain to the customer any possible issues and how to address them.

Conditions of Use

The World's Best Adductors are intended for use as installed by the dealer, in accordance to the installation instructions in this manual:

- The foreseen conditions of use are communicated by the dealer or service technician to the user and/or attendant during the first time use.
- If the conditions of use change significantly, please contact your dealer or a qualified service technician to avoid excessive wear and tear or unintended damage.

Cleaning

To wash the covers of the adductors:

- Remove the pad/cover from the adductors.
- Machine wash in cold water on delicate cycle and drip dry.

To wash sheepskin covers:

- Remove the cover from the adductors.
- Machine wash in cold water on delicate cycle (or dry clean), and dry.



WARNING

Do not iron. Do not use bleach

Maintenance

- Periodically check the hardware for loose screws or worn areas.
- Check the pad/cover for any breakdown.
- Gently remove dust and dirt with a damp cloth.
- Periodically add anti-seize compound to the components every 6 months or as necessary.

SAFETY

Repair or replace parts as needed.



© 2023, Stealth Products, LLC

Warranty Information



Home Page



Online User Manual



Stealth Products, LLC · info@stealthproducts.com · www.stealthproducts.com
(800) 965-9229 | (512) 715-9995 | 104 John Kelly Drive, Burnet, TX 78611