

Stealth Products[®]



**Alternative
Drive Controls**



Loc-Line[®] Sip N Puff

Owner's Manual - Maintenance Guide

SNPLOC - Loc-Line Sip N Puff Input Tube

Customer Satisfaction i
 General i

Important Information ii-iii
 Warranty ii
 Supplier Reference ii
 Warning Labels iii
 Limited Liability iii
 Testing iii

Design & Function 1-2
 Intended Use 1
 Tools Required 1
 Parts Breakdown 2

Installation 3-4
 Mounting the Input Tube 3
 Connecting the Sip N Puff Input Tube 3
 Installing the Straw and Vinyl Tubing 4
 Removal of the Straw and Vinyl Tubing 4

Adjustment 5
 Adjusting the Length of the Input Tube 5

First Time Use 6
 Dealer Assistance 6
 User Testing 6
 Conditions of Use 6
 Cleaning 6
 Maintenance 6

Stealth Products is committed to 100% customer satisfaction. Your complete satisfaction is important to us. Please contact us with feedback or suggestions to help us improve the quality and usability of our products.

You may reach us at:



Stealth Products, LLC
104 John Kelly Drive, Burnet, TX 78611

Phone: (512) 715-9995
Fax: (512) 715-9954

Toll Free: (800) 965-9229
Toll Free: (800) 806-1225

info@stealthproducts.com
www.stealthproducts.com



<p>EC REP</p> <p>MDSS GmbH Schiffgraben 41 30175 Hannover Germany</p>	<p>CH REP</p> <p>SODIMED SA Chemin Praz Devant 12 1032 Romanel sur-Lausanne Switzerland</p>	<p>UK Authorized Representative</p> <p>MDSS-UK RP 6 Wilmslow Road, Rusholme Manchester M14 5TP United Kingdom</p>
---	---	---

General

Read and understand all instructions prior to the use of the product. Failure to adhere to instructions and warnings in this document may result in property damage, injury, or death. Product misuse or failure to follow instructions will void the warranty.

Immediately discontinue use if any function is compromised, if parts are missing or loose, or if any component shows signs of excessive wear. Consult with your supplier for repair, adjustment, or replacement.

All persons responsible for fitting, adjustment, and daily use of the devices discussed in these instructions must be familiar with and understand all safety aspects of the devices mentioned. In order for our products to be used successfully, you must read and understand all instructions and warnings, and maintain our products according to our instructions on care and maintenance.

The installation instructions will guide you through this product's options and possibilities. Instructions are written with the expressed intent of use with standard configurations. They also contain important safety and maintenance information, as well as describe possible problems that can arise during use. For further assistance, or more advanced applications, please contact your supplier or **Stealth Products** at (512) 715-9995 or toll free at (800) 965-9229.

Always keep the operating instructions in a safe place so they may be referenced as necessary.

All information, pictures, illustrations, and specifications are based on the product information that was available at the time of printing. Pictures and illustrations shown in these instructions are representative examples and are not intended to be exact depictions of the various parts of the product.

Important Information

CAUTION

These products are designed to be fitted, applied, and installed exclusively by a healthcare professional trained for these purposes. The fitting, application, and installation by a non-qualified individual could result in serious injury.

Warranty

Our products are designed, manufactured, and produced to the highest of standards. If any defect in material or workmanship is found, **Stealth Products** will repair or replace the product at our discretion. Any implied warranty, including the implied warranties of merchantability and fitness for a particular purpose, shall not extend beyond the duration of this warranty. **Stealth Products** does not warrant damage due to, but not limited to: Misuse, abuse, or misapplication of product, and/or modification of product without written approval from **Stealth Products, LLC**. Any alteration or lack of serial number, where applicable, will automatically void all warranty.

Stealth Products, LLC is liable for replacement parts only. **Stealth Products, LLC** is not liable for any incurred labor costs.

Stealth Products warrants against failure due to defective materials or workmanship:

Covers: 2 years
Hardware: 5 years
Electronics: 3 years

In the event of a product failure covered by our warranty, please follow the procedures outlined below:

Call **Stealth Products** at (512) 715-9995 or toll free at (800) 965-9229.

Request a Return Authorization (RA) form from the Returns Department and follow the documentation instructions.

You can download additional copies of this manual by accessing the Stealth website (www.stlpro.site/stealth-docs) and searching "Sip N Puff" in the search bar at the top of the page.

Supplier Reference

Supplier:	
Telephone:	
Address:	
Purchase Date:	
Model:	

Warning Labels

Warnings are included for the safety of the user, client, operator, and property. Please read and understand what the signal words **DANGER**, **WARNING**, **CAUTION**, **NOTICE**, and **SAFETY** mean, and how they could affect the user, those around the user, and property.

DANGER

Identifies an **imminent** situation which, if not avoided, may result in **severe injury, death, and property damage**.

WARNING

Identifies a **potential** situation which, if not avoided, may result in **severe injury, death, and property damage**.

CAUTION

Identifies a **potential** situation which, if not avoided, may result in **minor to moderate injury and property damage**.

NOTICE

Identifies important information not related to injury, but possible **property damage**.

SAFETY

Indicates steps or instructions for safe practices, reminders of safe procedures, or important safety equipment that may be necessary.

Limited Liability

Stealth Products, LLC accepts no liability for personal injury or damage to property that may arise from the failure of the user or other persons to follow the recommendations, warnings, and instructions in this manual.

Stealth Products does not hold responsibility for final integration of final assembly of product to end user. **Stealth Products** is not liable for user death or injury.

Testing

Initial setup and driving should be done in an open area free of obstacles until the user is fully capable of driving safely.

Intended Use

The Loc-Line® Sip N Puff Input Tube is intended to provide a durable, lightweight, flexible, and easily-positioned air pathway to deliver breath commands to a control box on a wheelchair. The Loc-Line Sip N Puff Input Tube is intended for users who have difficulty with or are otherwise unable to utilize joysticks or other tactile input devices to control their mobility device.

Tools Required

4mm Hex Wrench



A 4mm Hex Wrench is required to loosen or tighten the clamp that holds the Sip N Puff Input Tube in place on your wheelchair. Beyond this, no further tools are required to install or maintain the Sip N Puff Input Tube.

There are optional tools that can speed up or simplify adjustments and maintenance on the Sip N Puff Input Tube. The Loc-Line® Pliers* and a small adjustable-end wrench can be used to assist with periodic cleaning, adjustment, or maintenance tasks. See the next section about adjustment or the section that covers maintenance at the end of this manual for suggestions about using these tools properly to adjust or maintain your device.

NOTICE

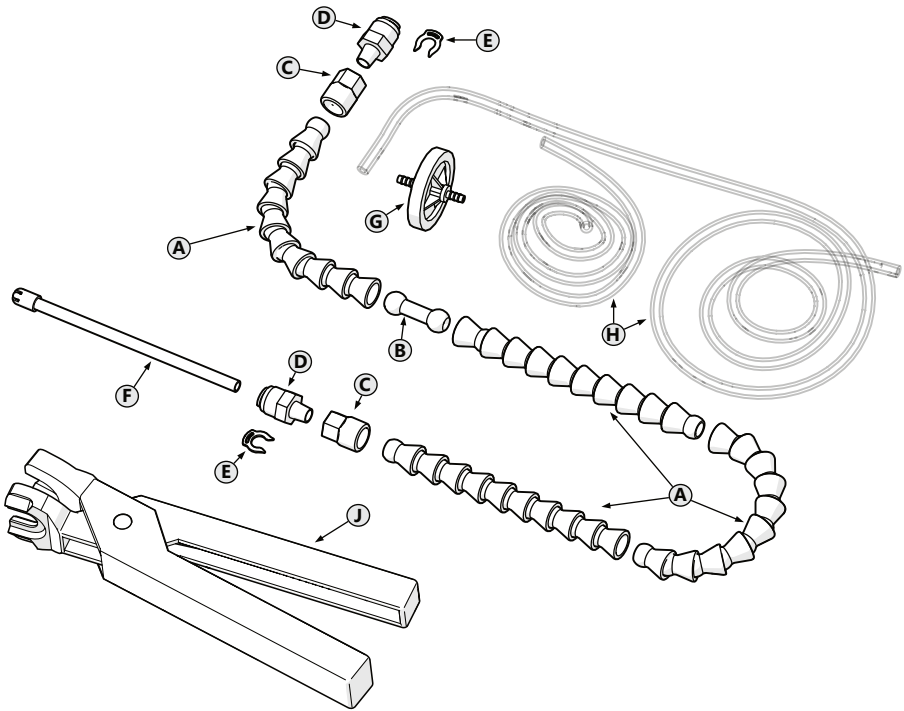
Periodically examine the Sip N Puff Input Tube for damage or wear. If parts are worn or broken, they should be replaced.

SAFETY

The red retention clip is designed to minimize the chance that the straw or clear tubing can be inadvertently removed from the input tube during use. If the clip is missing, the chance of the tubing or straw being unintentionally removed from the fitting will be higher.

* The Loc-Line pliers are not included in the kit, and must be purchased separately. Assembly is possible without the pliers, but is made easier with the pliers.

Parts Breakdown



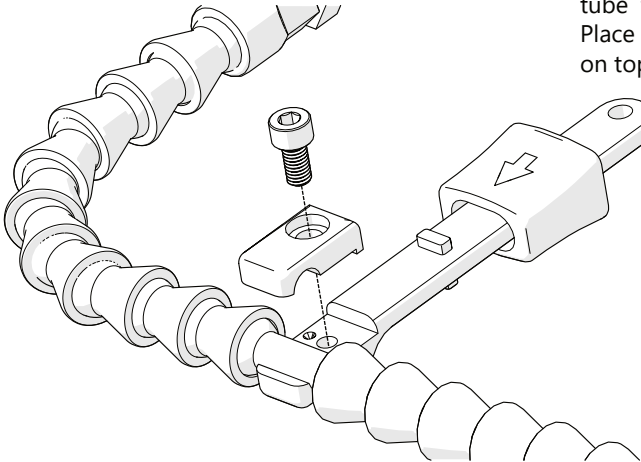
	Description	Replacement Part
A	Loc-Line Tubing, 10 segment (4)	SNPLOC-HS
B	Mounting Barbell for Loc-Line (1)	SNPLOC-BB
C	Loc-Line Tubing Adapter 1/4" to 1/8" NPT (2)	SNPLOC-PTC (Shipped as an assembled unit)
D	Push-to-Connect Fitting for 1/4" Tubing (2)	
E	Retention Clip, Red (2)	
F	Input Straw (1)	SNPLOC-MP (Single) SNPLOC-MP12 (12-pack)
G	In-Line Filter	SNPLOC-IF (Tubing is pre-installed on filter)
H	Flexible Nylon Tubing (24" & 60")	
J	Loc-Line Pliers (sold separately)	SNPLOC-LT

Mounting the Input Tube

The Sip N Puff Input tube is provided in several mounting configurations. All the kits and configurations are dependent upon on a clamp connected to the Mounting Barbell (B).

To mount the clamp to the barbell:

1. Remove the screw holding the clamp secure and lift the clamp section to expose the jaws.
2. Center the barbell in the jaw of the clamp, with the straw pointed forward and the nylon tube to the rear of the chair. Place the other clamp section on top of the barbell.



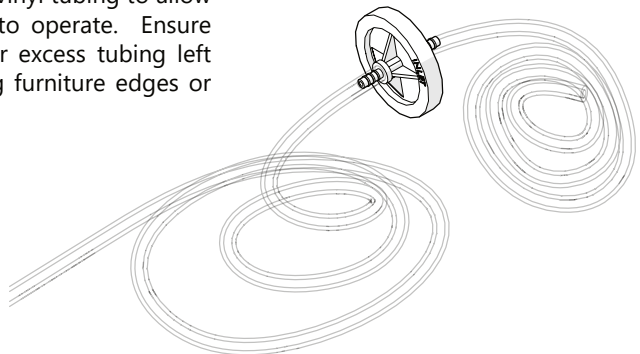
3. Replace the screw and tighten it to secure the clamp on the barbell.

Connecting the Sip N Puff Input Tube

The Sip N Puff input tube connects the control box to the input straw with vinyl tubing. There is a short section of tubing (24") intended for the control box side, and a long section (60") of tubing installed on either side of a directional in-line filter. The long section of tubing should always be installed to the input straw.

This tubing should be routed along the frame of the chair to the control box. Cable ties may be used to secure the tubing to the frame of the chair. Be careful not to crimp the vinyl tubing with the cable ties.

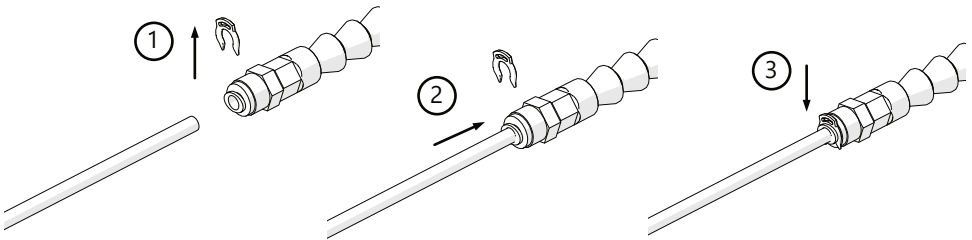
Leave enough slack in the vinyl tubing to allow any swing-away function to operate. Ensure that there are no loops or excess tubing left unsecured that could snag furniture edges or household objects.



Installing the Straw and Vinyl Tubing

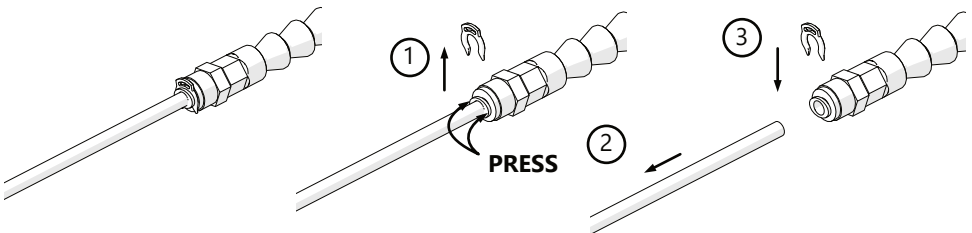
The straw and vinyl tubing attach to the Input Tube via push-to-connect fittings. The straw and tubing are removed and replaced using the same method, as follows:

1. Remove the red retention clip from the fitting. This ring is intended to prevent the accidental release of the straw or vinyl tubing from the input tube.
2. Insert the tubing or straw into the end of the fitting and press firmly until the tubing bottoms out in the fitting. A rubber ring inside the fitting forms the seal, and the tubing or straw must pass through this ring to avoid leakage at the fitting.
3. Pull gently on the tubing or straw to expose the shoulder of the release ring. Slide the red retention clip onto the fitting behind the release ring to secure the connection.



Removal of the Straw or Vinyl Tubing

1. Remove the red retention clip from the push-to-connect fitting (D).
2. Using your thumb and forefinger to depress the release ring against the body of the fitting, grasp the tubing or straw with your other hand and pull it firmly away from the fitting. The tubing or straw will slide out of the fitting. If resistance is encountered or the release ring is difficult to hold in place, a 1/4" open end wrench or other tool that is the same diameter as the tubing or straw may be used to press the ring against the body of the fitting.
3. The red retention clip may be placed back on the fitting to prevent its loss or misplacement during cleaning or other maintenance.

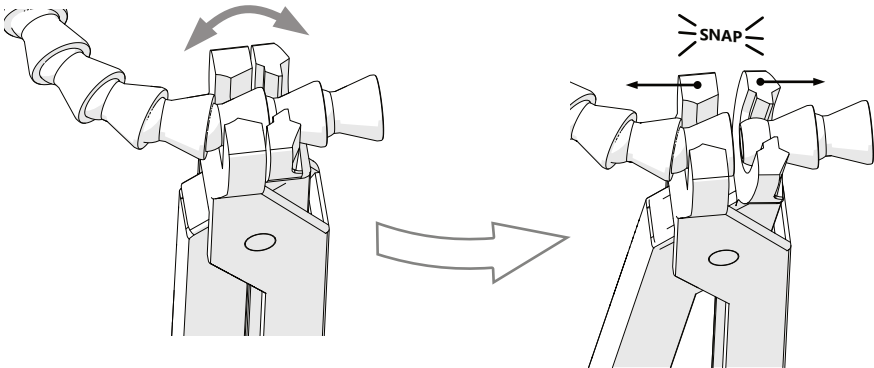
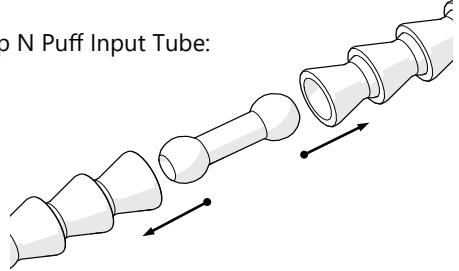


Adjusting the Length of the Input Tube

The initial configuration of the input tube is four sections of ten Loc-Line™ links. Three of these sections are on the front side of the mounting barbell, and one of them is behind the mounting barbell. These are individual links and can be removed or added if more or less length is required on either side.

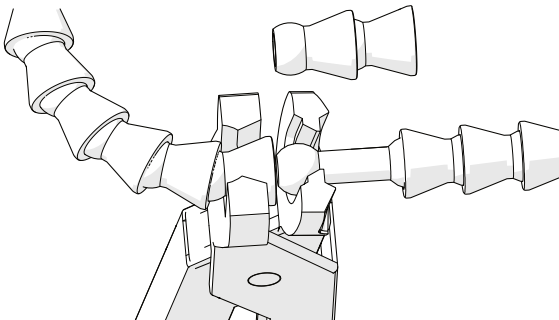
To remove a link or link segment from the Sip N Puff Input Tube:

1. Remove the entire front or back section from the mounting barbell. The section may be removed by pivoting the section on the barbell until it snaps free.



2. Using the Loc-Line pliers*, grasp the input tube section at the joint you wish to separate, as shown in the image above. Place your hand over the joint to control the parts and gently apply force to open the jaws of the pliers. The links should separate with an audible snap.

3. Set the removed segments aside and place the two segments of Sip N Puff Input Tube in the pliers as shown in the image below. Squeeze the handles of the pliers until the tubing snaps together.



* The Loc-Line pliers are not included in the kit and are sold separately. See the Parts Breakdown section on page 2 for the part number.

Dealer Assistance

During first time use by the client, it is advised that the dealer or service technician assists and explains the configuration to the customer (the user and/or the attendant). If needed, the dealer can make final adjustments.

User Testing

It is important that the customer is fully aware of the installation and how the product can be adjusted in order to gain the best positioning possible. As a dealer, proceed as follows:

- Explain and show the client how you have executed the installation, and explain the function.

Have the user test the position of the product:

- Is the Loc-Line Sip N Puff in the proper position for the client?
- Can the user safely operate the chair in the position in which they are seated?
- Is the placement of the Loc-Line Sip N Puff in an optimal position for the client?

Conditions of Use

The Loc-Line Sip N Puff are intended for use as installed by the dealer, in accordance to the installation instructions in this manual.

- The foreseen conditions of use are communicated by the dealer or service technician to the user and/or attendant during the first time use.
- If the conditions of use change significantly, please contact your dealer or a qualified service technician to avoid excessive wear and tear or unintended damage.

Cleaning

Once a week, or as needed, remove the straw and inspect for contamination or damage. If the straw is torn, crimped, or otherwise damaged, replace it with a new one. Regularly clean the straw using warm water and a dish detergent. A soft bristle brush can be used to remove stubborn stains or biofilm. Rinse the straw well with warm water. The straw may be disinfected by soaking in an antiseptic mouthwash for 30 to 60 seconds.

Maintenance

The filter should be replaced if it is found to be soiled or damaged. The clear tubing and filter is replaced as a unit. See the Parts Breakdown on Page 2 for a list of replacement parts available.

If leakage is detected at the push-to-connect fittings, remove the tubing, check for cracks or unevenly cut ends, and re-insert into the fitting. To fully seat the tubing, twist gently while pressing it into the fitting, and it should seat about one-half inch deep.



© 2024, Stealth Products, LLC

Warranty Information



Home Page



Online User Manual



Stealth Products, LLC · info@stealthproducts.com · www.stealthproducts.com
(800) 965-9229 | (512) 715-9995 | 104 John Kelly Drive, Burnet, TX 78611