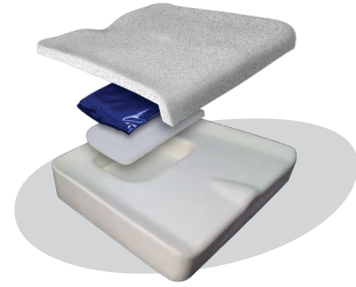




# Stealth Spectrum Gel SPP Cushion Order Form

104 John Kelly Drive, Burnet, TX 78611 | Phone: 800-965-9229 | Fax: 800-806-1225 | Email: info@stealthproducts.com

Account Number: \_\_\_\_\_ Date: \_\_\_\_\_  
 Provider Name: \_\_\_\_\_  
 Contact: \_\_\_\_\_  
 Phone: \_\_\_\_\_ Fax: \_\_\_\_\_  
 Email: \_\_\_\_\_  
 PO Number: \_\_\_\_\_  
 Marked for: \_\_\_\_\_  
 Ship to Address: \_\_\_\_\_  
 City: \_\_\_\_\_ State: \_\_\_\_\_ Zip: \_\_\_\_\_



### Stealth Spectrum Gel SPP Cushion specifications:

- Skin Protection and Positioning.
- Low contour base foam with sacral relief, blue XXSoft FRG foam topper (sizes 22" W and greater, green MedSoft FRG topper)
- Twin cell ultra-lightweight viscous gel insert in ischial well.
- Weight capacity: 14" W: 175 lbs., 16-21" W: 350 lbs., 22+" W: 500 lbs.
- Coolcore® technology cover\*.

\* Coolcore® technology, a chemical free, four-way stretch material that offers moisture wicking, moisture transportation, and moisture evaporation properties.

## INTRODUCTION

This form is interactive when viewed with [Adobe Acrobat Reader®](#) and may not function correctly if opened with applications other than Acrobat. Complete the form by placing checks in the desired boxes and provide information in the interactive fields. Buttons shown at the bottom of the form may be utilized to print or submit the order form through a desktop email application. To email via a web-based application, please 'Save As' and attach the PDF to your email.

HCPCS codes provided should not be considered as legal advice and do not guarantee reimbursement. DME providers are responsible for determining the appropriate billing codes when submitting for insurance reimbursement. Payer coding, coverage, and bundling guidelines may apply. All prices are MSRP. Prices, specifications, part numbers, and availability are subject to change without notice. Prices and part numbers as shown are only available when configured as a complete power chair. Please contact technical service for accurate parts ordering.

## 1. CUSHION SIZE SELECTION

The XXYY portion of all part numbers on this page directly relate to the dimensions of the cushion, where XX represents the width and YY represents the depth. For example, a 16" wide and 18" deep cushion would be ST-SPCGSPP1618. Available sizes are shown on the charts below.

Spectrum Gel SPP Cushion, 14"-20" Wide, E2607..... \$507  
 Spectrum Gel SPP Cushion, 22"-24" Wide, E2608..... \$585

Cushion Part: ST-SPCGSPPXXYY

Cushion Width: \_\_\_\_\_

Cushion Depth: \_\_\_\_\_

|       |     | Width |     |     |     |     |     |     |     |
|-------|-----|-------|-----|-----|-----|-----|-----|-----|-----|
|       |     | 14"   | 16" | 17" | 18" | 19" | 20" | 22" | 24" |
| Depth | 15" | —     | —   | —   | —   | —   | —   | —   | —   |
|       | 16" | —     | —   | —   | —   | —   | —   | —   | —   |
|       | 17" | —     | —   | —   | —   | —   | —   | —   | —   |
|       | 18" | —     | —   | —   | —   | —   | —   | —   | —   |
|       | 19" | —     | —   | —   | —   | —   | —   | —   | —   |
|       | 20" | —     | —   | —   | —   | —   | —   | —   | —   |
|       | 21" | —     | —   | —   | —   | —   | —   | —   | —   |
|       | 22" | —     | —   | —   | —   | —   | —   | —   | —   |
|       | 24" | —     | —   | —   | —   | —   | —   | —   | —   |
| 26"   | —   | —     | —   | —   | —   | —   | —   | —   |     |

## 2. Alternate Fluid Proof Liner

The Spectrum Gel SPP Cushion is standard with a Fluid Proof Urethane Liner but can be substituted with a Fluid Proof Polyurethane Liner. A credit will be applied.

### 2.1 Polyurethane Liner Selection

#### 2.a. Install Polyurethane Liner

Credit for Polyurethane as Alternate Liner, up to 20"W ..... -\$21  
 Part: PTOINDV3892

Credit for Polyurethane as Alternate Liner, 21"-24"W ..... -\$21  
 Part: PTOINDV3919

#### 2.b Polyurethane Liner selection

| Cushion Size | Part            | MSRP | Cushion Size | Part            | MSRP | Cushion Size | Part            | MSRP |
|--------------|-----------------|------|--------------|-----------------|------|--------------|-----------------|------|
| 14"W x 18"D  | PUL1709030-1418 | \$58 | 16"W x 16"D  | PUL1709030-1616 | \$58 | 16"W x 18"D  | PUL1709030-1618 | \$58 |
| 16"W x 15"D  | PUL1709030-1615 | \$58 | 16"W x 17"D  | PUL1709030-1617 | \$58 | 16"W x 19"D  | PUL1709030-1619 | \$58 |

Fluid Proof Liner Selection continued on next page.

**2. Alternate Fluid Proof Liner continued**

| Cushion Size    | Part                 | MSRP | Cushion Size    | Part                 | MSRP | Cushion Size   | Part                 | MSRP |
|-----------------|----------------------|------|-----------------|----------------------|------|----------------|----------------------|------|
| 16"W x 20"D...  | PUL1709030-1620..... | \$58 | 19"W x 16"D.... | PUL1709030-1916..... | \$58 | 22"W x 18"D... | PUL1709030-2218..... | \$79 |
| 17"W x 16"D.... | PUL1709030-1716..... | \$58 | 19"W x 17"D.... | PUL1709030-1917..... | \$58 | 22"W x 19"D... | PUL1709030-2219..... | \$79 |
| 17"W x 17"D.... | PUL1709030-1717..... | \$58 | 19"W x 18"D.... | PUL1709030-1918..... | \$58 | 22"W x 20"D... | PUL1709030-2220..... | \$79 |
| 17"W x 18"D.... | PUL1709030-1718..... | \$58 | 19"W x 19"D.... | PUL1709030-1919..... | \$58 | 22"W x 22"D... | PUL1709030-2222..... | \$79 |
| 17"W x 19"D.... | PUL1709030-1719..... | \$58 | 19"W x 20"D...  | PUL1709030-1920..... | \$58 | 22"W x 24"D... | PUL1709030-2224..... | \$79 |
| 17"W x 20"D...  | PUL1709030-1720..... | \$58 | 20"W x 16"D...  | PUL1709030-2016..... | \$58 | 24"W x 16"D... | PUL1709030-2416..... | \$79 |
| 18"W x 16"D.... | PUL1709030-1816..... | \$58 | 20"W x 18"D...  | PUL1709030-2018..... | \$58 | 24"W x 18"D... | PUL1709030-2418..... | \$79 |
| 18"W x 17"D.... | PUL1709030-1817..... | \$58 | 20"W x 19"D...  | PUL1709030-2019..... | \$58 | 24"W x 19"D... | PUL1709030-2419..... | \$79 |
| 18"W x 18"D.... | PUL1709030-1818..... | \$58 | 20"W x 20"D...  | PUL1709030-2020..... | \$58 | 24"W x 20"D... | PUL1709030-2420..... | \$79 |
| 18"W x 19"D.... | PUL1709030-1819..... | \$58 | 20"W x 21"D...  | PUL1709030-2021..... | \$58 | 24"W x 21"D... | PUL1709030-2421..... | \$79 |
| 18"W x 20"D...  | PUL1709030-1820..... | \$58 | 20"W x 22"D...  | PUL1709030-2022..... | \$58 | 24"W x 22"D... | PUL1709030-2422..... | \$79 |
| 18"W x 21"D...  | PUL1709030-1821..... | \$58 | 20"W x 24"D...  | PUL1709030-2024..... | \$58 | 24"W x 24"D... | PUL1709030-2424..... | \$79 |
| 18"W x 22"D...  | PUL1709030-1822..... | \$58 | 22"W x 16"D...  | PUL1709030-2216..... | \$79 | 24"W x 26"D... | PUL1709030-2426..... | \$79 |
| 18"W x 24"D...  | PUL1709030-1824..... | \$58 |                 |                      |      |                |                      |      |

**3. Alternate Cushion Cover**

The Spectrum Gel SPP cushion is standard with a Coolcore cover which can be substituted with a Mesh or Stealth Tek Cover. A credit will be applied.

**3.1 Mesh Cover Selection**

**3.1a. Install Mesh Cover**

Credit for Mesh as Alternate Cover .....-\$105  
 Part: PTOINDV3863

**3.1b. Mesh Cover Selection**

| Cushion Size   | Part                | MSRP  | Cushion Size   | Part                | MSRP  | Cushion Size   | Part                | MSRP  |
|----------------|---------------------|-------|----------------|---------------------|-------|----------------|---------------------|-------|
| 14"W x 18"D... | SPCGSPP-MBLK1418... | \$105 | 18"W x 20"D... | SPCGSPP-MBLK1820... | \$105 | 20"W x 24"D... | SPCGSPP-MBLK2024... | \$105 |
| 16"W x 15"D... | SPCGSPP-MBLK1615... | \$105 | 18"W x 21"D... | SPCGSPP-MBLK1821... | \$105 | 22"W x 16"D... | SPCGSPP-MBLK2216... | \$105 |
| 16"W x 16"D... | SPCGSPP-MBLK1616... | \$105 | 18"W x 22"D... | SPCGSPP-MBLK1822... | \$105 | 22"W x 18"D... | SPCGSPP-MBLK2218... | \$105 |
| 16"W x 17"D... | SPCGSPP-MBLK1617... | \$105 | 18"W x 24"D... | SPCGSPP-MBLK1824... | \$105 | 22"W x 19"D... | SPCGSPP-MBLK2219... | \$105 |
| 16"W x 18"D... | SPCGSPP-MBLK1618... | \$105 | 19"W x 16"D... | SPCGSPP-MBLK1916... | \$105 | 22"W x 20"D... | SPCGSPP-MBLK2220... | \$105 |
| 16"W x 19"D... | SPCGSPP-MBLK1619... | \$105 | 19"W x 17"D... | SPCGSPP-MBLK1917... | \$105 | 22"W x 22"D... | SPCGSPP-MBLK2222... | \$105 |
| 16"W x 20"D... | SPCGSPP-MBLK1620... | \$105 | 19"W x 18"D... | SPCGSPP-MBLK1918... | \$105 | 22"W x 24"D... | SPCGSPP-MBLK2224... | \$105 |
| 17"W x 16"D... | SPCGSPP-MBLK1716... | \$105 | 19"W x 19"D... | SPCGSPP-MBLK1919... | \$105 | 24"W x 16"D... | SPCGSPP-MBLK2416... | \$105 |
| 17"W x 17"D... | SPCGSPP-MBLK1717... | \$105 | 19"W x 20"D... | SPCGSPP-MBLK1920... | \$105 | 24"W x 18"D... | SPCGSPP-MBLK2418... | \$105 |
| 17"W x 18"D... | SPCGSPP-MBLK1718... | \$105 | 20"W x 16"D... | SPCGSPP-MBLK2016... | \$105 | 24"W x 19"D... | SPCGSPP-MBLK2419... | \$105 |
| 17"W x 19"D... | SPCGSPP-MBLK1719... | \$105 | 20"W x 18"D... | SPCGSPP-MBLK2018... | \$105 | 24"W x 20"D... | SPCGSPP-MBLK2420... | \$105 |
| 17"W x 20"D... | SPCGSPP-MBLK1720... | \$105 | 20"W x 19"D... | SPCGSPP-MBLK2019... | \$105 | 24"W x 21"D... | SPCGSPP-MBLK2421... | \$105 |
| 18"W x 16"D... | SPCGSPP-MBLK1816... | \$105 | 20"W x 20"D... | SPCGSPP-MBLK2020... | \$105 | 24"W x 22"D... | SPCGSPP-MBLK2422... | \$105 |
| 18"W x 17"D... | SPCGSPP-MBLK1817... | \$105 | 20"W x 21"D... | SPCGSPP-MBLK2021... | \$105 | 24"W x 24"D... | SPCGSPP-MBLK2424... | \$105 |
| 18"W x 18"D... | SPCGSPP-MBLK1818... | \$105 | 20"W x 22"D... | SPCGSPP-MBLK2022... | \$105 | 24"W x 26"D... | SPCGSPP-MBLK2426... | \$105 |
| 18"W x 19"D... | SPCGSPP-MBLK1819... | \$105 |                |                     |       |                |                     |       |

**3.2 Stealth Tek Cover Selection**

**3.2a. Install Stealth Tek Cover**

Credit for Stealth Tek as Alternate Cover .....-\$105  
 Part: PTOINDV3871

**3.2b. Stealth Tek Cover Selection**

| Cushion Size   | Part                | MSRP  | Cushion Size   | Part                | MSRP  | Cushion Size   | Part                | MSRP  |
|----------------|---------------------|-------|----------------|---------------------|-------|----------------|---------------------|-------|
| 14"W x 18"D... | SPCGSPP-TBLK1418... | \$105 | 16"W x 19"D... | SPCGSPP-TBLK1619... | \$105 | 17"W x 19"D... | SPCGSPP-TBLK1719... | \$105 |
| 16"W x 15"D... | SPCGSPP-TBLK1615... | \$105 | 16"W x 20"D... | SPCGSPP-TBLK1620... | \$105 | 17"W x 20"D... | SPCGSPP-TBLK1720... | \$105 |
| 16"W x 16"D... | SPCGSPP-TBLK1616... | \$105 | 17"W x 16"D... | SPCGSPP-TBLK1716... | \$105 | 18"W x 16"D... | SPCGSPP-TBLK1816... | \$105 |
| 16"W x 17"D... | SPCGSPP-TBLK1617... | \$105 | 17"W x 17"D... | SPCGSPP-TBLK1717... | \$105 | 18"W x 17"D... | SPCGSPP-TBLK1817... | \$105 |
| 16"W x 18"D... | SPCGSPP-TBLK1618... | \$105 | 17"W x 18"D... | SPCGSPP-TBLK1718... | \$105 | 18"W x 18"D... | SPCGSPP-TBLK1818... | \$105 |

Alternate Cushion Cover Selection continued on the following page.

### 3. Alternate Cushion Cover continued

| Cushion Size   | Part             | MSRP     | Cushion Size   | Part             | MSRP     | Cushion Size   | Part             | MSRP     |
|----------------|------------------|----------|----------------|------------------|----------|----------------|------------------|----------|
| 18"W x 19"D... | SPCGSPP-TBLK1819 | ...\$105 | 20"W x 18"D... | SPCGSPP-TBLK2018 | ...\$105 | 22"W x 22"D... | SPCGSPP-TBLK2222 | ...\$105 |
| 18"W x 20"D... | SPCGSPP-TBLK1820 | ...\$105 | 20"W x 19"D... | SPCGSPP-TBLK2019 | ...\$105 | 22"W x 24"D... | SPCGSPP-TBLK2224 | ...\$105 |
| 18"W x 21"D... | SPCGSPP-TBLK1821 | ...\$105 | 20"W x 20"D... | SPCGSPP-TBLK2020 | ...\$105 | 24"W x 16"D... | SPCGSPP-TBLK2416 | ...\$105 |
| 18"W x 22"D... | SPCGSPP-TBLK1822 | ...\$105 | 20"W x 21"D... | SPCGSPP-TBLK2021 | ...\$105 | 24"W x 18"D... | SPCGSPP-TBLK2418 | ...\$105 |
| 18"W x 24"D... | SPCGSPP-TBLK1824 | ...\$105 | 20"W x 22"D... | SPCGSPP-TBLK2022 | ...\$105 | 24"W x 19"D... | SPCGSPP-TBLK2419 | ...\$105 |
| 19"W x 16"D... | SPCGSPP-TBLK1916 | ...\$105 | 20"W x 24"D... | SPCGSPP-TBLK2024 | ...\$105 | 24"W x 20"D... | SPCGSPP-TBLK2420 | ...\$105 |
| 19"W x 17"D... | SPCGSPP-TBLK1917 | ...\$105 | 22"W x 16"D... | SPCGSPP-TBLK2216 | ...\$105 | 24"W x 21"D... | SPCGSPP-TBLK2421 | ...\$105 |
| 19"W x 18"D... | SPCGSPP-TBLK1918 | ...\$105 | 22"W x 18"D... | SPCGSPP-TBLK2218 | ...\$105 | 24"W x 22"D... | SPCGSPP-TBLK2422 | ...\$105 |
| 19"W x 19"D... | SPCGSPP-TBLK1919 | ...\$105 | 22"W x 19"D... | SPCGSPP-TBLK2219 | ...\$105 | 24"W x 24"D... | SPCGSPP-TBLK2424 | ...\$105 |
| 19"W x 20"D... | SPCGSPP-TBLK1920 | ...\$105 | 22"W x 20"D... | SPCGSPP-TBLK2220 | ...\$105 | 24"W x 26"D... | SPCGSPP-TBLK2426 | ...\$105 |
| 20"W x 16"D... | SPCGSPP-TBLK2016 | ...\$105 |                |                  |          |                |                  |          |

### 4. Add Solid Base

The Stealth Spectrum Gel SPP Cushion is available with an optional ABS Flat Rigidizer or ACM Rigidizer (For use with manual wheelchair only). 22" width and greater cushions include a flat rigidizer standard.

#### 4.1 ABS Flat Rigidizer

| Cushion Size     | Part                 | MSRP | Cushion Size     | Part                 | MSRP | Cushion Size     | Part                 | MSRP |
|------------------|----------------------|------|------------------|----------------------|------|------------------|----------------------|------|
| 14"W x 18"D..... | DWR1010E190I.....    | \$58 | 17"W x 20"D..... | DWR1010E244J.....    | \$58 | 19"W x 18"D..... | MEC1804152-1917..... | \$58 |
| 16"W x 15"D..... | MEC1804152-1615..... | \$58 | 18"W x 16"D..... | DWR1010E192G.....    | \$58 | 19"W x 19"D..... | MEC1804152-1919..... | \$58 |
| 16"W x 16"D..... | DWR1010E191G.....    | \$58 | 18"W x 17"D..... | DWR1010E192G.....    | \$58 | 19"W x 20"D..... | MEC1804152-1919..... | \$58 |
| 16"W x 17"D..... | DWR1010E191G.....    | \$58 | 18"W x 18"D..... | DWR1010E192I.....    | \$58 | 20"W x 16"D..... | DWR1010E193G.....    | \$58 |
| 16"W x 18"D..... | DWR1010E191I.....    | \$58 | 18"W x 19"D..... | DWR1010E192I.....    | \$58 | 20"W x 18"D..... | DWR1010E193I.....    | \$58 |
| 16"W x 19"D..... | DWR1010E191I.....    | \$58 | 18"W x 20"D..... | DWR1010E192K.....    | \$58 | 20"W x 19"D..... | DWR1010E193I.....    | \$58 |
| 16"W x 20"D..... | DWR1010E191K.....    | \$58 | 18"W x 21"D..... | DWR1010E192K.....    | \$58 | 20"W x 20"D..... | DWR1010E193K.....    | \$58 |
| 17"W x 16"D..... | MEC1804152-1715..... | \$58 | 18"W x 22"D..... | DWR1010E192M.....    | \$58 | 20"W x 21"D..... | DWR1010E193K.....    | \$58 |
| 17"W x 17"D..... | DWR1010E234H.....    | \$58 | 18"W x 24"D..... | DWR1010E192O.....    | \$58 | 20"W x 22"D..... | DWR1010E193M.....    | \$58 |
| 17"W x 18"D..... | DWR1010E234H.....    | \$58 | 19"W x 16"D..... | MEC1804152-1915..... | \$58 | 20"W x 24"D..... | DWR1010E193O.....    | \$58 |
| 17"W x 19"D..... | DWR1010E234J.....    | \$58 | 19"W x 17"D..... | MEC1804152-1917..... | \$58 |                  |                      |      |

#### 4.2 ACM Rigidizer

For use on Manual Wheelchairs Only

| Cushion Size     | Part           | MSRP        | Cushion Size     | Part           | MSRP        | Cushion Size     | Part           | MSRP        |
|------------------|----------------|-------------|------------------|----------------|-------------|------------------|----------------|-------------|
| 16"W x 16"D..... | CUS142467-1616 | ... \$100   | 17"W x 20"D..... | CUS142466      | ..... \$100 | 19"W x 18"D....  | CUS142465-2018 | ... \$100   |
| 16"W x 17"D..... | CUS142467-1616 | .... \$100  | 18"W x 16"D....  | CUS142466-1816 | .... \$100  | 19"W x 19"D....  | CUS142465-2018 | ... \$100   |
| 16"W x 18"D..... | CUS142467      | ..... \$100 | 18"W x 17"D....  | CUS142466-1816 | .... \$100  | 19"W x 20"D..... | CUS142465      | ..... \$100 |
| 16"W x 19"D..... | CUS142467      | ..... \$100 | 18"W x 18"D....  | CUS142466-1818 | .... \$100  | 20"W x 18"D....  | CUS142465-2018 | ... \$100   |
| 16"W x 20"D..... | CUS142467      | ..... \$100 | 18"W x 19"D....  | CUS142466-1818 | .... \$100  | 20"W x 19"D....  | CUS142465-2018 | ... \$100   |
| 17"W x 16"D....  | CUS142466-1816 | .... \$100  | 18"W x 20"D..... | CUS142466      | ..... \$100 | 20"W x 20"D..... | CUS142465      | ..... \$100 |
| 17"W x 17"D....  | CUS142466-1816 | .... \$100  | 18"W x 21"D..... | CUS142466      | ..... \$100 | 20"W x 21"D..... | CUS142465      | ..... \$100 |
| 17"W x 18"D....  | CUS142466-1818 | .... \$100  | 18"W x 22"D..... | CUS142466      | ..... \$100 | 20"W x 22"D..... | CUS142465      | ..... \$100 |
| 17"W x 19"D....  | CUS142466-1818 | .... \$100  |                  |                |             |                  |                |             |

