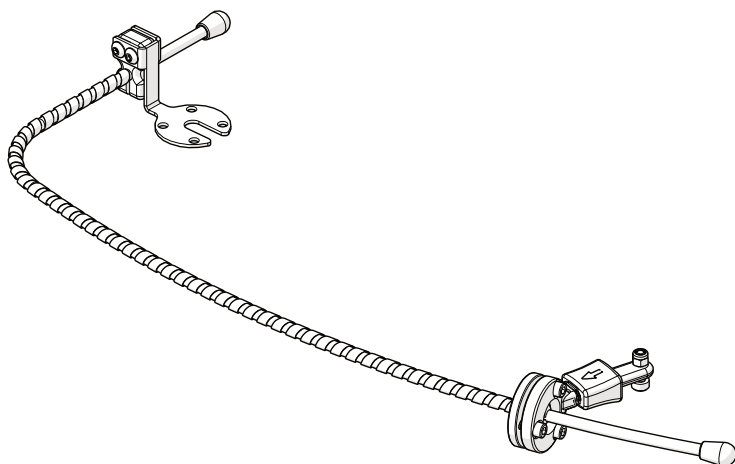




Install Manual

Stealth Products

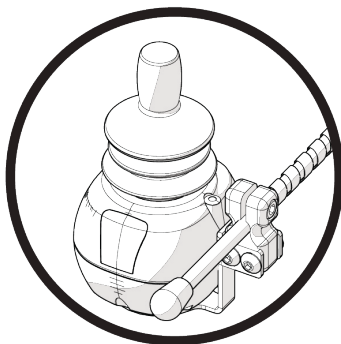
Mounting Hardware



SM660-M

Swing Away Mount

For SM Series Chin or ARMS260 Mounts



INSTALLATION INSTRUCTIONS FOR

Ppermobil: Compact Joystick, CJA, CJL, Mini Joystick

Stealth Products: IDM-ALLROUND-9,
IDM-ARLITE-9

Mo-Vis: P002-71 All-Round Joystick
P002-72 All Round Lite Joystick

Stealth Commitment

1.1

Stealth Products strives for 100% customer satisfaction. Your complete satisfaction is important. Please contact us with feedback or suggested changes that will help improve the quality and usability of our swing away hardware. You may reach us at:



Stealth Products, LLC

104 John Kelly Drive, Burnet, TX 78611

Phone: (512) 715-9995
Fax: (512) 715-9954

Toll Free: (800) 965-9229
Toll Free: (800) 806-1225

info@stealthproducts.com
www.stealthproducts.com

<div><div>EU</div><div>REP</div></div> <div><div>PRIDE MOBILITY PRODUCTS EUROPE BV</div><div>De Zwaan 3 1601 MS Enkhuizen The Netherlands</div></div>	<div><div>CH</div><div>REP</div></div> <div><div>SODIMED SA</div><div>Chemin Praz Devant 12 1032 Romanel sur-Lausanne Switzerland</div></div>	<div><div>UK Authorized Representative</div><div><div>PRIDE MOBILITY PRODUCTS LTD.</div><div>32 Wedgwood Road, Bicester, Oxfordshire OX26 4UL United Kingdom</div></div></div> <div><div>UK</div><div>CA</div></div>
---	---	--

Installation Date: _____

Dealer: _____




Dealer Stamp:

Serial Number:

Warning Labels

2.1

Warnings are included for the safety of the user, client, operator and property. Please read and understand what the signal words **SAFETY, NOTICE, CAUTION, WARNING** and **DANGER** mean, how they could affect the user, those around the user, and property.

 DANGER	Identifies an imminent situation which (if not avoided) will result in severe injury, death, and property damage.
 WARNING	Identifies a potential situation which (if not avoided) will result in severe injury, death, and property damage.
 CAUTION	Identifies a potential situation which (if not avoided) will result in minor to moderate injury, and property damage.
NOTICE	Identifies important information not related to injury, but possible property damage.
SAFETY	Indicates steps or instructions for safe practices, reminders of safe procedures, or important safety equipment that may be necessary.

Limited Liability

2.2

Stealth Products, LLC accepts no liability for personal injury or damage to property that may arise from the failure of the user or other persons to follow the recommendations, warnings, and instructions in this manual.

Stealth Products does not hold responsibility of final integration of final assembly of product to end user. Stealth Products is not liable for user death of injury.

Testing

2.3

Initial setup and driving should be done in an open area free of obstacles until the user is fully capable of driving safely.

The hardware should always be tested without any person sitting in the wheelchair, and until every alteration of the physical installation or adjustment of the joystick is complete.

1.0 Customer Satisfaction i

1.1 Stealth Commitment i

2.0 Warnings ii

2.1 Warning Labels ii

2.2 Limited Liability ii

2.3 Testing ii

3.0 Table of Contents..... iii

4.0 Parts and Accessories 1

4.1 Mounting Hardware Parts 1

4.2 Screws and Tools 1

5.0 Installation Instructions 2

5.1 Installing Joystick 2

5.2 Joystick Mount Install 2

5.3 Mounting Height Adjustment 3

5.4 Vertical Alignment 4

5.5 Installing Swing Away System or ARMS260 Rod 4

6.0 Functioning 5

6.1 Basic Functioning 5

7.0 Maintenance 6

7.1 Maintenance 6

7.2 Cleaning 6

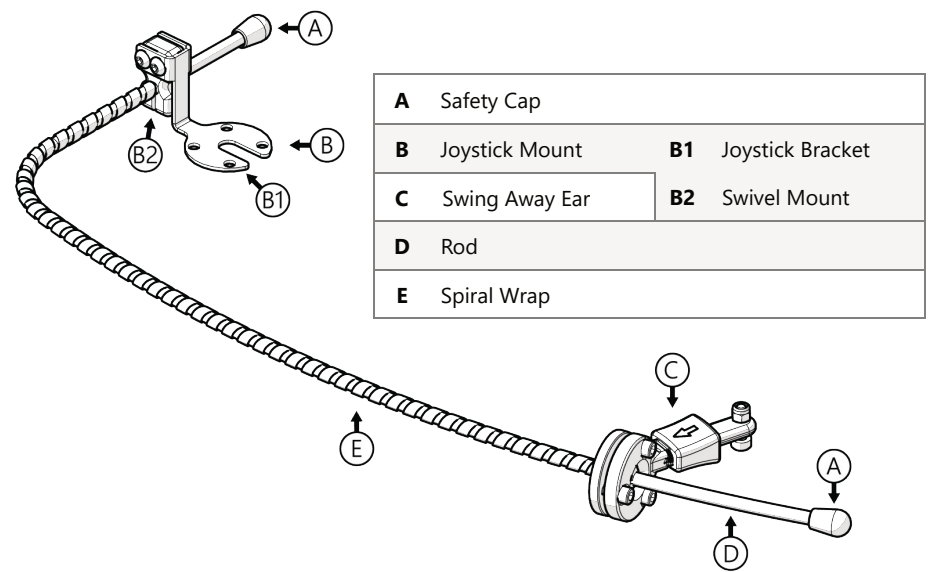
7.3 Disinfecting 6

8.0 Warranty 7

8.1 In Case of Product Failure 7

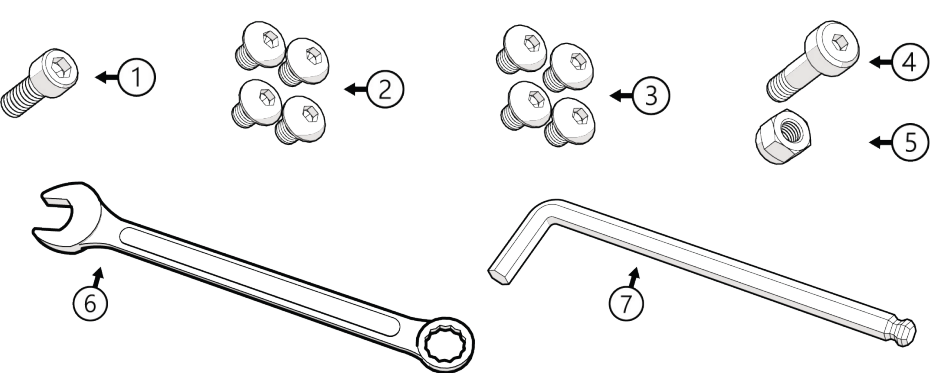
Mounting Hardware Parts

4.1



Screws and Tools

4.2



	Description	Qty
1	10-24 x 1/2" SHS (B2) Clamp Mount Screw and (C) Swing Away Ear Ball Screws	4
2	10-32 x 1/4" BHS (B) Bracket Screws	4
3	M4 x 0.7 x 10mm (B1) Joystick Bracket Screws ¹	4
4	M5 x 0.8 x 18mm (C) Swing Away Ear Shoulder Screw	1
5	M5 Lock Nut	1
6	M5 Wrench ²	
7	5/32" Allen Wrench (Hex Key) ²	

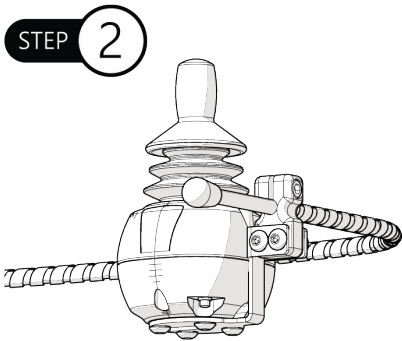
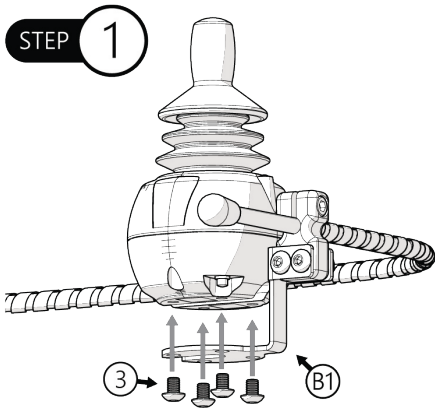
1. Included only with IDM-ALLROUND-9/IDM-ARLITE-9
2. Not Included

⚠ CAUTION

DO NOT OVER TIGHTEN SCREWS. This could cause wearing of screws or joystick threads, causing the client to lose efficient control.

Installing Joystick

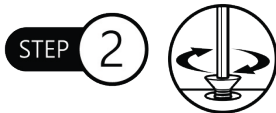
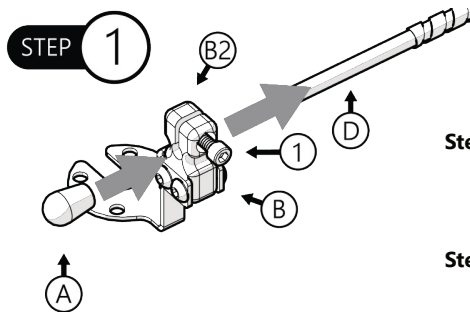
5.1



- Step 1.** Use screws (3) provided by manufacturer. Ensure joystick is facing right direction and position screws accordingly, crossing joystick bracket (B1) to joystick slots.
- Step 2.** Tighten screws (3)

Joystick Mount Install

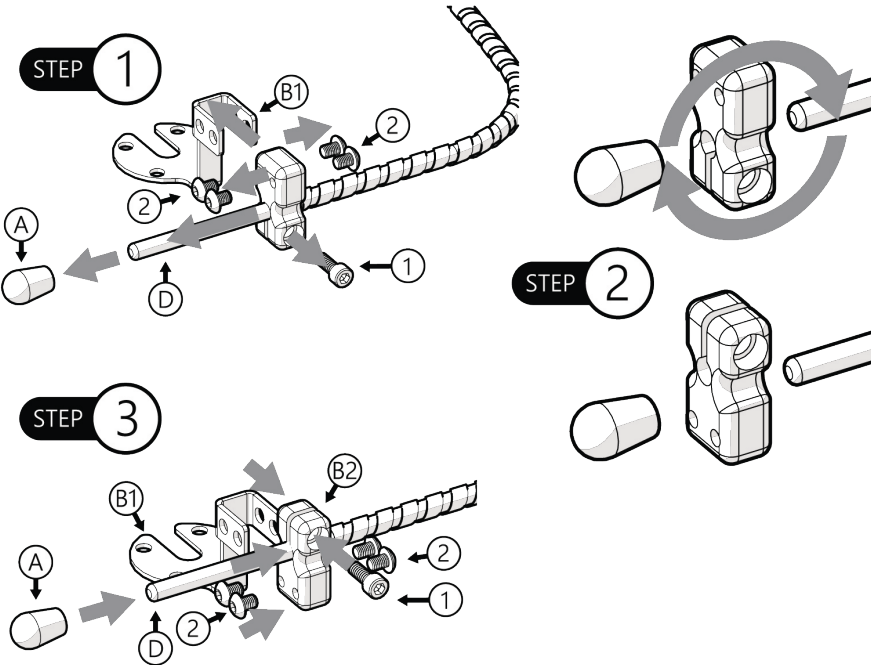
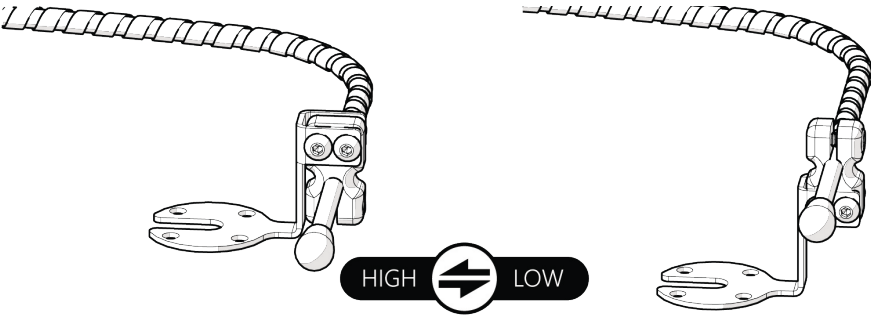
5.2



- Step 1.** Remove (A) safety cap and loosen mount clamp (B2) screw (1). Slide mount (B) to desired vertical position.
- Step 2.** Tighten screw (1) and replace safety cap (A).

Mounting Height Adjustment

5.3



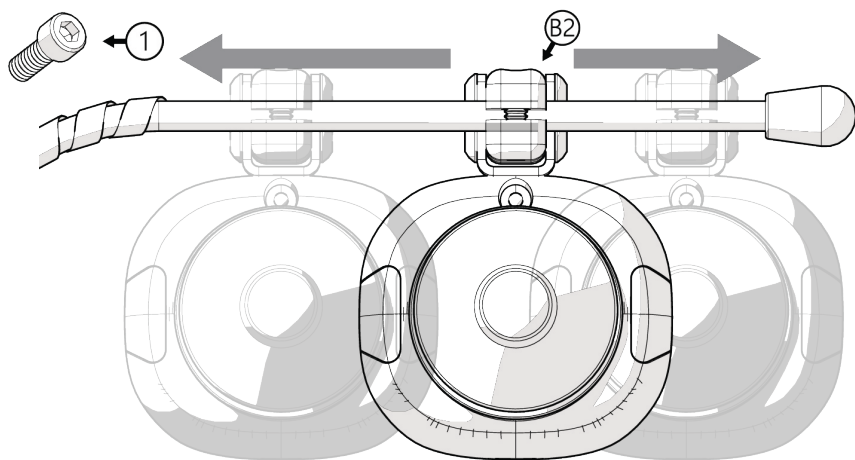
- Step 1:
- Remove safety cap (A), loosen mount clamp (B1) on its side. Ensure screw is always facing away from client. Slide off mount clamp from rod (D). Disassemble joystick bracket (B1) and loosen four attachment screws (2).
- Step 2.
- Rotate mount clamp (B1) on its side. Ensure screw is always facing away from client.
- Step 3.
- Assemble joystick bracket (B1) to clamp, slide clamp into rod (D) to desired vertical position, and tighten clamp screw (1). Replace safety cap (A).

NOTICE

Mount clamp (B1) screw (1) should **always** face away from client.

Vertical Alignment

5.5



STEP

1

Loosen clamp mount (B2) screw (1), slide on rod (D) to desired vertical position.

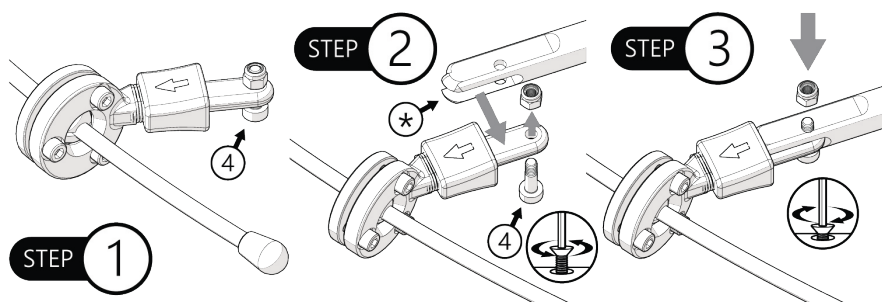
STEP

2

Tighten screw (1).

Installing to Swing Away System or ARMS260 Rod

5.5



Step 1:

Locate swing away earscrew (4).

Step 2:

Loosen ear screw (4) and install swing away receiver or ARMS260 rod (*). Swing away slot should be facing away from joystick.

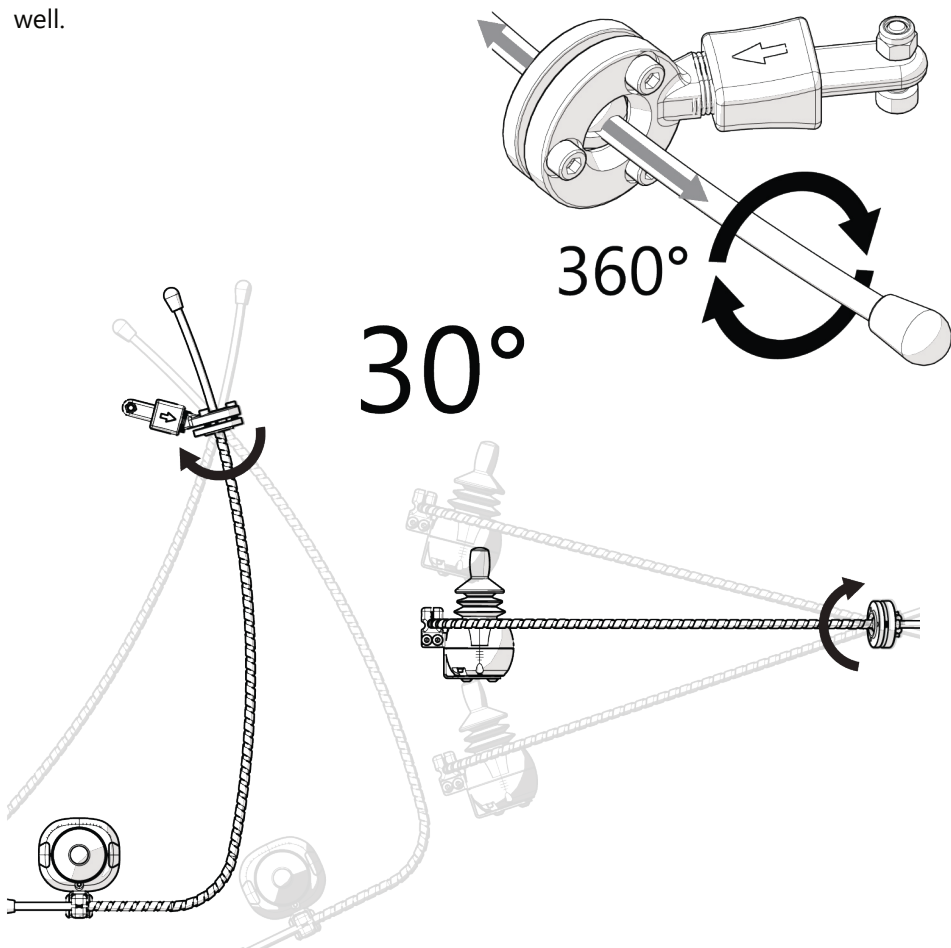
Step 3:

Tighten swing away earscrew (4).

Basic Function

6.1

The SM660-M/ARMS260 Swing Away system allows versatile and on demand adjustment. Rod can be bent and cut to accommodate specifications. It rests within the swing away ball which allows for a 30° adjustment in any direction, and rotates 360° on its own axis as well.



⚠ CAUTION

DO NOT bend or cut rod with client on chair. Repeated rod bending will result in breakage with a possible whiplash effect.

When bending, **ALWAYS** bend rod with the bending force away from you.

SAFETY

For joystick maintenance guidelines refer to the device's user manual.

Maintenance**7.1**

- Check every 6 months that screws are tight. Gently tighten any screws that may have become loose.
- Maintain that the hardware is clean and free of dust.

Cleaning**7.2**

- Wash away surface dirt and grime with a mild dish detergent and rinse away.
- Moisten a soft cloth with water to rub away any remaining dirt.
- Rinse thoroughly with clean water.

Disinfecting**7.1**

- Use a damp cloth with any disinfectant detergent and lightly rub hardware surface.
- Rinse thoroughly with clean water.

Our products are designed, manufactured, and produced to the highest of standards. If any defect in material or workmanship is found, Stealth Products will repair or replace the product at our discretion. Any implied warranty, including the implied warranties of merchantability and fitness for a particular purpose, shall not extend beyond the duration of this warranty. Stealth Products, LLC does not warrant damage due to, but not limited to:

- Misuse, abuse, or misapplication of products.
- Modification of product without written approval from Stealth Products, LLC.
- Any alteration or lack of serial number, where applicable, will automatically void this warranty.
- Stealth Products, LLC is liable for replacement parts only.
- Stealth Products, LLC is not liable for any incurred labor costs.

No person is authorized to alter, extend, or waive the warranties of Stealth Products, LLC.

Stealth Products warrants against failure due to defective materials or workmanship:

Covers: 2 years

Hardware: 5 years

Electronics: 3 years

In Case of Product Failure

8.1

In the event of product failure covered by our warranty, please follow the procedures outlined below:

1. Call Stealth at +1 (512) 715-9995 or toll free +1-800-965-9229.
2. Request the Returns Department or obtain an RA from the Returns Department and follow department or documentation instructions.



Stealth Products, LLC. • info@stealthproducts.com • www.stealthproducts.com
+1(800) 965-9229 | +1(512) 715-9995 | 104 John Kelly Drive, Burnet TX 78611