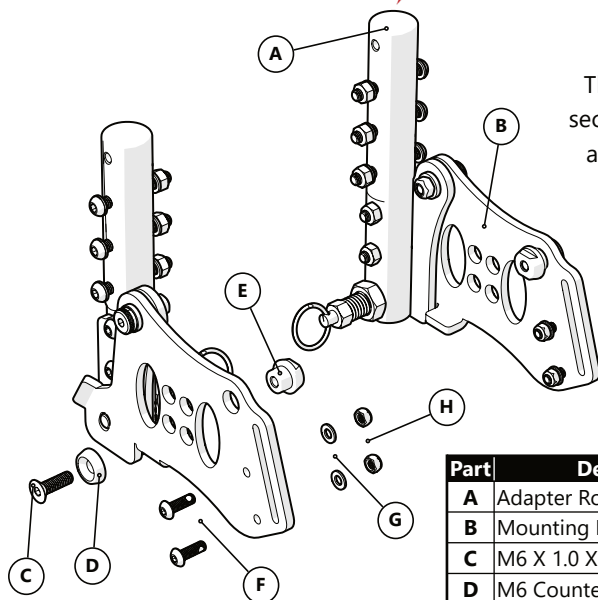




This adapter tube kit is intended to securely fit the Epic Seating System to an Invacare Rea Azalea wheelchair.



Part	Description	Qty	Torque
A	Adapter Rod	2	N/A
B	Mounting Plate	2	N/A
C	M6 X 1.0 X 20MM FHS	2	11 N·m
D	M6 Countersink Bushing	2	N/A
E	M6 X 1.0 Threaded Bushing	2	11 N·m
F	M5 X 0.8 X 16MM BHSN	4	6.8 N·m
G	M5 Washer	4	N/A
H	M5 X 0.8 Nylon Locknut	4	6.8 N·m

EPiC Seating System Adapter Set

Installation Guide

EPiC Seating System Adapter Tube Set
for the **Invacare Rea Azalea** Wheelchair

Customer Satisfaction

Stealth Products is committed to 100% customer satisfaction. Your complete satisfaction is important to us. Please contact us with feedback or suggestions to help us improve the quality and usability of our products.

You may reach us at:

Stealth Products, LLC

104 John Kelly Drive, Burnet, TX 78611



Phone: (512) 715-9995

Fax: (512) 715-9954

Toll Free: (800) 965-9229

Toll Free: (800) 806-1225

info@stealthproducts.com

www.stealthproducts.com

<div><div>EU</div><div>REP</div></div> <div></div> <div>PRIDE MOBILITY PRODUCTS EUROPE BV De Zwaan 3 1601 MS Enkhuizen The Netherlands</div>	<div><div>CH</div><div>REP</div></div> <div>SODIMED SA Chemin Praz Devant 12 1032 Romanel sur-Lausanne Switzerland</div>	<div>UK Authorized Representative</div> <div>PRIDE MOBILITY PRODUCTS LTD. 32 Wedgwood Road, Bicester, Oxfordshire OX26 4UL United Kingdom</div> <div></div>
--	---	---

General

Read and understand all instructions prior to the use of the product. Failure to adhere to instructions and warnings in this document may result in property damage, injury, or death. Product misuse or failure to follow instructions will void the warranty.

Immediately discontinue use if any function is compromised, if parts are missing or loose, or if any component shows signs of excessive wear. Consult with your supplier for repair, adjustment, or replacement.

All persons responsible for fitting, adjustment, and daily use of the devices discussed in these instructions must be familiar with and understand all safety aspects of the devices mentioned. In order for our products to be used successfully, you must read and understand all instructions and warnings, and maintain our products according to our instructions on care and maintenance.

The installation instructions will guide you through this product's options and possibilities.

Instructions are written with the expressed intent of use with standard configurations. They also contain important safety and maintenance information, as well as describe possible problems that can arise during use. For further assistance, or more advanced applications, please contact your supplier or **Stealth Products** at (512) 715-9995 or toll free at (800) 965-9229.

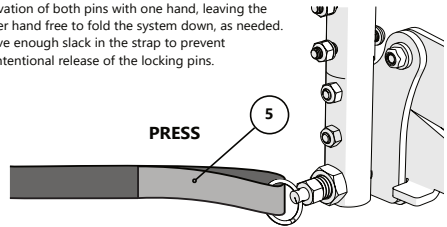
Always keep the operating instructions in a safe place so they may be referenced as necessary.

All information, pictures, illustrations, and specifications are based on the product information that was available at the time of printing. Pictures and illustrations shown in these instructions are representative examples and are not intended to be exact depictions of the various parts of the product.

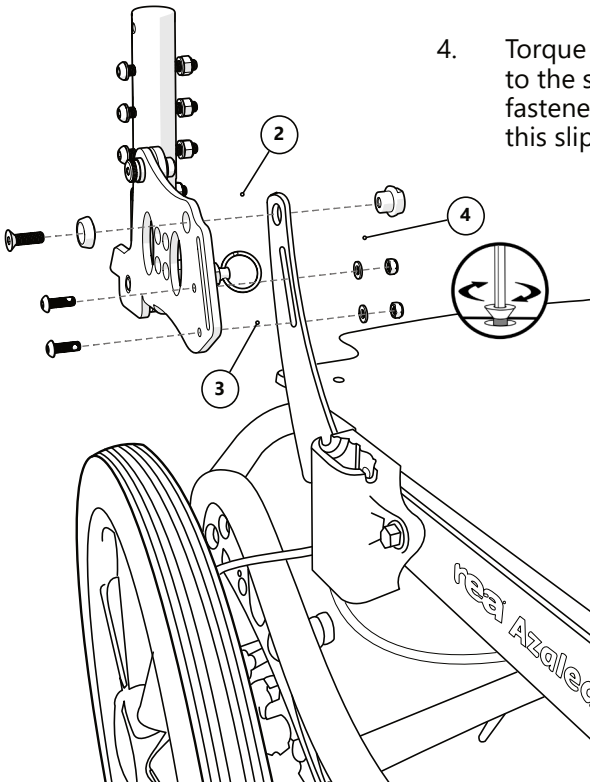
Installation Instructions

1. The Epic Seating attachment set attaches to the same support structure as the OEM back support canes. Locate the fasteners securing the canes to the seat tube brackets and remove them.

The hook and loop strap is intended to assist in the activation of both pins with one hand, leaving the other hand free to fold the system down, as needed. Leave enough slack in the strap to prevent unintentional release of the locking pins.



2. Align the top hole of the Mounting Plate with the top hole in the mounting bracket on the wheelchair frame. Insert the M6 X 1.0 X 20MM FHS (C) through the M6 Countersink Bushing (D) and then through the Mounting Plate (B) and mounting bracket as shown in the illustration to the right. Thread the M6 X 1.0 Threaded Bushing (E) on the M6 X 1.0 X 20MM FHS (C) to secure the attachment to the mounting bracket.
3. Insert the two M5 X 0.8 X 16MM BHSN (F) through the Mounting Plate (B) and mounting bracket. Secure each with an M5 Washer (G) and M5 X 0.8 Nylon Locknut (H).



4. Torque fasteners from Steps 2 and 3 to the specifications shown for each fastener in the table on the front of this slipsheet.

5. Place the hook and loop strip in between the locking pin rings as shown on the upper right of this page.
6. Continue with the installation instructions in the Epic Seating Owner's Manual.



© 2025, Stealth Products, LLC

Warranty Information



Home Page



Online User Manual



Stealth Products, LLC · info@stealthproducts.com · www.stealthproducts.com
(800) 965-9229 | (512) 715-9995 | 104 John Kelly Drive, Burnet, TX 78611