

This adapter tube kit is intended to securely fit the Epic Seating System to an Invacare Rea Dahlia wheelchair.

Part	Description	Qty	Torque
A	Mounting Bracket	2	N/A
B	Adapter Rod	2	N/A
C	Locking Pin	2	N/A

EpiC Seating System Adapter Set

Installation Guide

EpiC Seating System Adapter Tube Set
for the **Invacare Rea Dahlia** Wheelchair

Customer Satisfaction

Stealth Products is committed to 100% customer satisfaction. Your complete satisfaction is important to us. Please contact us with feedback or suggestions to help us improve the quality and usability of our products.

You may reach us at:

Stealth Products, LLC

104 John Kelly Drive, Burnet, TX 78611



Phone: (512) 715-9995

Fax: (512) 715-9954

Toll Free: (800) 965-9229

Toll Free: (800) 806-1225

info@stealthproducts.com

www.stealthproducts.com

<div><div>EU</div><div>REP</div></div> <div></div> <div>PRIDE MOBILITY PRODUCTS EUROPE BV De Zwaan 3 1601 MS Enkhuizen The Netherlands</div>	<div><div>CH</div><div>REP</div></div> <div>SODIMED SA Chemin Praz Devant 12 1032 Romanel sur-Lausanne Switzerland</div>	<div>UK Authorized Representative</div> <div>PRIDE MOBILITY PRODUCTS LTD. 32 Wedgwood Road, Bicester, Oxfordshire OX26 4UL United Kingdom</div> <div></div>
--	---	---

General

Read and understand all instructions prior to the use of the product. Failure to adhere to instructions and warnings in this document may result in property damage, injury, or death. Product misuse or failure to follow instructions will void the warranty.

Immediately discontinue use if any function is compromised, if parts are missing or loose, or if any component shows signs of excessive wear. Consult with your supplier for repair, adjustment, or replacement.

All persons responsible for fitting, adjustment, and daily use of the devices discussed in these instructions must be familiar with and understand all safety aspects of the devices mentioned. In order for our products to be used successfully, you must read and understand all instructions and warnings, and maintain our products according to our instructions on care and maintenance.

The installation instructions will guide you through this product's options and possibilities. Instructions are written with the expressed intent of use with standard configurations. They also contain important safety and maintenance information, as well as describe possible problems that can arise during use. For further assistance, or more advanced applications, please contact your supplier or **Stealth Products** at (512) 715-9995 or toll free at (800) 965-9229.

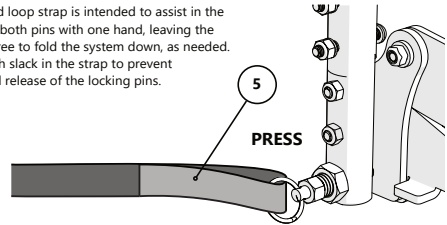
Always keep the operating instructions in a safe place so they may be referenced as necessary.

All information, pictures, illustrations, and specifications are based on the product information that was available at the time of printing. Pictures and illustrations shown in these instructions are representative examples and are not intended to be exact depictions of the various parts of the product.

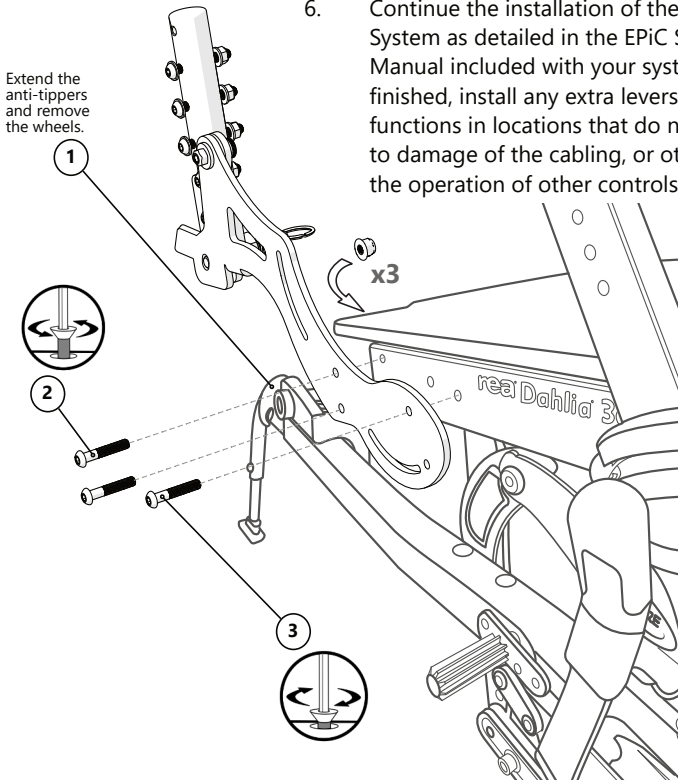
Installation Instructions

1. Extend the anti-tippers as low as they will go and remove the wheels from the wheelchair. The frame should sit on the anti-tippers and provide a more stable installation procedure.
2. Remove the six bolts and flange nuts securing the back support canes to the seat frame. Save these bolts for installation of the EPiC System, and set the back support canes aside for later storage.
3. Align the holes in the mounting bracket (A) with the corresponding holes in the seat frame and, using the fasteners removed in step 2, secure the brackets to the seat frame. The locking pin for this side should face away from the wheel and towards the centerline of the wheelchair. Tighten the fasteners to 11 N·m of torque.
4. Repeat step 3 for the mounting bracket on the opposite side of the seat frame. When installation of the brackets is complete, replace the wheels and retract the anti-tippers.

The hook and loop strap is intended to assist in the activation of both pins with one hand, leaving the other hand free to fold the system down, as needed. Leave enough slack in the strap to prevent unintentional release of the locking pins.



5. Install the hook and loop strap as shown in the illustration on the upper right of this page.
6. Continue the installation of the EPiC Seating System as detailed in the EPiC Seating Owner's Manual included with your system. When finished, install any extra levers for tilt or brake functions in locations that do not pinch or lead to damage of the cabling, or otherwise hinder the operation of other controls.





© 2025, Stealth Products, LLC

Warranty Information



Home Page



Online User Manual



Stealth Products, LLC · info@stealthproducts.com · www.stealthproducts.com
(800) 965-9229 | (512) 715-9995 | 104 John Kelly Drive, Burnet, TX 78611