

This adapter tube kit is intended to securely fit the Epic Seating System to an Invacare Rea Clematis wheelchair.

Part	Description	Qty	Torque
A	Adapter Tube	2	N/A
B	Mounting Bracket	2	N/A
C	Locking Pin	2	N/A
D	M6 X 1 X 20MM FHS	2	11 N-m
E	M6 Countersink Bushing	2	N/A
F	M6 X 1 Nut	2	11 N-m
G	M5 X 0.8 X 16MM BHSN	2	6.8 N-m
H	M5 Stainless Steel Washer	2	N/A
J	M5 X 0.8 Nylon Lock Nut	2	6.8 N-m

EPiC Seating System Adapter Set

Installation Guide

EPiC Seating System Adapter Tube Set
for the **Invacare Rea Clematis** Wheelchair

Customer Satisfaction

Stealth Products is committed to 100% customer satisfaction. Your complete satisfaction is important to us. Please contact us with feedback or suggestions to help us improve the quality and usability of our products.

You may reach us at:

Stealth Products, LLC

104 John Kelly Drive, Burnet, TX 78611



Phone: (512) 715-9995

Fax: (512) 715-9954

Toll Free: (800) 965-9229

Toll Free: (800) 806-1225

info@stealthproducts.com

www.stealthproducts.com

<div><div>EU</div><div>REP</div></div> <div></div> <div>PRIDE MOBILITY PRODUCTS EUROPE BV De Zwaan 3 1601 MS Enkhuizen The Netherlands</div>	<div><div>CH</div><div>REP</div></div> <div>SODIMED SA Chemin Praz Devant 12 1032 Romanel sur-Lausanne Switzerland</div>	<div>UK Authorized Representative</div> <div>PRIDE MOBILITY PRODUCTS LTD. 32 Wedgwood Road, Bicester, Oxfordshire OX26 4UL United Kingdom</div> <div></div>
--	---	---

General

Read and understand all instructions prior to the use of the product. Failure to adhere to instructions and warnings in this document may result in property damage, injury, or death. Product misuse or failure to follow instructions will void the warranty.

Immediately discontinue use if any function is compromised, if parts are missing or loose, or if any component shows signs of excessive wear. Consult with your supplier for repair, adjustment, or replacement.

All persons responsible for fitting, adjustment, and daily use of the devices discussed in these instructions must be familiar with and understand all safety aspects of the devices mentioned. In order for our products to be used successfully, you must read and understand all instructions and warnings, and maintain our products according to our instructions on care and maintenance.

The installation instructions will guide you through this product's options and possibilities. Instructions are written with the expressed intent of use with standard configurations. They also contain important safety and maintenance information, as well as describe possible problems that can arise during use. For further assistance, or more advanced applications, please contact your supplier or **Stealth Products** at (512) 715-9995 or toll free at (800) 965-9229.

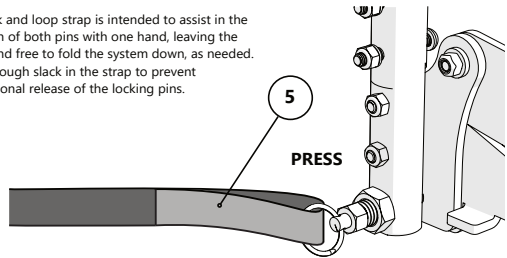
Always keep the operating instructions in a safe place so they may be referenced as necessary.

All information, pictures, illustrations, and specifications are based on the product information that was available at the time of printing. Pictures and illustrations shown in these instructions are representative examples and are not intended to be exact depictions of the various parts of the product.

Installation Instructions

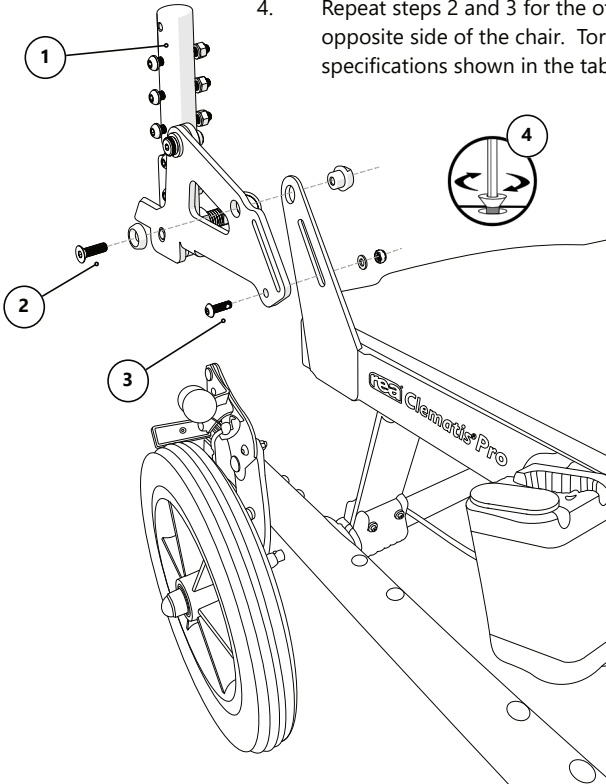
1. Remove the lever for tilt control from the handle of the wheelchair and secure the screws to the lever for later installation. Uninstall the cane assembly by removing the screws securing it to the brackets on the seat tubes.

The hook and loop strap is intended to assist in the activation of both pins with one hand, leaving the other hand free to fold the system down, as needed. Leave enough slack in the strap to prevent unintentional release of the locking pins.



2. Install the M6 X 1 Nut (F) into the upper hole of the Mounting Bracket (B) and the upper hole of the bracket on the frame of the chair. Insert the M6 X 1 X 20MM FHS (D) through the M6 Countersink Bushing (E), through the upper hole in the Mounting Bracket (B), and thread into the M6 X 1 Nut (F). Loosely tighten the screw to secure the plate.
3. Rotate the Mounting Bracket (B) to align the lower hole with the slot in the chair bracket and insert the M5 X 0.8 X 16MM Button Head Screw with Nylon Patch (G). Place the M5 Stainless Steel Washer (H) and M5 X 0.8 Nylon Lock Nut (J) on the screw and finger-tighten it.

4. Repeat steps 2 and 3 for the other Mounting Bracket (B) on the opposite side of the chair. Torque the fasteners to the specifications shown in the table on the cover of this manual.



5. Install the hook and loop strap as shown in the illustration on the upper right of this page. Ensure that enough slack is left in the strap to prevent the unintentional release of the locking pins.
6. Continue the installation according to the instructions in the EPiC Seating Owner's Manual. When complete, reinstall the tilt control lever to the handles, ensuring that it operates and does not interfere with any other function of the system.



© 2025, Stealth Products, LLC

Warranty Information



Home Page



Online User Manual



Stealth Products, LLC · info@stealthproducts.com · www.stealthproducts.com
(800) 965-9229 | (512) 715-9995 | 104 John Kelly Drive, Burnet, TX 78611