

This adapter tube kit is intended to securely fit the Epic Seating System to a Netti 4U wheelchair.

Part	Description	Qty	Torque
<b>A</b>	Adapter Tube	2	N/A
<b>B</b>	Mounting Plate	2	N/A
<b>C</b>	M10 x 1.25 x 25MM BHS	2	55 N·m
<b>D</b>	M6 x 1 x 22MM BHS	2	11 N·m
<b>E</b>	M10 x 1.25 NLCN	2	55 N·m
<b>F</b>	M6 x 1 NLN	2	11 N·m

## EPiC Seating System Adapter Set

### Installation Guide

EPiC Seating System Adapter Tube Set  
for the **Netti 4U** Wheelchair

## Customer Satisfaction

**Stealth Products** is committed to 100% customer satisfaction. Your complete satisfaction is important to us. Please contact us with feedback or suggestions to help us improve the quality and usability of our products.

You may reach us at:

## Stealth Products, LLC

104 John Kelly Drive, Burnet, TX 78611



Phone: (512) 715-9995

Fax: (512) 715-9954

Toll Free: (800) 965-9229

Toll Free: (800) 806-1225

[info@stealthproducts.com](mailto:info@stealthproducts.com)

[www.stealthproducts.com](http://www.stealthproducts.com)

<div><div>EU</div><div>REP</div></div> <div></div> <div><b>PRIDE MOBILITY PRODUCTS EUROPE BV</b> De Zwaan 3 1601 MS Enkhuizen The Netherlands</div>	<div><div>CH</div><div>REP</div></div> <div><b>SODIMED SA</b> Chemin Praz Devant 12 1032 Romanel sur-Lausanne Switzerland</div>	<div><b>UK</b> Authorized Representative</div> <div><b>PRIDE MOBILITY PRODUCTS LTD.</b> 32 Wedgwood Road, Bicester, Oxfordshire OX26 4UL United Kingdom</div> <div></div>
--	---	---

## General

Read and understand all instructions prior to the use of the product. Failure to adhere to instructions and warnings in this document may result in property damage, injury, or death. Product misuse or failure to follow instructions will void the warranty.

Immediately discontinue use if any function is compromised, if parts are missing or loose, or if any component shows signs of excessive wear. Consult with your supplier for repair, adjustment, or replacement.

All persons responsible for fitting, adjustment, and daily use of the devices discussed in these instructions must be familiar with and understand all safety aspects of the devices mentioned. In order for our products to be used successfully, you must read and understand all instructions and warnings, and maintain our products according to our instructions on care and maintenance.

The installation instructions will guide you through this product's options and possibilities. Instructions are written with the expressed intent of use with standard configurations. They also contain important safety and maintenance information, as well as describe possible problems that can arise during use. For further assistance, or more advanced applications, please contact your supplier or **Stealth Products** at (512) 715-9995 or toll free at (800) 965-9229.

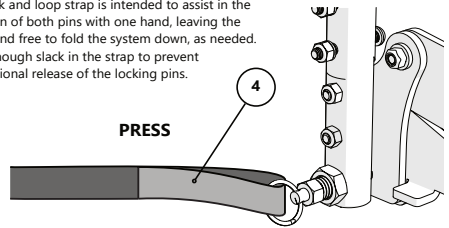
Always keep the operating instructions in a safe place so they may be referenced as necessary.

All information, pictures, illustrations, and specifications are based on the product information that was available at the time of printing. Pictures and illustrations shown in these instructions are representative examples and are not intended to be exact depictions of the various parts of the product.

# Installation Instructions

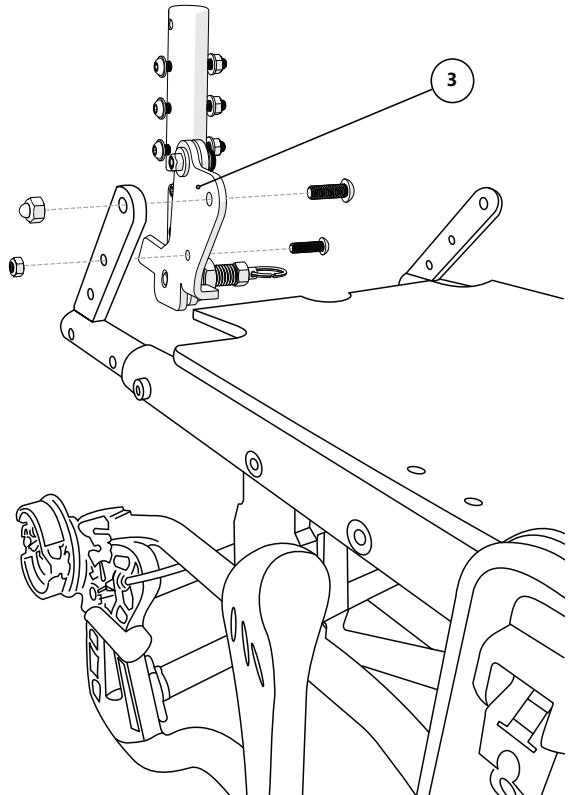
1. Remove the wheels from the frame and set them aside. Uninstall the tilt control lever from the cane. Reinstall the screws to the lever housing to prevent loss and leave the lever with the chair.

The hook and loop strap is intended to assist in the activation of both pins with one hand, leaving the other hand free to fold the system down, as needed. Leave enough slack in the strap to prevent unintentional release of the locking pins.



2. Remove the screws securing the back support brackets to the seat rail brackets by removing two screws from each bracket. Remove the back support cane assembly and set it aside.
3. Select the proper attachment rod for the side of the chair you are working on. The attachment rod will install on the inside face of the bracket. Align the holes in the attachment rod with the threaded holes in the bracket. Install the M10 x 1.25 x 25MM BHS (C) and the M6 x 1 x 22MM BHS as shown in the image to the right. Install the M10 x 1.25 NLCN (E) and M6 x 1 NLN (F) on the respective screws and torque to the specification shown in the table on the cover of this guide.

4. Repeat this step for the other side of the chair. Using the strip of hook and loop fabric in the kit, connect the rings of the locking pins as shown in the upper diagram to right. Ensure that there is enough slack in the strip to prevent accidental unlocking of the pins.



5. Continue with the installation of your EPiC Seating System as shown in the EPiC Seating System manual included with the system. When complete, install the lever for tilt control in a position that is functional and does not hinder the function of other levers or controls and reinstall the wheels.



© 2025, Stealth Products, LLC

**Warranty Information**



**Home Page**



**Online User Manual**



Stealth Products, LLC · info@stealthproducts.com · www.stealthproducts.com  
(800) 965-9229 | (512) 715-9995 | 104 John Kelly Drive, Burnet, TX 78611