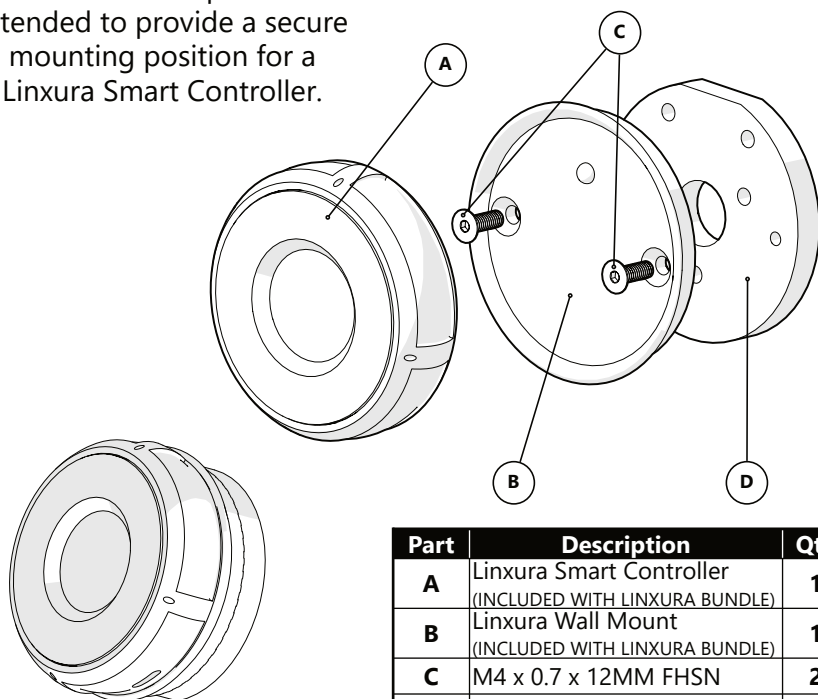




This interface plate is intended to provide a secure mounting position for a Linxura Smart Controller.



Part	Description	Qty
A	Linxura Smart Controller (INCLUDED WITH LINXURA BUNDLE)	1
B	Linxura Wall Mount (INCLUDED WITH LINXURA BUNDLE)	1
C	M4 x 0.7 x 12MM FHSN	2
D	Interface Plate	1

Linxura Interface Plate

Installation Guide

Interface Plate for the Linxura Smart Controller

Customer Satisfaction

Stealth Products is committed to 100% customer satisfaction. Your complete satisfaction is important to us. Please contact us with feedback or suggestions to help us improve the quality and usability of our products.

You may reach us at:

Stealth Products, LLC
104 John Kelly Drive, Burnet, TX 78611



Phone: (512) 715-9995
Fax: (512) 715-9954

Toll Free: (800) 965-9229
Toll Free: (800) 806-1225

info@stealthproducts.com
www.stealthproducts.com

<div><div>EU</div><div>REP</div></div> <div></div> <div>PRIDE MOBILITY PRODUCTS EUROPE BV De Zwaan 3 1601 MS Enkhuizen The Netherlands</div>	<div><div>CH</div><div>REP</div></div> <div>SODIMED SA Chemin Praz Devant 12 1032 Romanel sur-Lausanne Switzerland</div>	<div>UK Authorized Representative</div> <div>PRIDE MOBILITY PRODUCTS LTD. 32 Wedgwood Road, Bicester, Oxfordshire OX26 4UL United Kingdom</div> <div></div>
--	---	---

General

Read and understand all instructions prior to the use of the product. Failure to adhere to instructions and warnings in this document may result in property damage, injury, or death. Product misuse or failure to follow instructions will void the warranty.

Immediately discontinue use if any function is compromised, if parts are missing or loose, or if any component shows signs of excessive wear. Consult with your supplier for repair, adjustment, or replacement.

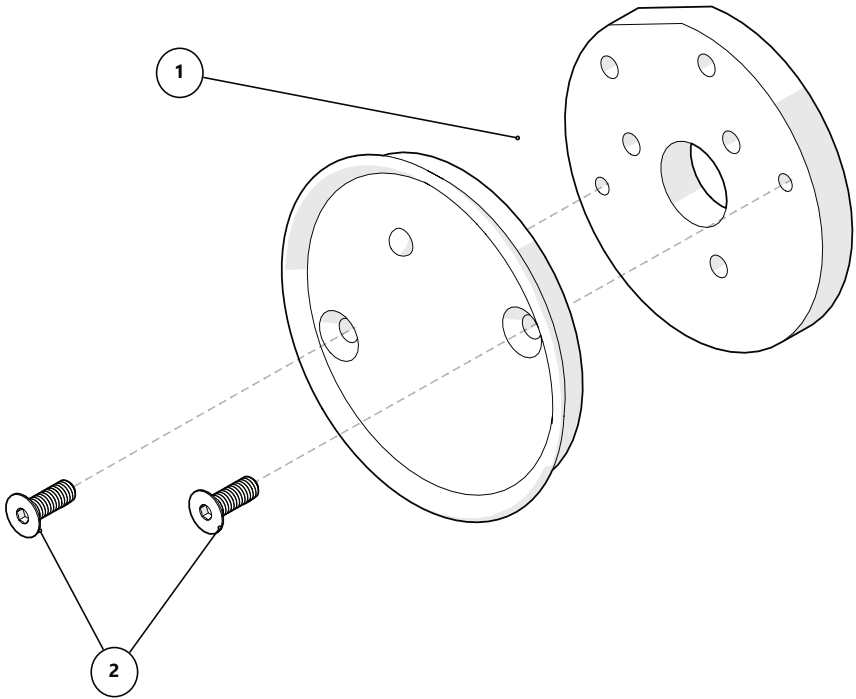
All persons responsible for fitting, adjustment, and daily use of the devices discussed in these instructions must be familiar with and understand all safety aspects of the devices mentioned. In order for our products to be used successfully, you must read and understand all instructions and warnings, and maintain our products according to our instructions on care and maintenance.

The installation instructions will guide you through this product’s options and possibilities. Instructions are written with the expressed intent of use with standard configurations. They also contain important safety and maintenance information, as well as describe possible problems that can arise during use. For further assistance, or more advanced applications, please contact your supplier or **Stealth Products** at (512) 715-9995 or toll free at (800) 965-9229.

Always keep the operating instructions in a safe place so they may be referenced as necessary.

All information, pictures, illustrations, and specifications are based on the product information that was available at the time of printing. Pictures and illustrations shown in these instructions are representative examples and are not intended to be exact depictions of the various parts of the product.

Installation Instructions



1. Align the Interface Plate (D) with the holes in the Wall Plate (B) as shown in the image above.
2. Use the two included M4 x 0.7 x 12MM FHSN (C) to fasten the Wall Plate to the Interface Plate.



© 2025, Stealth Products, LLC

Warranty Information



Home Page



Online User Manual



Stealth Products, LLC · info@stealthproducts.com · www.stealthproducts.com
(800) 965-9229 | (512) 715-9995 | 104 John Kelly Drive, Burnet, TX 78611