

## **HMO500**

---

Owner's Manual - Maintenance Guide

HMO500 Headrest Hardware

# Table of Contents

<b>Customer Satisfaction .....</b>	<b>i</b>
General .....	i
<b>Important Information .....</b>	<b>ii-iii</b>
Warranty .....	ii
Supplier Reference.....	ii
Warning Labels.....	iii
Limited Liability .....	iii
Testing .....	iii
<b>Design and Function .....</b>	<b>1-4</b>
Intended Use.....	1
Features.....	1
Installation Plan .....	1
Installation Overview .....	2
Mounting Hardware Parts.....	3
Mounting Hardware Packages and Tools .....	4
<b>Installation Instructions .....</b>	<b>5-12</b>
Seat Back Mount Installation.....	5-6
Depth Adjustment .....	7
Angle Adjustment .....	8-10
Adapter Plate Adjustment .....	11
Headrest Installation, Option 1.....	12
Headrest Installation, Option 2.....	12
<b>First-Time Use .....</b>	<b>13</b>
Dealer Assistance .....	13
User Testing .....	13
Conditions of Use .....	13
<b>Care and Maintenance .....</b>	<b>14</b>
Cleaning .....	14

Customer Satisfaction

Stealth Products is committed to 100% customer satisfaction. Your complete satisfaction is important to us. Please contact us with feedback or suggestions to help us improve the quality and usability of our products.

You may reach us at:

Stealth Products, LLC  
104 John Kelly Drive, Burnet, TX 78611



Phone: (512) 715-9995  
Fax: (512) 715-9954

Toll Free: (800) 965-9229  
Toll Free: (800) 806-1225

info@stealthproducts.com  
www.stealthproducts.com

<div>EU REP</div> <div>PRIDE MOBILITY PRODUCTS EUROPE BV</div> <div>De Zwaan 3 1601 MS Enkhuizen The Netherlands</div>	<div>CE</div> <div>SODIMED SA</div> <div>Chemin Praz Devant 12 1032 Romanel sur-Lausanne Switzerland</div>	<div>UK Authorized Representative</div> <div>PRIDE MOBILITY PRODUCTS LTD.</div> <div>32 Wedgwood Road, Bicester, Oxfordshire OX26 4UL United Kingdom</div>	<div>UK CA</div>
--	--	--	----------------------

General

Read and understand all instructions prior to the use of the product. Failure to adhere to instructions and warnings in this document may result in property damage, injury, or death. Product misuse or failure to follow instructions will void the warranty.

Immediately discontinue use if any function is compromised, if parts are missing or loose, or if any component shows signs of excessive wear. Consult with your supplier for repair, adjustment, or replacement.

All persons responsible for fitting, adjustment, and daily use of the devices discussed in these instructions must be familiar with and understand all safety aspects of the devices mentioned. In order for our products to be used successfully, you must read and understand all instructions and warnings, and maintain our products according to our instructions on care and maintenance. The installation instructions will guide you through this product’s options and possibilities.

Instructions are written with the expressed intent of use with standard configurations. They also contain important safety and maintenance information, as well as describe possible problems that can arise during use. For further assistance, or more advanced applications, please contact your supplier or **Stealth Products** at (512) 715-9995 or toll free at (800) 965-9229.

Always keep the operating instructions in a safe place so they may be referenced as necessary.

All information, pictures, illustrations, and specifications are based on the product information that was available at the time of printing. Pictures and illustrations shown in these instructions are representative examples and are not intended to be exact depictions of the various parts of the product.

## Important Information

### **CAUTION**

These products are designed to be fitted, applied, and installed exclusively by a healthcare professional trained for these purposes. The fitting, application, and installation by a non-qualified individual could result in serious injury.

## Warranty

Our products are designed, manufactured, and produced to the highest of standards. If any defect in material or workmanship is found, Stealth Products will repair or replace the product at our discretion. Any implied warranty, including the implied warranties of merchantability and fitness for a particular purpose, shall not extend beyond the duration of this warranty. **Stealth Products** does not warrant damage due to, but not limited to: misuse, abuse, or misapplication of product, and/or modification of product without written approval from **Stealth Products, LLC**. Any alteration or lack of serial number, where applicable, will automatically void all warranty.

**Stealth Products, LLC** is liable for replacement parts only. **Stealth Products, LLC** is not liable for any incurred labor costs. **Stealth Products** warrants against failure due to defective materials or workmanship:

**Covers, Headrest Pads, Cushions: 2 years**

**Hardware: 5 years**

**Electronics: 3 years**

In the event of a product failure covered by our warranty, please follow the procedures outlined below:

Call **Stealth Products** at (512) 715-9995 or toll free at (800) 965-9229.

Request a Return Authorization (RA) form from the Returns Department and follow the documentation instructions. Full warranty information may be found by visiting the website at <https://stlpro.site/returns-n-warranty>, or by scanning the Warranty Information QR code located on the back cover of this manual.

You can download additional copies of this manual by accessing the Stealth website (<https://stlpro.site/stealth-docs>) and searching "P17D428" in the search bar at the top of the page.

## Supplier Reference

<b>Supplier:</b>	
<b>Telephone:</b>	
<b>Address:</b>	
<b>Purchase Date:</b>	
<b>Model:</b>	

## Warning Labels

Warnings are included for the safety of the user, client, operator, and property. Please read and understand what the signal words **DANGER**, **WARNING**, **CAUTION**, **NOTICE**, and **SAFETY** mean, and how they could affect the user, those around the user, and property.



### **DANGER**

Identifies an **imminent** situation which, if not avoided, may result in **severe injury, death, and property damage**.



### **WARNING**

Identifies a **potential** situation which, if not avoided, may result in **severe injury, death, and property damage**.



### **CAUTION**

Identifies a **potential** situation which, if not avoided, may result in **minor to moderate injury and property damage**.

### **NOTICE**

Identifies important information not related to injury, but possible **property damage**.

### **SAFETY**

Indicates steps or instructions for safe practices, reminders of safe procedures, or important safety equipment that may be necessary.

## Limited Liability

**Stealth Products, LLC** accepts no liability for personal injury or damage to property that may arise from the failure of the user or other persons to follow the recommendations, warnings, and instructions in this manual.

**Stealth Products** does not hold responsibility for final integration of final assembly of product to end user. **Stealth Products** is not liable for user death or injury.

## Testing

Initial setup and driving should be done in an open area free of obstacles until the user is fully capable of driving safely.

### Intended Use

The **HMO500** is a lightweight, multi-axis mounting bracket for use with Stealth's headrests. This hardware is designed to provide multi-axis positioning of the head support, increasing the ability to properly accommodate asymmetrical head positioning.

### Features

The **HMO500** hardware:

- is lightweight, multi-axis hardware;
- offers height, depth, and angle adjustments;
- is compatible with all Stealth headrests;
- has a multi-hole pattern to accommodate existing headrests; and,
- is compatible with after-market headrests.



#### WARNING

Stealth does not recommend the **HMO500** for clients with tone.



#### WARNING

Only a qualified service technician may install the **HMO500** hardware.

### Installation Plan

Set up an installation plan before installing or making any adjustments to the hardware. Based on the user's needs, this plan should specify:

- The height required for the headrest.
- The angle the mounting bracket and horizontal bar need to be placed in order to promote the best fit of the headrest to the client.



### CAUTION

Use the proper tools to install and adjust the HMO500 hardware. The use of improper tools may cause damage to the device.

## Installation

- Install the hardware onto the corresponding headrest for the client.
- Determine the correct placement of the hardware on the chair. If the height needs to be changed, follow the instructions in the user manual.
- If the angles of the hardware need to be adjusted, loosen the desired screws and make the adjustments necessary until the headrest is in the correct placement. Secure the screws.
- Make any final adjustments necessary and ensure all screws are secure.



### CAUTION

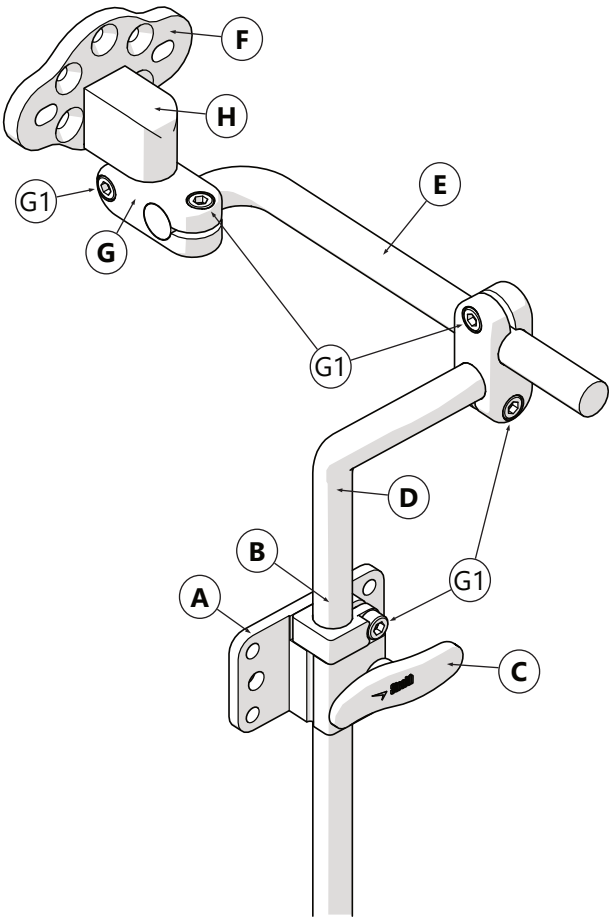
Use only the screws provided in the package with the hardware. Tighten the screws firmly, but not excessively. Excessive force may damage the unit.



### WARNING

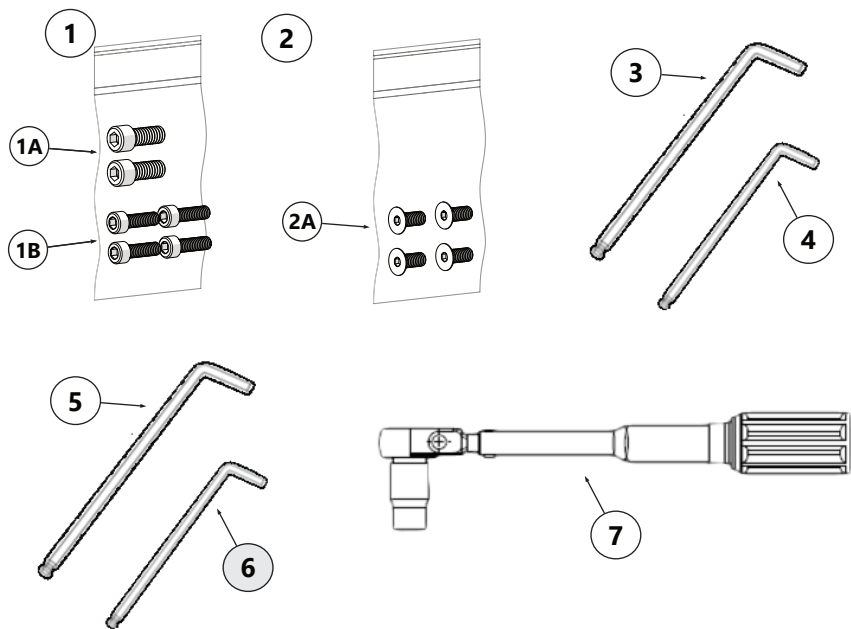
Discontinue use if any product's function becomes compromised or loose, shows signs of excessive wear or missing parts, or ceases to function as originally intended.

Mounting Hardware Parts



	Description		
A	Seat Back Mount		
B	Stop Collar		
C	Handle		
D	Vertical Bar		
E	Horizontal Bar		
F	Headrest Universal Adapter Plate		
G	Bar Clamp	G1	M5 x 0.8 x 12mm SHS (5)
H	Headrest Adapter Mount		

Mounting Hardware Packages and Tools



Description		
1	Hardware Package	1A 1/4-20 x 5/8 SHS (2) 1B 10-32 x 5/8 SHS (4)
	Hardware Package	2A M5 x 0.8 x 12mm FHS (4)

\* Tools not included

Tools	
3	3mm Allen Wrench/T-Handle*
4	4mm Allen Wrench/T-Handle*
5	3/16" Allen Wrench/T-Handle*
6	5/32" Allen Wrench/T-Handle*
7	Torque Wrench*

Torque Specifications

Item	Torque Requirement
1A	45 in/lb
1B	45 in/lb
2A	40 in/lb
G1*	70 in/lb

\* from page 7

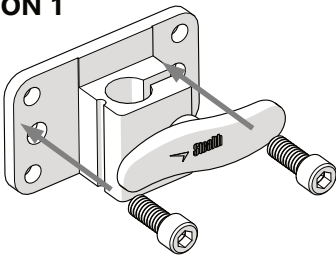
## Installation Instructions

### Seat Back Mount Installation

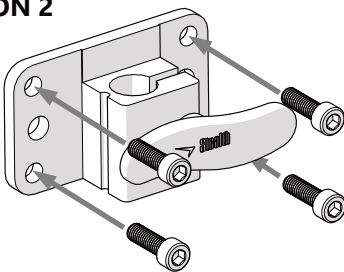
- Step 1:** Determine the necessary screws in order to properly install the Seat Back Mount (A) to the chair. Position the Seat Back Mount (A) on the backrest at the desired height. Secure with corresponding screws provided in the Hardware Pack (1)
- Step 2:** Position the Stop Collar (B) on the vertical bar at the approximate height for installation. Insert and tighten the screw. Refer to the chart on page 4 for torque specifications.

#### STEP 1

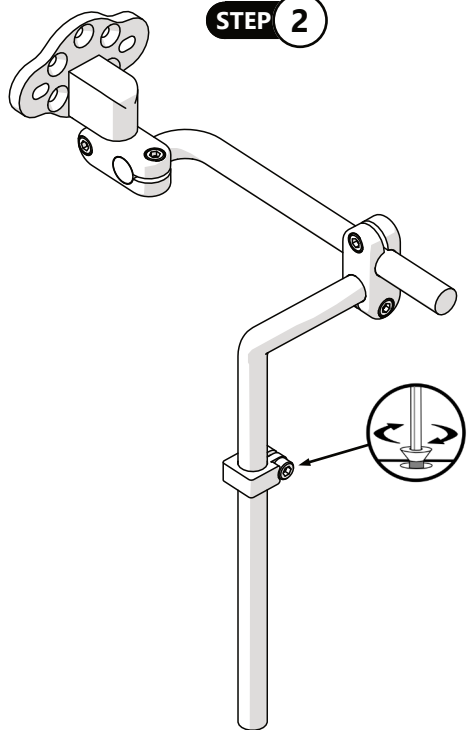
##### OPTION 1



##### OPTION 2



#### STEP 2



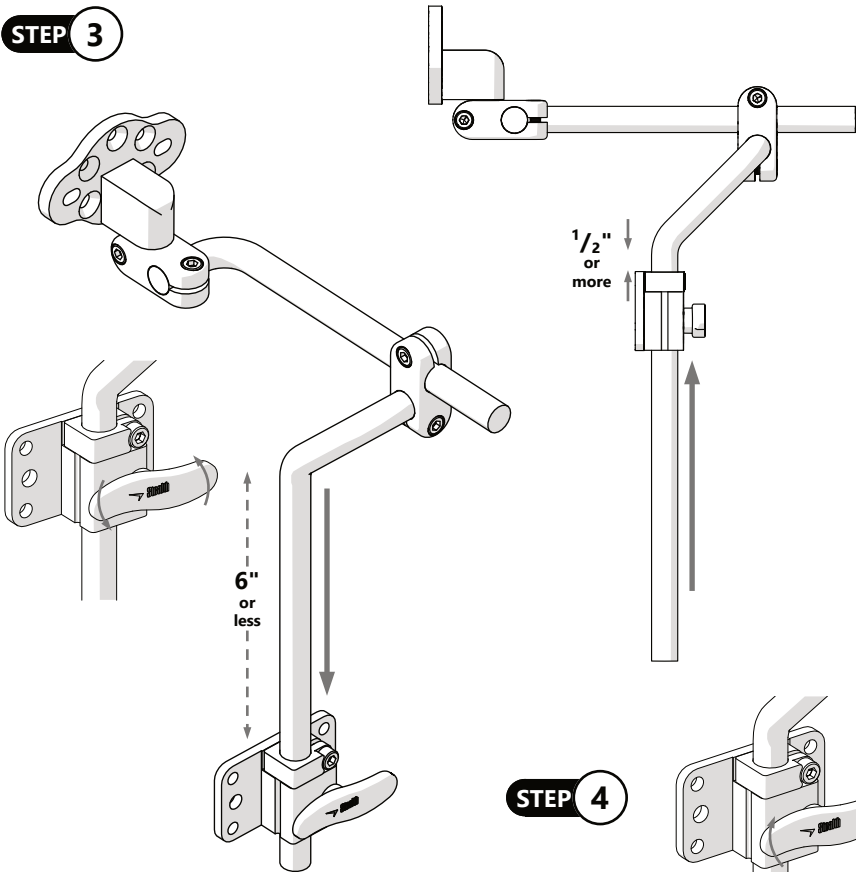
#### NOTICE

#10/32 Socket Head Screws (1B) are provided for Option 1 (4 screws), 1/4-20 Socket Head Screws (1A) are provided for Option 2 (2 screws).

#### NOTICE

Reference minimum and maximum height adjustment recommendations before installation of Option 2.

## STEP 3



## STEP 4

**Step 3:** Ensure handle (C) has been turned counterclockwise before sliding onto the vertical bar. Insert the vertical bar (D) into the seat back mount. Ensure the stop collar is flush with the seat back mount.

**Step 4:** Turn the handle clockwise to tighten the seat back mount and secure the height adjustment of the vertical bar.

### SAFETY

It is recommended that the seat back mount is moved up no less than 1/2 inch and down no more than 6 inches from the top of the vertical bar.

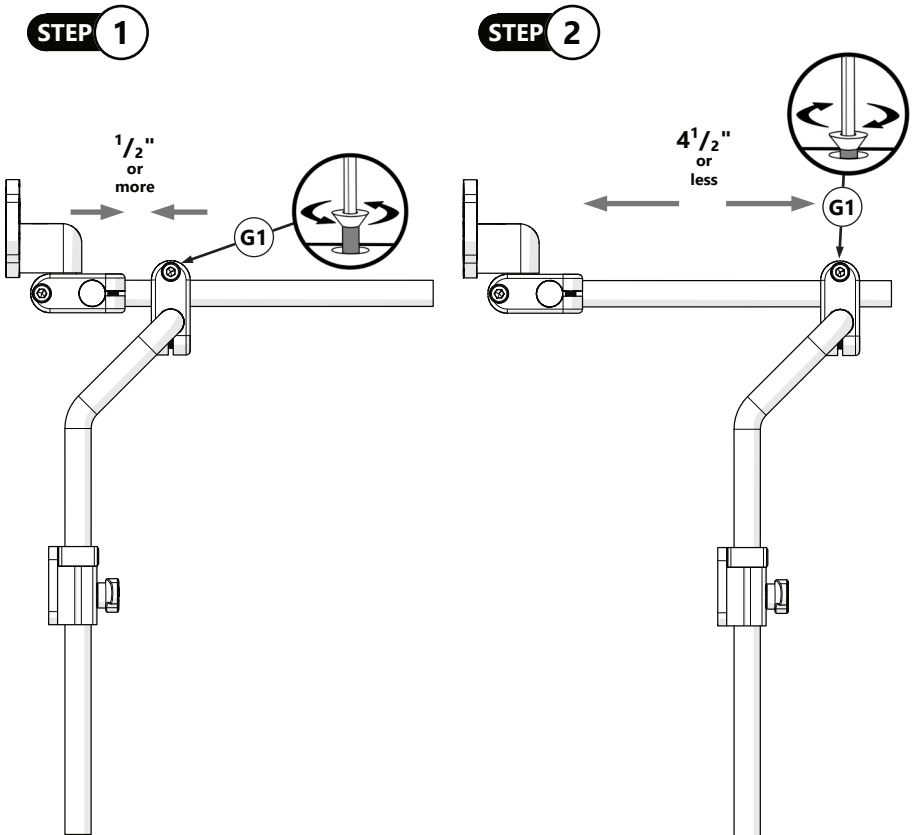
## Installation Instructions

### Depth Adjustment

**Step 1:** Loosen the M5 (G1) screw on the bar clamp with the 4mm T-Handle/Allen Wrench.

**Step 2:** Slide the horizontal bar (E) to the desired depth.

**Step 3:** When the bar has been adjusted to the desired depth, tighten the M5 screw to secure the depth adjustment. Refer to the table on page 4 for proper torque specifications.



#### SAFETY

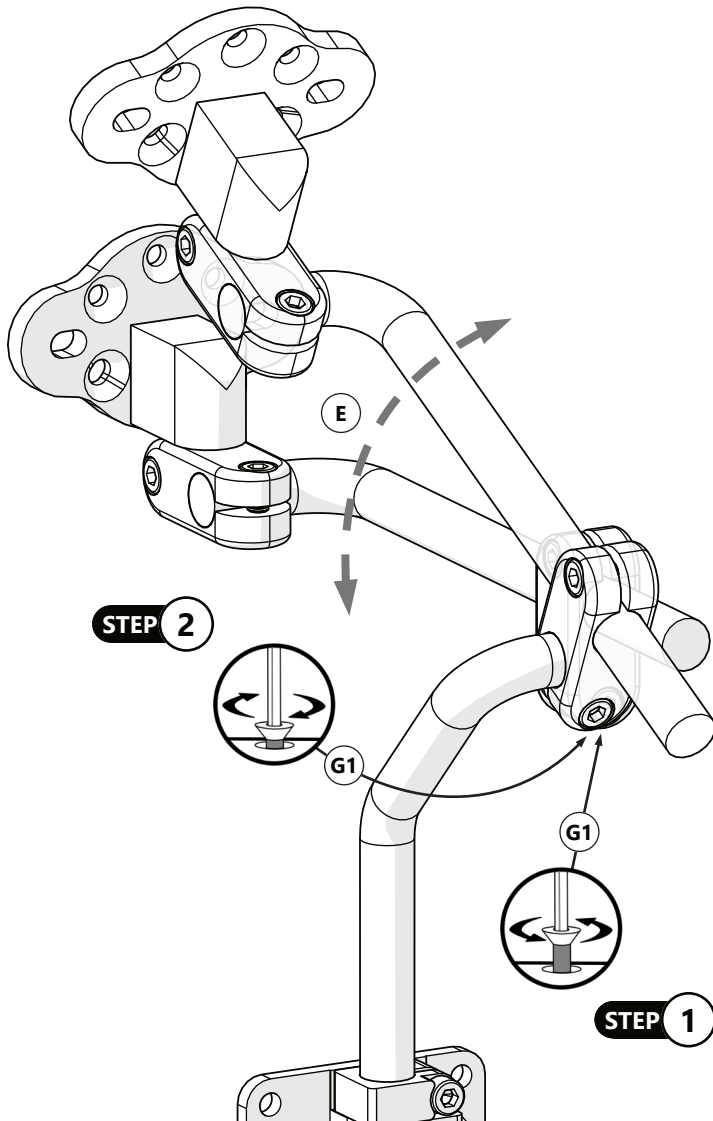
It is recommended that the minimum depth adjustment is  $\frac{1}{2}$  inch within the ends of the bar and a maximum of  $4\frac{1}{2}$  inches between reference points 1 and 2.

## Angle Adjustment

Two points of angle adjustment are available with the HMO500 hardware: the angle of the horizontal bar can be adjusted, as well as the angle of the headrest adapter plate.

**Step 1:** Loosen the M5 (G1) screw from the bar clamp with the 4mm T-Handle/ Allen Wrench.

**Step 2:** Adjust the horizontal bar (E) to the desired angle. When the desired angle is achieved, tighten the M5 screw until secure. Refer to the table on page 4 for proper torque specifications.

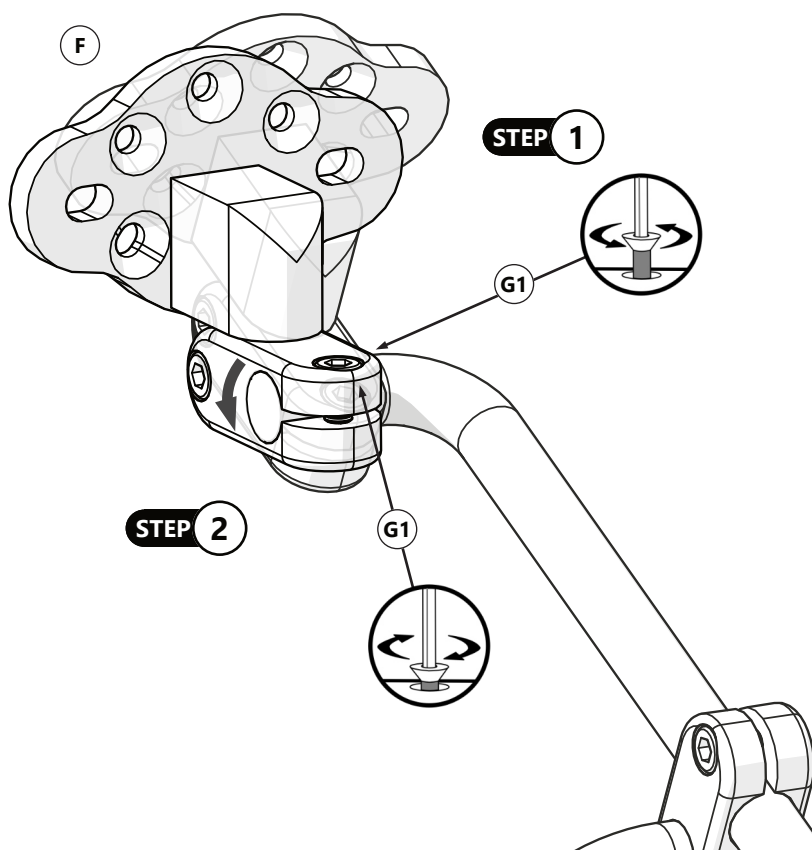


## Installation Instructions

After the horizontal bar has been properly adjusted and is in the desired position, the angle adjustment of the adapter plate must be adjusted in order to mount flush with the headrest. Follow the steps below to adjust the adapter plate in the correct position.

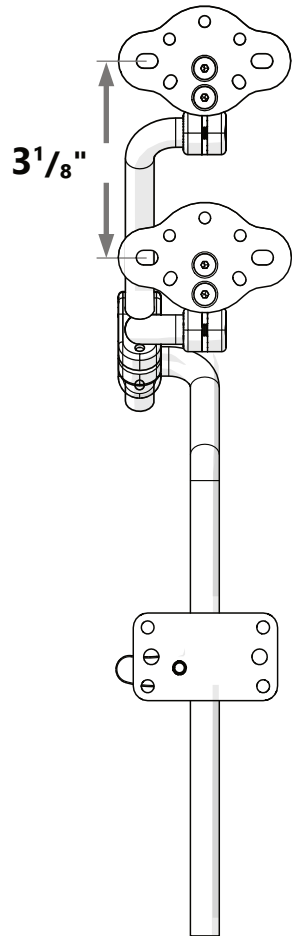
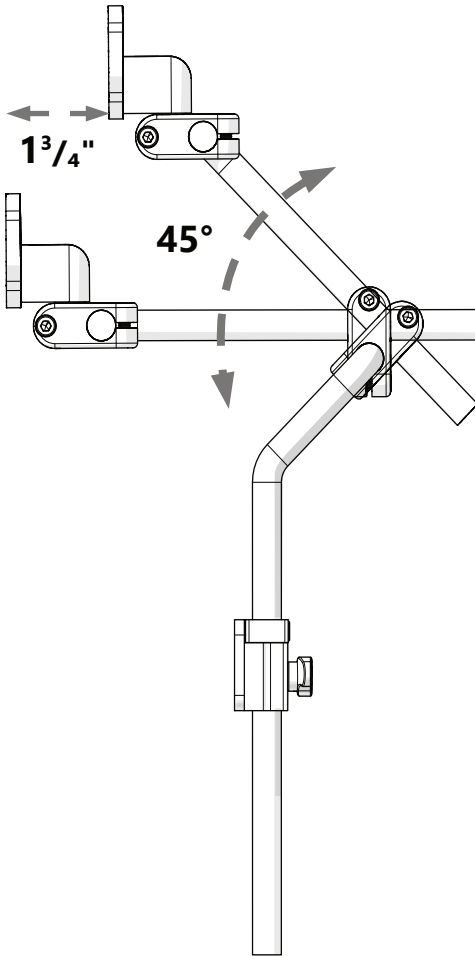
**Step 1:** To adjust the angle of the Adapter Plate (F) on the horizontal bar, loosen the M5 screw (G1) on the bar clamp using the 4mm T-Handle/Allen Wrench.

**Step 2:** Angle the adapter plate assembly parallel with the seat back mount.. Secure the M5 screw on the bar clamp. Refer to the table on page 4 for proper torque specifications.



### NOTICE

If the horizontal bar angle is adjusted, the headrest adapter plate angle must be adjusted in order to mount flush with the headrest it will be mounted to.



### **NOTICE**

The height of the Universal Adapter Plate can move a maximum of 3 1/8" vertically when the angle of the horizontal bar is raised to 45°.

### **NOTICE**

The horizontal bar should be adjusted no more than a maximum of 45°.

### **NOTICE**

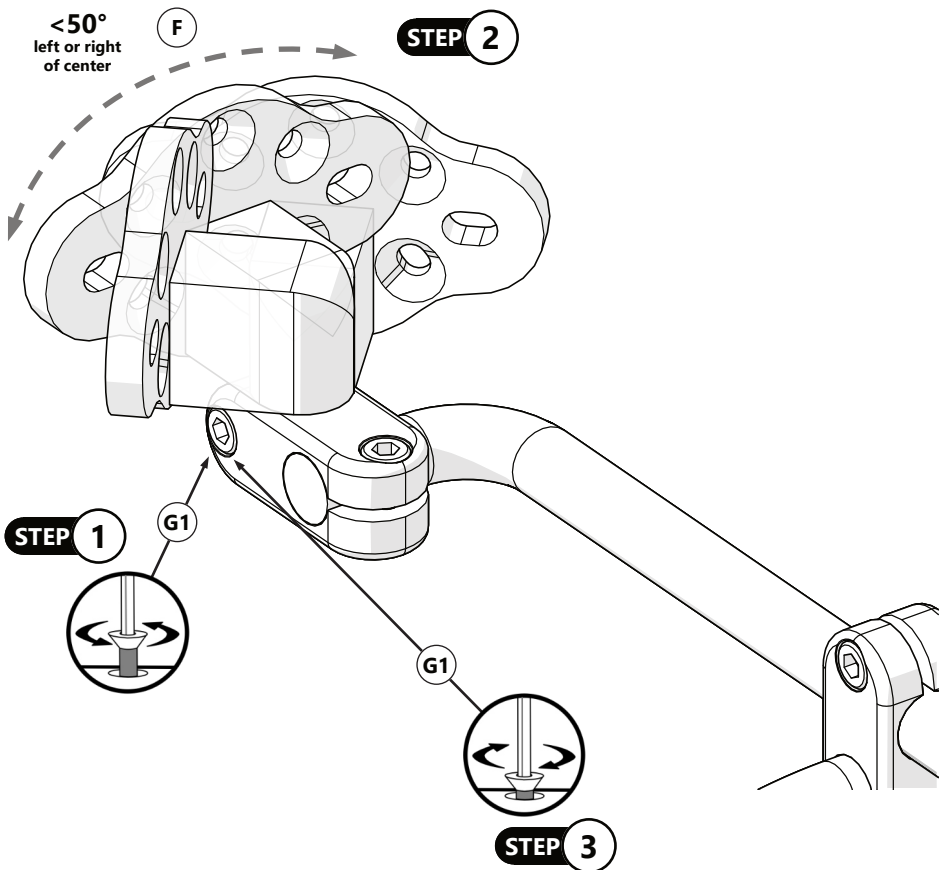
Up to 1 3/4" of depth is added when the horizontal bar is raised to 45°.

## Installation Instructions

### Adapter Plate Adjustment

To adjust the position of the adapter plate and the direction in which it will mount to the headrest, follow the directions below:

- Step 1:** Loosen the M5 screw (G1) on the bar clamp with 4mm T-Handle/Allen Wrench.
- Step 2:** Move the adapter plate (F) in the desired direction.
- Step 3:** When the adjustment is complete, tighten the M5 screw to secure the headrest in position. Refer to the table on page 4 for the proper torque specifications.



#### NOTICE

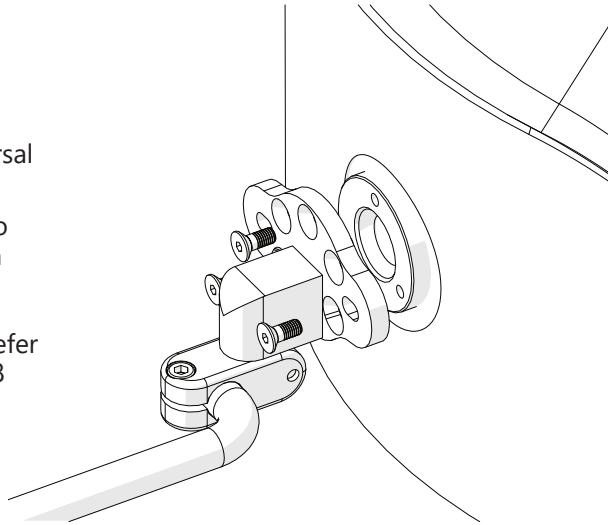
The headrest adapter plate should be angled no more than 50° to the left or right side of the center position.

## Headrest Installation, Option 1

To install the HMO500 hardware onto a 3-hole pattern headrest, follow the steps below:

**Step 1:** Determine the hole pattern required for proper headrest installation. Align the headrest to the universal adapter plate.

**Step 2:** Secure the headrest to the adapter plate with M5 screws. Use the 3mm T-Handle/Allen Wrench to tighten. Refer to the table on page 8 for proper torque specifications.

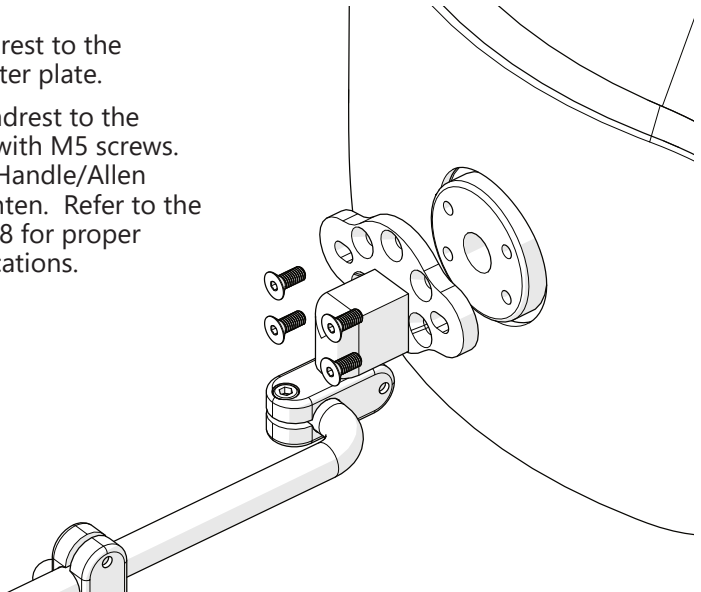


## Headrest Installation, Option 2

To install the HMO500 hardware onto a 4-hole pattern headrest, follow the steps below:

**Step 1:** Align the headrest to the universal adapter plate.

**Step 2:** Secure the headrest to the adapter plate with M5 screws. Use a 3mm T-Handle/Allen Wrench to tighten. Refer to the table on page 8 for proper torque specifications.



### Dealer Assistance

During first time use by the client, it is advised that the dealer or service technician assists and explains the different configurations to the client. If needed, the dealer can make final adjustments.

### User Testing

It is important that the customer is fully aware of the installation and how to adjust the hardware in order for the headrest to be placed in the best position for the user. As a dealer, proceed as follows:

Is the **HMO500** at the proper height for the headrest?

Is the **HMO500** placed at the correct angle?

If needed, adjust the hardware to proper position.

Explain to the client the possible problems and how to address them.

### Conditions of Use

The **HMO500** headrest hardware is intended for use as installed by the dealer, in accordance to the installation and instructions in this manual.

- The foreseen conditions of use are communicated by the dealer or service technician to the user and/or attendant during the first time use.
- If the usage conditions change significantly, please contact your dealer or a qualified service technician to avoid excessive wear and tear or unintended damage.

We recommend that the hardware be checked for wear and function on a periodic basis and replaced, if necessary, by a wheelchair professional.

- Discontinue use after identifying loose or broken components.
- Check and tighten all screws according to the installation instructions.
- Repairs should be done with Stealth parts, fasteners, or items appropriate for the service needed.



### WARNING

Failure to comply with these warnings could result in serious bodily harm.

## Cleaning

- Surfaces may be wiped clean with a damp cloth and mild, non-abrasive cleaner.
- Ensure all cleaners are approved for finished steel, aluminum, plastic and upholstered surfaces.



© 2022, Stealth Products, LLC

**Warranty Information**



**Home Page**



**Online User Manual**

