



**Upper Extremity
Support**



ARMS-ESF3GP

Owner's Manual

General Information

Stealth Products is committed to 100% customer satisfaction. Your complete satisfaction is important to us. Please contact us with feedback or suggestions to help us improve the quality and usability of our products.

You may reach us at:

Stealth Products, LLC

104 John Kelly Drive, Burnet, TX 78611



Phone: (512) 715-9995
Fax: (512) 715-9954

Toll Free: (800) 965-9229
Toll Free: (800) 806-1225

info@stealthproducts.com
www.stealthproducts.com

<div><div>EU</div><div>REP</div></div> <div></div> <div>PRIDE MOBILITY PRODUCTS EUROPE BV De Zwaan 3 1601 MS Enkhuizen The Netherlands</div>	<div><div>CH</div><div>REP</div></div> <div>SODIMED SA Chemin Praz Devant 12 1032 Romanel sur-Lausanne Switzerland</div>	<div>UK Authorized Representative</div> <div></div> <div>PRIDE MOBILITY PRODUCTS LTD. 32 Wedgwood Road, Bicester, Oxfordshire OX26 4UL United Kingdom</div>
--	---	---

General

Read and understand all instructions prior to the use of the product. Failure to adhere to instructions and warnings in this document may result in property damage, injury, or death. Product misuse or failure to follow instructions will void the warranty.

Immediately discontinue use if any function is compromised, if parts are missing or loose, or if any component shows signs of excessive wear. Consult with your supplier for repair, adjustment, or replacement.

All persons responsible for fitting, adjustment, and daily use of the devices discussed in these instructions must be familiar with and understand all safety aspects of the devices mentioned. In order for our products to be used successfully, you must read and understand all instructions and warnings, and maintain our products according to our instructions on care and maintenance.

The installation instructions will guide you through this product's options and possibilities.

Instructions are written with the expressed intent of use with standard configurations. They also contain important safety and maintenance information, as well as describe possible problems that can arise during use. For further assistance, or more advanced applications, please contact **Stealth Products** at (512) 715-9995 or toll free at (800) 965-9229, or your supplier.

Always keep the operating instructions in a safe place so they may be referenced as necessary.

All information, pictures, illustrations, and specifications are based on the product information that was available at the time of printing. Pictures and illustrations shown in these instructions are representative examples and are not intended to be exact depictions of the various parts of the product.



CAUTION

These products are designed to be fitted, applied, and installed exclusively by a healthcare professional trained for these purposes. The fitting, application, and installation by a non-qualified individual could result in serious injury.

Warranty

Our products are designed, manufactured, and produced to the highest of standards. If any defect in material or workmanship is found, **Stealth Products** will repair or replace the product at our discretion. Any implied warranty, including the implied warranties of merchantability and fitness for a particular purpose, shall not extend beyond the duration of this warranty. **Stealth Products** does not warrant damage due to, but not limited to: Misuse, abuse, or misapplication of product, and/or modification of product without written approval from **Stealth Products, LLC**. Any alteration or lack of serial number, where applicable, will automatically void all warranty.

Stealth Products, LLC is liable for replacement parts only. **Stealth Products, LLC** is not liable for any incurred labor costs.

Stealth Products warrants against failure due to defective materials or workmanship:

Covers: 2 years
Hardware: 5 years
Electronics: 3 years

In the event of a product failure covered by our warranty, please follow the procedures outlined below:

1. Call **Stealth Products** at (512) 715-9995 or toll free at (800) 965-9229.
2. Request a Return Authorization (RA) form from the Returns Department and follow the documentation instructions.

You can download additional copies of this manual by accessing the **Stealth** website (<https://stlpro.site/stealth-docs>) and searching "*The World's Best Shoulder Retractors*" in the search bar at the top of the page.

Supplier Reference

Supplier:	
Telephone:	
Address:	
Purchase Date:	
Model:	

Warning Labels

Warnings are included for the safety of the user, client, operator, and property. Please read and understand what the signal words **DANGER**, **WARNING**, **CAUTION**, **NOTICE**, and **SAFETY** mean, and how they could affect the user, those around the user, and property.



DANGER

Identifies an **imminent** situation which, if not avoided, may result in **severe injury, death, and property damage**.



WARNING

Identifies a **potential** situation which, if not avoided, may result in **severe injury, death, and property damage**.



CAUTION

Identifies a **potential** situation which, if not avoided, may result in **minor to moderate injury and property damage**.

NOTICE

Identifies important information not related to injury, but possible **property damage**.

SAFETY

Indicates steps or instructions for safe practices, reminders of safe procedures, or important safety equipment that may be necessary.

Limited Liability

Stealth Products, LLC accepts no liability for personal injury or damage to property that may arise from the failure of the user or other persons to follow the recommendations, warnings, and instructions in this manual.

Stealth Products does not hold responsibility for final integration of final assembly of product to end user. **Stealth Products** is not liable for user death or injury.

Testing

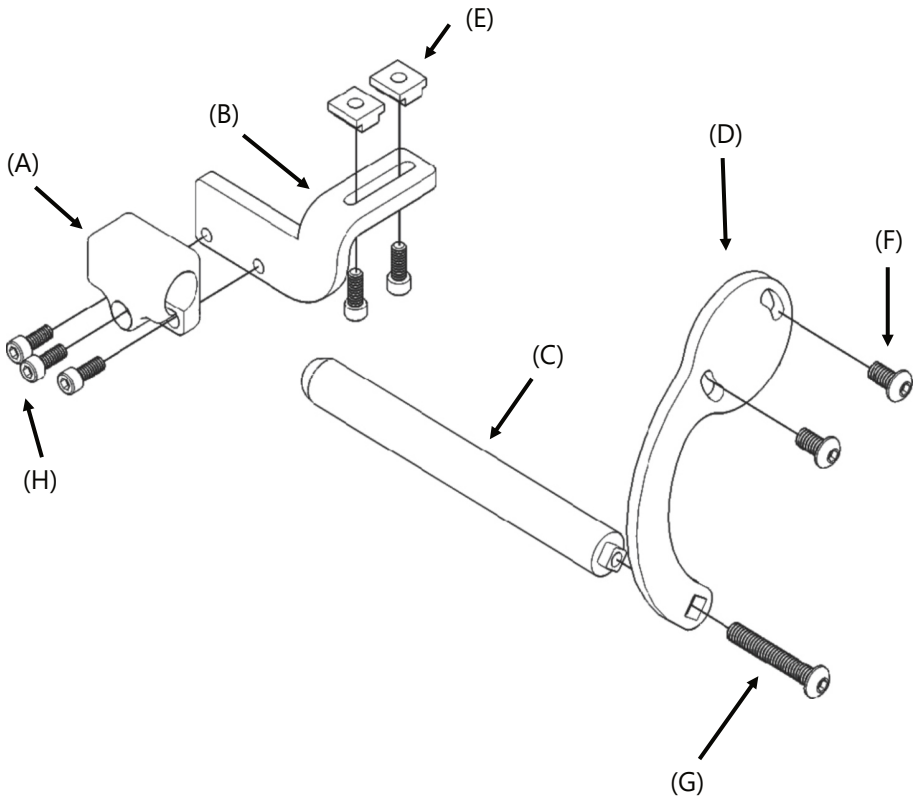
Initial setup and driving should be done in an open area free of obstacles until the user is fully capable of driving safely.

TABLE OF CONTENTS

Customer Satisfaction	1
General Information	1-3
Warranty	2
Supplier Reference Table.....	2
Warning Labels.....	3
Limited Liability	3
Testing	3
Table of Contents	4
Installation	5-6
Parts and Accessories	5
Mounting to the Chair	5
Mounting the Pad	6
Adjusting the Hardware.....	6
Full Surface Contact Mount Option.....	6
First Time Use	7
Dealer Assistance	7
User Testing	7
Conditions of Use	7
Cleaning & Maintenance	8
Notes	9-10

Parts Included

- ARM200-02-Armrest Track Mount Clamp (A)
- ES100-09 Side Mount – Permobil Elbow Stop (B)
- ES100-11 5/8" Rod – Permobil Elbow Stop (C)
- ES100-12 – Positioning Arm, Permobil Elbow Stop (D)
- HMO400-08 #10-32 T-Nut (E)
- 10-32 x 3/8" Button Head Screw (F)
- 1/4-20 x 1/2" Button Head Screw (G)
- 1/4-20x5/8" Socket Head Screw (H)



The ARMS-ESF3GP is our specially designed Fixed Elbow Support that mounts directly to the underside of the armrest on Permobil's Corpus 3G seating system. The hardware is capable of being adjusted on the cane clamp, allowing the support to accommodate various arm lengths and elbow positions.

Mounting the Hardware

The HMO400-08 (10-32 T-Nut) is designed to attach under the armrest.

1. Slide the T-Nuts into the track mount under the armrest..
2. Ensure the hardware is positioned properly and that the pad can be positioned in a way to provide support.
3. The curve on the hardware positioning arm should be curved towards the inside of the chair.

NOTICE

Ensure the threads on the track nuts and screws are clean and clear of debris.

Mounting the Pad

Two 10-32 x 3/8" Button Head Screws are included to mount the pad onto the positioning arm of the hardware.

1. Ensure the elongated end of the pad is on the outside of the arm (if the pad you are mounting is an oblong shape).
2. Once the hardware and pad are in the proper position, tighten the screws to make the hardware rigid to provide best support.

NOTICE

When tightening screws, turn loosely until the screw stops, then tighten one-quarter turn more. Overtightening screws may cause product malfunction and irreversible damage.

Dealer Assistance

During first time use by the client, it is advised that the dealer or service technician assists and explains the configurations to the customer (the user and/or the attendant). If needed, the dealer can make final adjustments.



DANGER

Failure to comply with these warnings could result in serious bodily harm.

User Testing

It is important that the customer is fully aware of the installation, how to use it, and what can be adjusted in order to gain as much mobility as possible. As a dealer, proceed as follows:

- Explain and show the customer how you have executed the installation, and explain the function of every item.

Have the user test The World's Best Shoulder Retractors:

- Is the hardware in the proper position for the client?
- Can the user safely operate the wheelchair with minimal effort?
- Is the placement of the shoulder retractors in an optimal position for the user?

If needed, adjust the shoulder retractors to the proper position.

Explain possible problems to the customer and address solutions to those problems.

Conditions of Use

The World's Best Shoulder Retractors (TWBSHR) are intended for use as installed by the dealer, in accordance with the installation instructions contained in this manual.

- The foreseen conditions of use are communicated by the dealer or service technician to the user and/or attendant during first time use.
- If the usage conditions change significantly, please contact your dealer or qualified service technician to avoid excessive wear and tear or unintended damage.,

Cleaning

- Positioning accessories can be wiped clean with a damp cloth and mild, nonabrasive cleaner.
- Ensure all cleaners are approved for finished steel, aluminum, plastic, and upholstered surfaces.
- To wash cover, remove the cover from the support pad, machine wash in cold water on a delicate cycle and let drip dry.



CAUTION

Do not immerse in water or rinse with a water hose.
Do not coat the metal surface with waxes or silicones.

Maintenance

- Check the hardware for loose or worn parts.
- Check and tighten all fasteners according to the installation instructions.
- Periodically check the elbow support pad for any foam breakdown and/or metal protruding from the foam. This could be potentially dangerous for the client.
-

Disinfecting

When needed, surfaces can be wiped with an approved disinfecting product.

- For fixed covers, take care to notice the cover's fit to the pad so it can be refitted in the correct orientation.
- Zip the cover closed to avoid catching.
- Wash in warm water by hand or machine wash gentle cycle and drip or tumble dry on low heat.

NOTICE

Some covers consist of different materials for the sides and contact surfaces.



CAUTION

Vinyl upholstery should be wiped clean with mild, nonabrasive cleaner only.
Never machine wash vinyl.

[illegible]



© 2020, Stealth Products, LLC



Stealth Products, LLC · info@stealthproducts.com · www.stealthproducts.com
(800) 965-9229 | (512) 715-9995 | 104 John Kelly Drive, Burnet, TX 78611