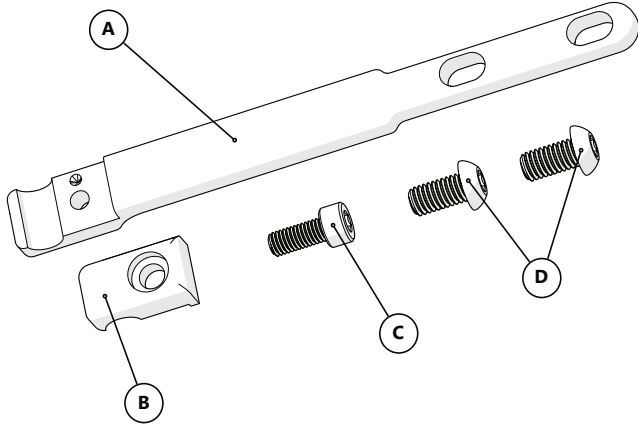


Loc-Line Sip N Puff

Mounting Arm for
Mo-Vis™ Head Control



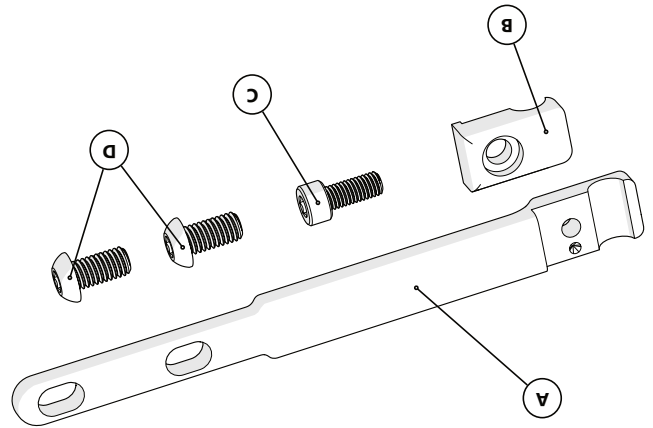
This mounting arm is intended to
mount a Loc-Line Sip N Puff assembly
to a mo-Vis Head Control.

Part	Description	Qty	Torque
A	Mounting Arm	1	N/A
B	Sip N Puff Clamp	1	N/A
C	M5 X 0.8 X 12MM SHS	1	10 N·m
D	M6 X 1 X 12MM BHSN	2	11 N·m

Part	Description	Qty	Torque
A	Mounting Arm	1	N/A
B	Sip N Puff Clamp	1	N/A
C	M5 X 0.8 X 12MM SHS	1	10 N·m
D	M6 X 1 X 12MM BHSN	2	11 N·m

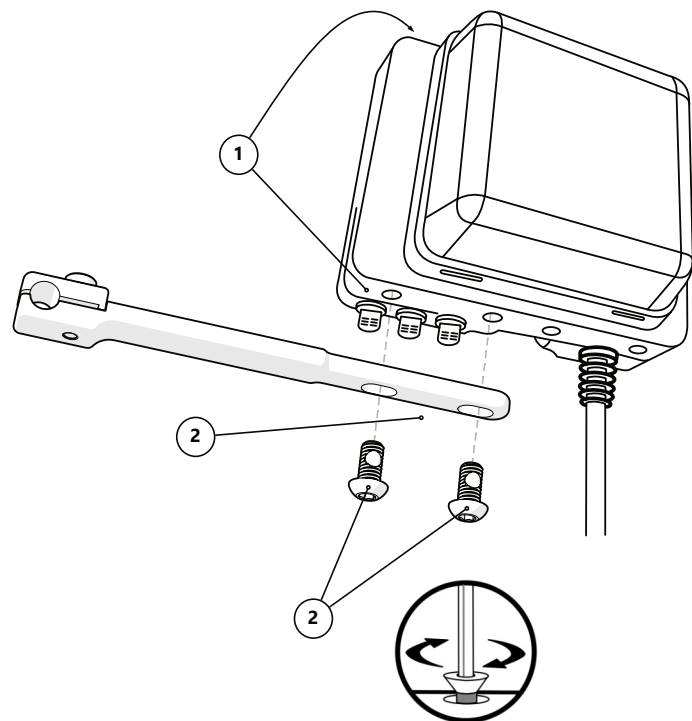
This mounting arm is intended to
mount a Loc-Line Sip n Puff assembly
to a mo-Vis Head Control.

Loc-Line Sip N Puff
Mounting Arm for
Mo-Vis™ Head Control



Installation Instructions

1. The Head Control has a set of two holes at each corner for mounting devices.
2. Line up the holes in the mounting arm (A) with one of the sets of holes corresponding with the desired location of the arm on the Head Control.
3. Secure it in position using the two M6 X 1 X 12MM BHSN (C) and tighten them to the torque value shown on the chart.
4. Continue with the installation of the sip n puff tube as shown in the Sip N Puff Owner's Manual.



P109D852R1

Jul 10, 2025

Jul 10, 2025

P109D852R1

1. The Head Control has a set of two holes at each corner for mounting devices.
2. Line up the holes in the mounting arm (A) with one of the sets of holes corresponding with the desired location of the arm on the Head Control.
3. Secure it in position using the two M6 X 1 X 12MM BHSN (C) and tighten them to the torque value shown on the chart.
4. Continue with the installation of the sip n puff tube as shown in the Sip N Puff Owner's Manual.

